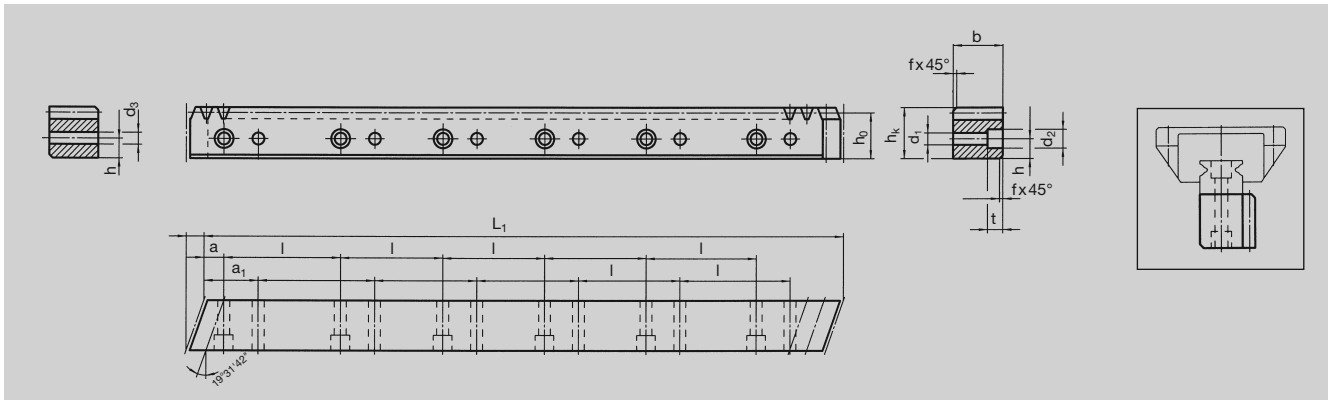




Quality 6 – 90° Version



Order Code	Module	L ₁	L ₂	N° of Teeth	b	h _k	h _o	f	a	l	N° of Holes	h	d ₁	d ₂	t	a ₁	d ₃	kg
49 29 197	2	960	6.70	144	19	19.50	17.50	1	10	60	16	7.5	4.5	7.5	5.3	30	4.5	2.7
49 29 397	2	480	6.70	72	19	19.50	17.50	1	10	60	8	7.5	4.5	7.5	5.3	30	4.5	1.3
49 29 187	2	960	8.50	144	24	24.50	22.50	1	10	60	16	10.0	6.0	9.5	8.5	30	6.0	4.2
49 29 387	2	480	8.50	72	24	24.50	22.50	1	10	60	8	10.0	6.0	9.5	8.5	30	6.0	2.1
49 39 197	3	960	10.30	96	29	29.75	26.75	2	10	60	16	11.5	7.0	11.0	9.0	30	7.0	5.6
49 39 397	3	480	10.30	48	29	29.75	26.75	2	10	60	8	11.5	7.0	11.0	9.0	30	7.0	2.8
49 49 197	4	960	13.83	72	39	39.75	35.75	2	20	80	12	14.0	10.0	15.0	9.0	40	10.0	10.5
49 49 397	4	480	13.83	36	39	39.75	35.75	2	20	80	6	14.0	10.0	15.0	9.0	40	10.0	5.2
49 49 177	4	960	13.83	72	39	48.75	44.75	2	20	80	12	17.0	10.0	15.0	9.0	40	10.0	13.0
49 49 377	4	480	13.83	36	39	48.75	44.75	2	20	80	6	17.0	10.0	15.0	9.0	40	10.0	6.5
49 49 887	4	840	17.38	63	49	58.00	54.00	2	30	105	8	22.5	14.0	20.0	13.0	60	14.0	17.3

Total pitch error: $GT_f/1000 \leq 0.036$ mm

- Teeth induction-hardened and ground
- Material C45
- Ground on all sides after hardening

Mounting racks, see page ZF-2.

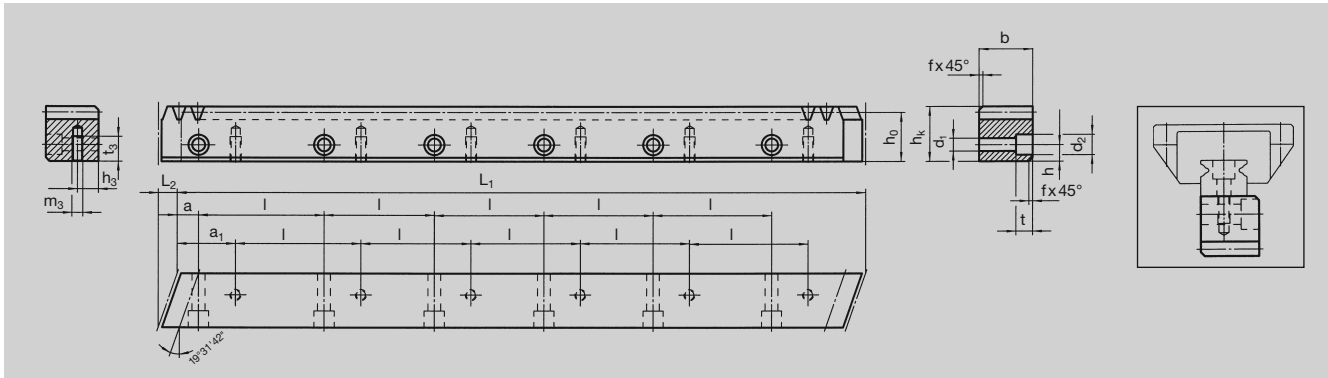
To achieve precision rack joints, we recommend our patented rack assembly kit, see page ZF-4.

For lubrication of racks & pinions, we recommend our automatic lubrication systems, see page ZE-1.

For the calculation and selection of the rack & pinion drive, see page ZD-1.



Quality 6 – 180° Version



Order Code	Module	L ₁	L ₂	N° of Teeth	b	h _k	h _o	f	a	l	N° of Holes	h	d ₁	d ₂	t	a ₁	m ₃	h ₃	t ₃	kg
49 29 107	2	960	6.70	144	19	19.50	17.50	1	10	60	16	7.5	5.8	10	6	30	M4	7.5	8.0	2.7
49 29 117	2	960	8.50	144	24	24.50	22.50	1	10	60	16	10.0	7.0	11	7	30	M5	10.0	11.0	4.2
49 39 107	3	960	10.30	96	29	29.75	26.75	2	10	60	16	11.5	10.0	15	9	30	M6	11.5	13.5	5.6
49 49 107	4	960	13.83	72	39	39.75	35.75	2	20	80	12	14.0	12.0	18	12	40	M8	14.0	16.0	10.5
49 49 127	4	960	13.83	72	39	48.75	44.75	2	20	80	12	17.0	12.0	18	12	40	M8	17.0	16.0	13.0
49 49 807	4	840	17.38	63	49	58.00	54.00	2	30	105	8	22.5	14.0	20	13	60	M12	22.5	25.0	17.3

Total pitch error: $GT_f/1000 \leq 0.036$ mm

- Teeth induction-hardened and ground
- Material C45
- Ground on all sides after hardening

Mounting racks, see page ZF-2.

To achieve precision rack joints, we recommend our patented rack assembly kit, see page ZF-4.

For lubrication of racks & pinions, we recommend our automatic lubrication systems, see page ZE-1.

For the calculation and selection of the rack & pinion drive, see page ZD-1.

