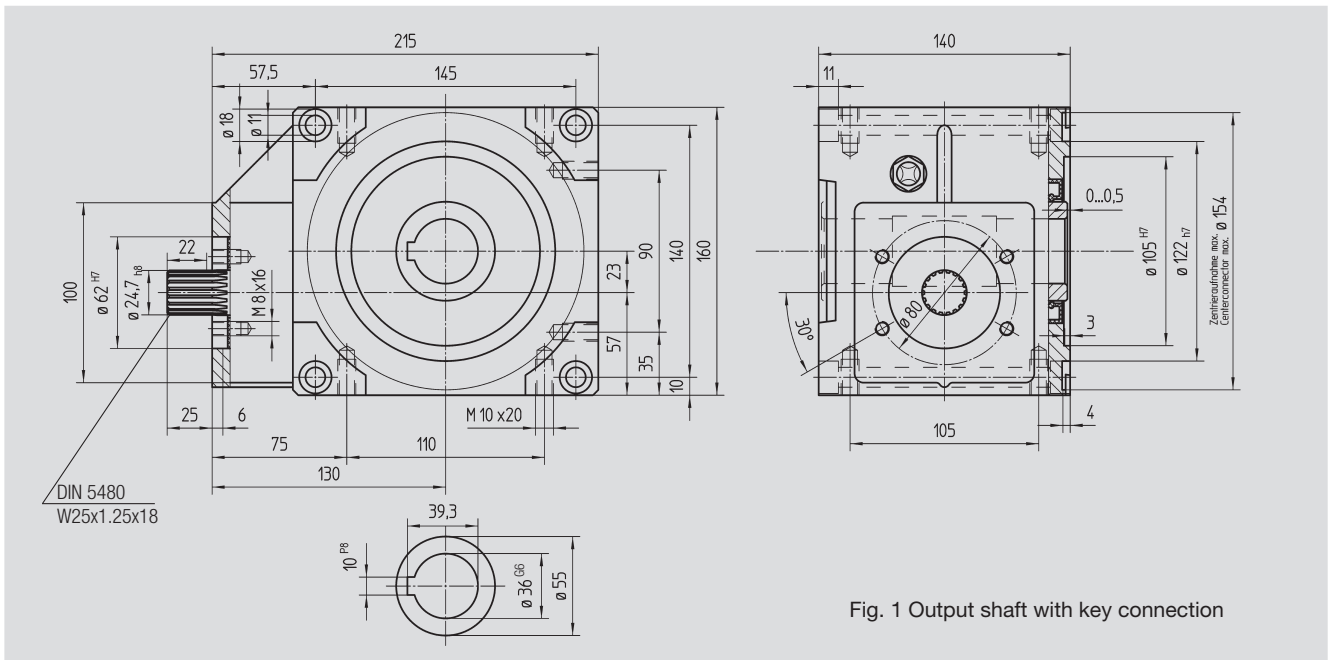




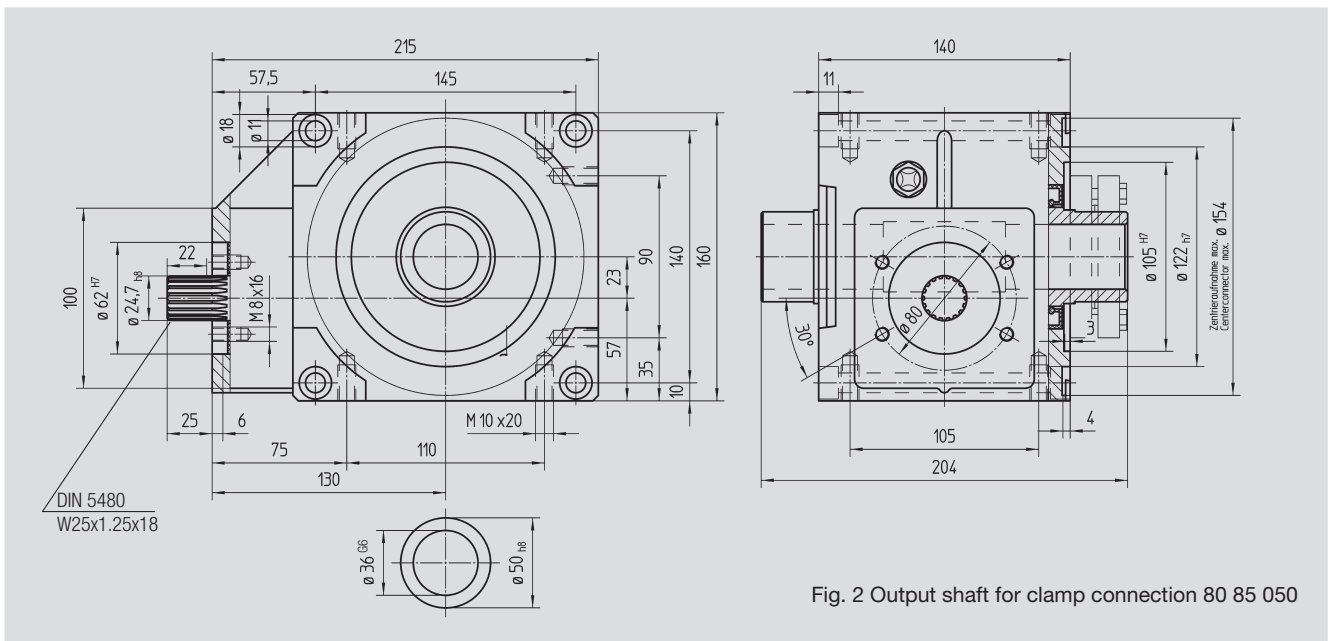
Key Connection Size

BG 63 5 Mounting Surfaces



Shrink-Disk Connection Size

BG 63 5 Mounting Surfaces

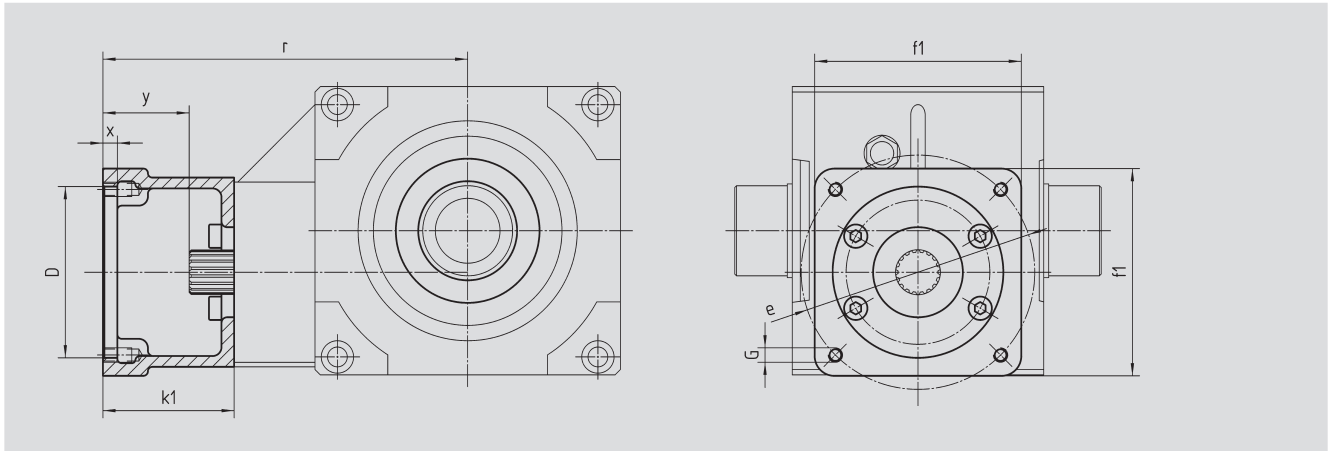


Order Code	Order Code	Ratio i	kg	$J_{red} \cdot 10^{-4}$ kg m ²
Key Connection	Shrink-Disk Connection			
51 04 005	51 14 005	4.75	11.8	3.234
51 04 007	51 14 007	6.75	11.8	2.148
51 04 009	51 14 009	9.25	11.7	1.595



**Motor Flange
Size**

BG 63



Size 63 mm

Order Code	D ^{G7}	k ₁	r	x	y	f ₁	e	G	kg
65 59 301	95.0	62	192	6	37	100	115	M8	1.0
65 59 302	50.0	62	192	6	37	100	95	M6	1.0
65 59 303	80.0	62	192	6	37	100	100	M6	1.0
65 59 304	95.0	78	208	6	53	115	130	M8	1.0
65 59 305	95.0	72	202	5	47	105	115	M8	1.0
65 59 306	60.0	74	204	7	49	100	75, 90	M5	1.0
65 59 307	70.0	70	200	7	45	100	90	M6	1.0
65 59 401	95.0	73	203	7	48	100	115	M8	1.0
65 59 402	110.0	78	208	7	53	115	130	M8	1.0
65 59 403	95.0	73	203	7	48	115	130	M8	1.0
65 59 404	110.0	73	203	7	48	115	130	M8	1.0
65 59 405	95.0	78	208	7	53	140	165	M10	1.0
65 59 406	110.0	78	208	7	53	140	165	M10	1.0
65 59 407	130.0	78	208	7	53	140	165	M10	1.0
65 59 409	130.0	98	228	7	73	140	165	M10	1.5
65 59 410	110.0	74	204	7	49	120	145	M8	1.0
65 59 411	110.0	84	214	7	59	120	145	M8	1.5
65 59 412	114.3	105	235	7	80	180	200	M12	3.5
65 59 413	114.3	139	269	7	114	180	200	M12	6.0
65 59 414	114.3	91	221	7	66	180	200	M12	2.5
65 59 415	110.0	89	219	7	64	120	145	M8	1.5

The order should contain gear box 51 04 0xx / 51 14 0xx and flange 65 59 3xx or 4xx.