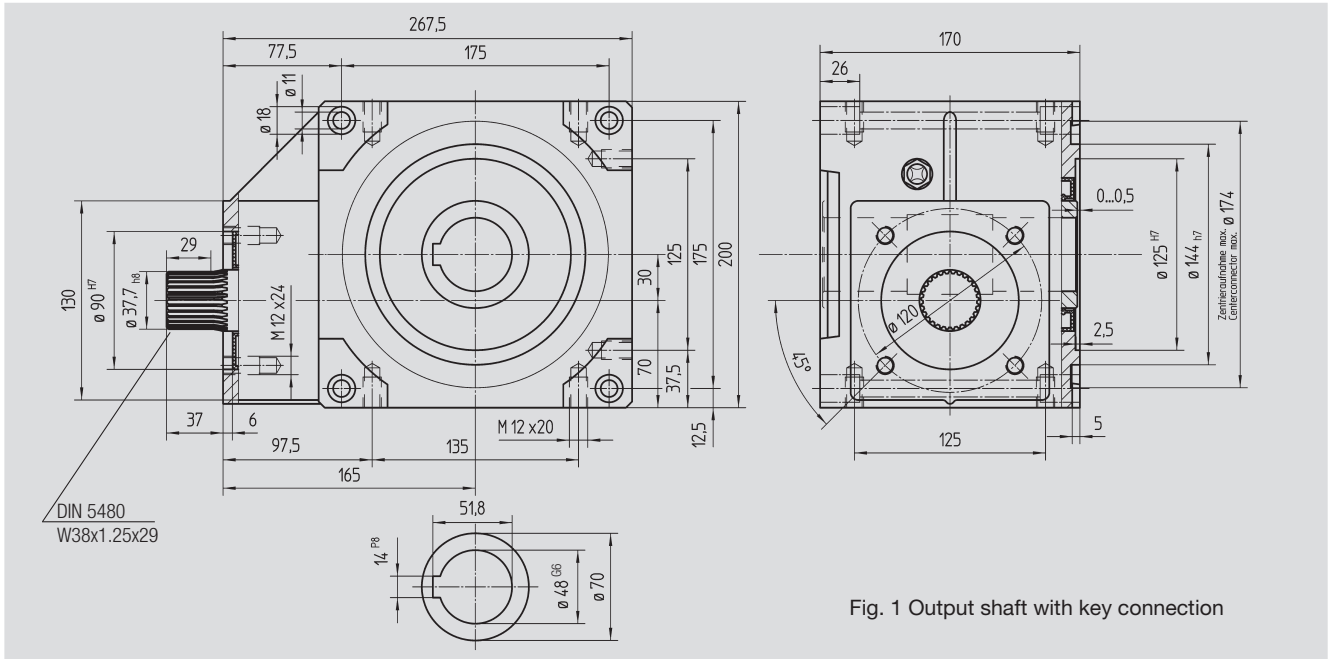




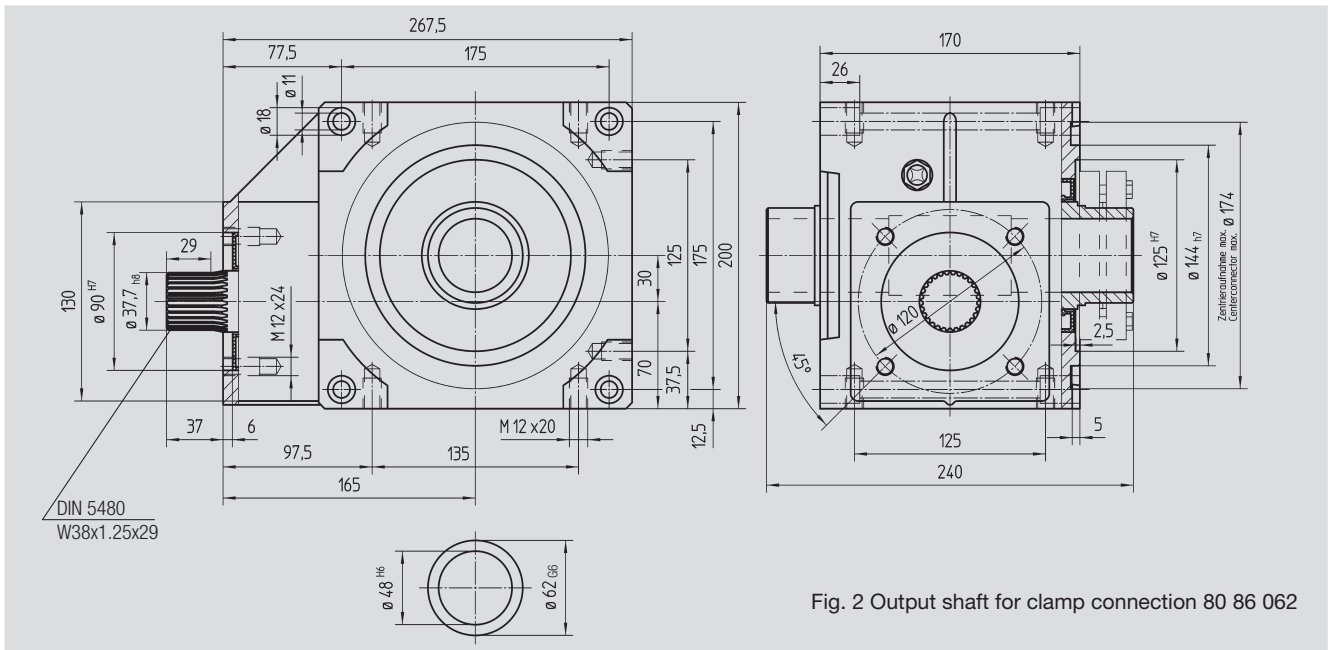
**Key Connection
Size**


BG 80 5 Mounting Surfaces



**Shrink-Disk Connection
Size**

BG 80 5 Mounting Surfaces

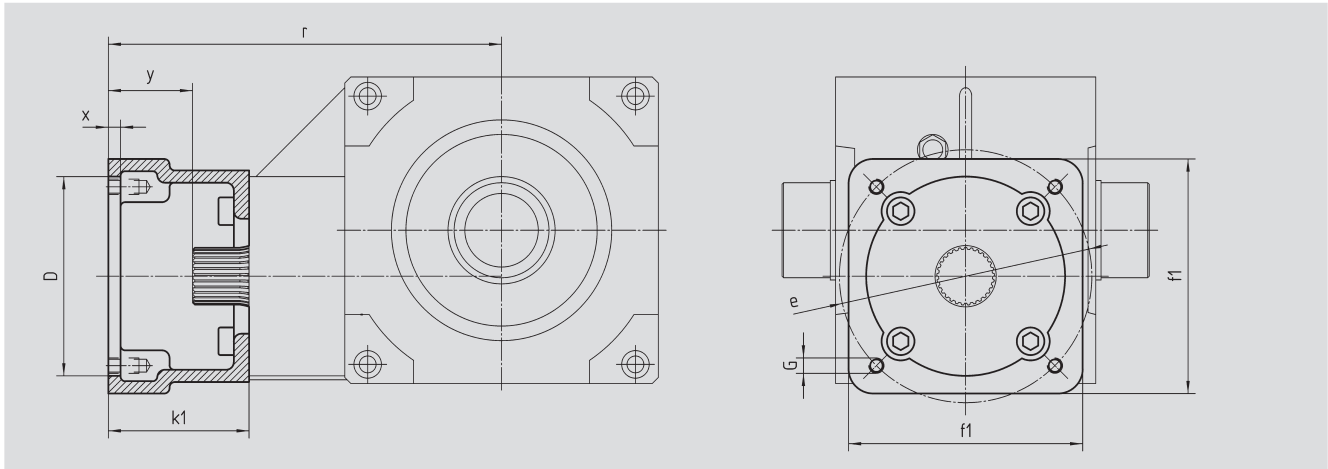


Order Code	Order Code	Ratio i		$J_{red} 10^{-4}$ kg m ²
Key Connection	Shrink-Disk Connection			
51 05 005	51 15 005	4.75	23.0	14.04
51 05 007	51 15 007	6.75	23.0	10.25
51 05 009	51 15 009	9.25	23.0	8.51




**Motor Flange
Size**

BG 80



Size 80 mm

Order Code	D ^{G7}	k ₁	r	x	y	f ₁	e	G	 kg
65 59 501	110.0	92.0	257.0	7	55.0	153	165	M10	2.0
65 59 502	130.0	92.0	257.0	7	55.0	153	165	M10	3.0
65 59 503	180.0	122.0	287.0	7	85.0	192	215	M12	3.5
65 59 504	180.0	127.0	292.0	7	90.0	192	215	M12	3.5
65 59 505	180.0	112.0	277.0	7	75.0	192	215	M12	3.0
65 59 506	130.0	112.0	277.0	7	75.0	192	215	M12	3.0
65 59 507	130.0	112.0	277.0	7	75.0	155	165	M10	4.5
65 59 508	110.0	90.0	255.0	7	53.0	130	145	M8	2.0
65 59 509	110.0	108.5	273.5	7	71.5	130	145	M8	2.5
65 59 510	114.3	129.5	294.5	7	92.5	180	200	M12	5.5
65 59 511	114.3	163.5	328.5	7	126.5	180	200	M12	8.0
65 59 512	114.3	105.5	270.5	7	68.5	180	200	M12	4.0
65 59 513	110.0	113.5	278.5	7	76.5	130	145	M8	2.5

The order should contain gear box 51 05 0xx / 51 15 0xx and flange 65 59 5xx.