



Center Distance

$a_o = 80 \text{ mm}$

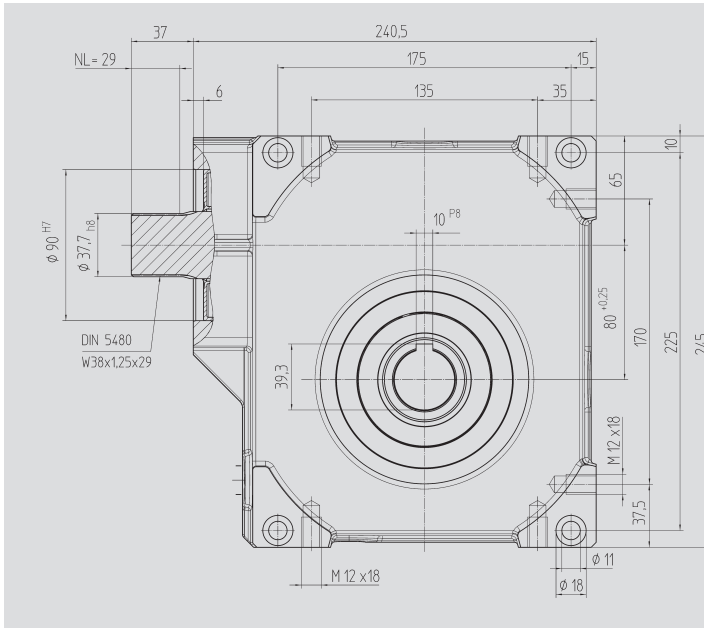


Fig. 1 Output shaft with key connection

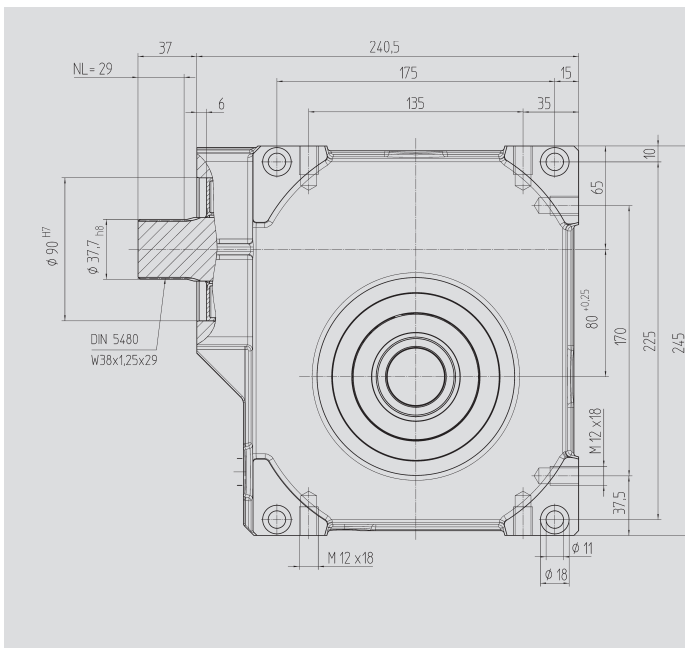
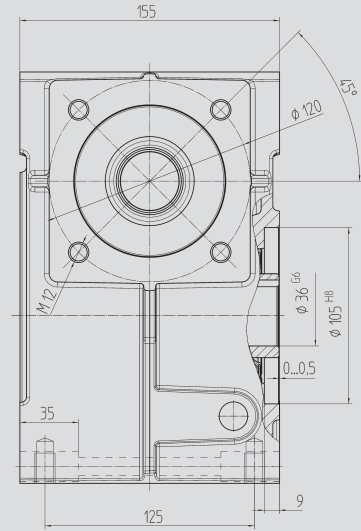
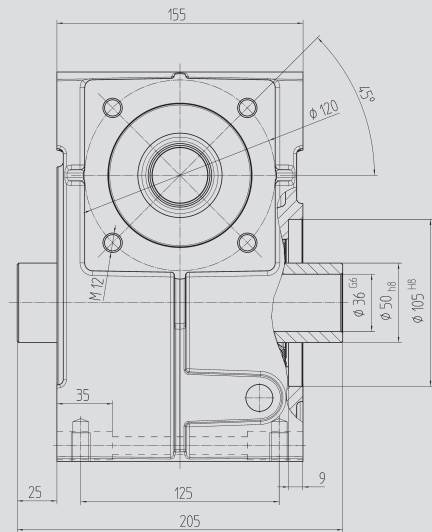


Fig. 2 Output shaft for clamp connection 80 85 150

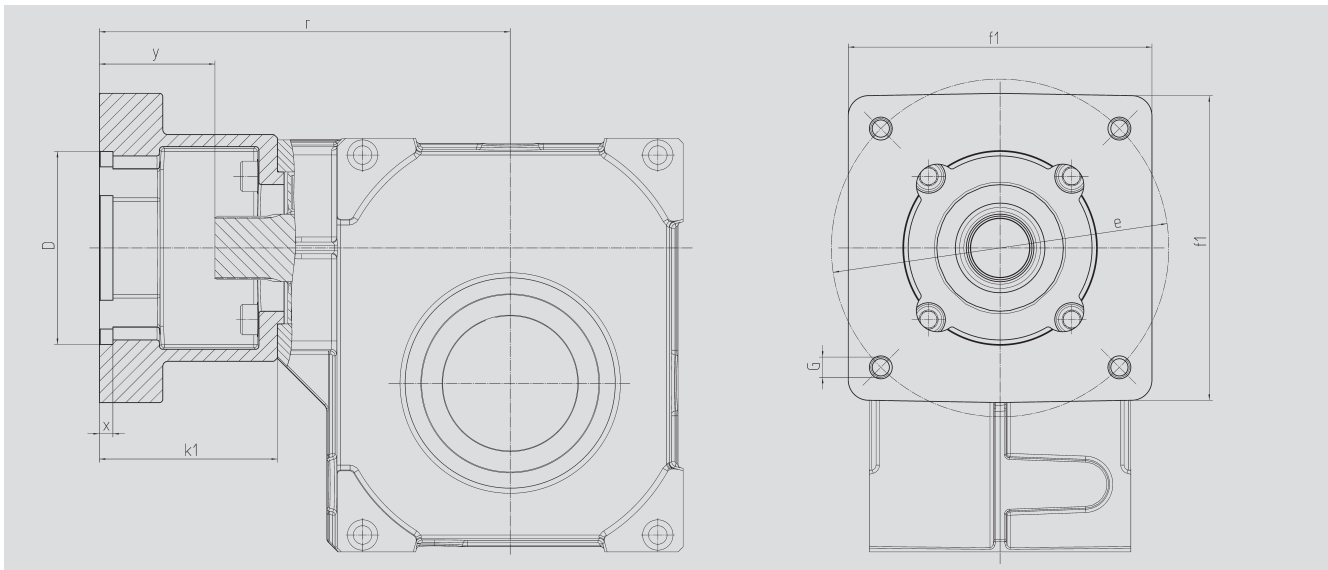


Order Code Fig. 1	Fig. 2	Ratio i	kg	$J_{red} 10^{-4}$ kg m <sup>2</sup>
59 05 005	59 15 005	4.75	22	9.6180
59 05 007	59 15 007	6.75	22	6.0910
59 05 009	59 15 009	9.25	22	4.7650
59 05 015	59 15 015	14.50	22	5.3080
59 05 020	59 15 020	19.50	22	3.9350
59 05 029	59 15 029	29.00	22	4.0500
59 05 039	59 15 039	39.00	22	4.1800
59 05 052	59 15 052	52.00	22	3.7140

With food grade oil, order code 59 05 1xx / 59 15 1xx



**Motor Flange**



**Center Distance**

**$a_o = 80 \text{ mm}$**

Order Code	D <sup>G7</sup>	k <sub>1</sub>	r	x	y	f <sub>1</sub>	e	G	kg
65 59 501	110.0	92.0	230.0	8.0	55.0	140	165	M10	2.00
65 59 502	130.0	92.0	230.0	8.0	55.0	140	165	M10	1.90
65 59 503	180.0	122.0	260.0	8.0	85.0	192	215	M12	3.40
65 59 504	180.0	127.0	265.0	8.0	90.0	192	215	M12	3.80
65 59 505	180.0	112.0	250.0	10.0	75.0	192	215	M12	2.70
65 59 506	130.0	112.0	250.0	10.0	75.0	192	215	M12	3.00
65 59 507	130.0	112.0	250.0	10.0	75.0	140	165	M10	2.50
65 59 508	110.0	90.0	228.0	8.0	53.0	140	145	M8	2.00
65 59 509	110.0	108.5	246.5	8.0	71.5	140	145	M8	2.50
65 59 510	114.3	129.5	267.5	8.0	92.5	180	200	M12	5.00
65 59 511	114.3	163.5	301.5	8.0	126.5	180	200	M12	4.20
65 59 512	114.3	105.5	243.5	8.0	68.5	180	200	M12	3.50
65 59 513	110.0	113.5	251.5	8.0	76.5	140	145	M8	2.70

The order should contain gear box 59 05 0xx / 59 15 0xx and flange 65 59 5xx.