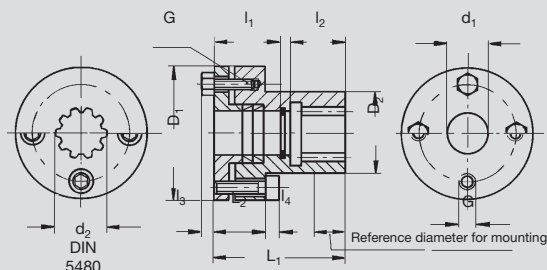




### Special Couplings for Motor/Gear Units, rigid model, nitrided, preassembled for motor shafts without key



Bore on gear unit side  
low-clearance tooth-hub  
profile corresponding to  
DIN 5480 for push-fitting



Bore on motor side with  
locking elements as clamp  
connection

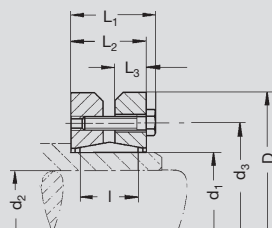
#### Order Code

Coupling	1)	d <sub>1</sub>	d <sub>2</sub>	D <sub>1</sub>	D <sub>2</sub>	l <sub>1</sub>	l <sub>2</sub>	l <sub>3</sub>	l <sub>4</sub>	L <sub>1</sub>	L <sub>2</sub>	G	J <sub>red</sub> 10 <sup>-4</sup> kg m <sup>2</sup>	kg
65 43 110	9 71 80 010	10	15x1.25x10	48	29	22	17	-	5	44	18	4xM5	0.835	0.40
65 43 111	9 71 80 011	11	15x1.25x10	48	29	20.5	17	-	5	64	18	4xM5	0.976	0.50
65 43 114	9 71 80 014	14	15x1.25x10	48	29	24	19	-	5	50	18	4xM5	0.835	0.45
65 43 116	9 71 80 016	16	15x1.25x10	48	29	27	16	-	5	50	18	4xM5	0.824	0.45
65 43 119	9 71 80 019	19	15x1.25x10	48	29	24	16	-	5	40	18	4xM5	0.799	0.40
65 43 914	9 71 80 014	14	15x1.25x10	48	29	26	19	-	5	64	18	4xM5	0.985	0.50
65 43 916	9 71 80 016	16	15x1.25x10	48	29	27	15	-	5	64.3	18.3	4xM5	0.975	0.40
65 43 919	9 71 80 019	19	15x1.25x10	48	29	23	17	-	5	55	18	4xM5	0.853	0.45
65 43 924	9 71 80 024	24	15x1.25x10	50	29	34	22	-	6	56	40	4xM6	1.041	0.52
65 44 024	9 71 80 024	24	25x1.25x18	50	29	41.5	24	-	6	66.5	59.5	4xM6	2.628	0.75
65 44 114	9 71 80 014	14	25x1.25x18	55	32	24	23.5	-	6	64	21	4xM6	1.645	0.50
65 44 116	9 71 80 016	16	25x1.25x18	55	32	34	23.5	-	6	64	21	4xM6	1.622	0.50
65 44 119	9 71 80 019	19	25x1.25x18	55	32	33	26.5	-	6	63	21	4xM6	1.598	0.50
65 44 120	9 71 80 020	20	25x1.25x18	55	32	33.2	26.5	-	6	63	21	4xM6	1.550	0.50
65 44 219	9 71 80 019	19	25x1.25x18	55	32	27	26.5	-	6	74	21	4xM6	1.703	0.50
65 44 919	9 71 80 019	19	25x1.25x18	55	32	31	26.5	-	6	78	21	4xM6	1.757	0.55
65 44 928	9 71 80 028	28	25x1.25x18	70	48	48	26	-	6	83	25	5xM6	5.998	0.85
65 44 932	9 71 80 032	32	25x1.25x18	70	48	43	23	-	6	78	25	5xM6	5.921	0.80
65 44 935	9 71 81 035	35	25x1.25x18	70	48	52	26	-	6	78	25	5xM6	6.155	0.95
65 46 024	9 71 80 024	24	38x1.25x29	55	-	38.5	31	4	6	72.5	-	5xM6	4.452	0.90
65 46 834	9 71 81 035	1 3/8"	38x1.25x29	80	58	63	34	-	6	100	40	6xM6	16.320	1.95
65 46 928	9 71 80 028	28	38x1.25x29	70	48	47	34	-	6	90	25	5xM6	5.882	0.90
65 46 932	9 71 80 032	32	38x1.25x29	70	48	43	34	-	6	86	25	5xM6	5.784	0.85
65 46 935	9 71 81 035	35	38x1.25x29	80	58	65	34	-	6	100	40	6xM6	16.550	1.95
65 46 938	9 71 80 038	38	38x1.25x29	80	58	62	34	-	6	100	40	6xM6	16.240	1.88
65 47 948	9 71 80 048	48	38x1.25x29	95	66	58	31	-	8	92	42	6xM8	41.860	3.10

1) Spare part clamping element

### Shrink-Disk Clamping Sets for Output Drive Shafts of gear series 58 1. ...

Supplied as  
complete set



$$J_{red} = \frac{J}{i^2}$$

Order Code	a <sub>0</sub> mm	T <sub>2,max</sub> Nm	d <sub>1</sub>	d <sub>2</sub>	d <sub>3</sub>	D	L <sub>1</sub>	L <sub>2</sub>	L <sub>3</sub>	l	G	J 10 <sup>-4</sup> kg m <sup>2</sup>	kg
80 83 030	50	400	30	25	44	60	25.0	21.50	9	16	7 x M5	1.756	0.3
80 84 036	63	540	36	28	52	72	27.5	23.50	10	18	5 x M6	4.029	0.4
80 85 050	80	1180	50	36	70	90	31.5	27.50	12	22	9 x M6	11.322	0.8
80 86 062	100	2300	62	48	86	110	34.5	30.50	13	23	10 x M6	27.137	1.3
80 87 080	125	3240	80	60	100	145	38.0	32.50	14	25	7 x M8	88.870	1.9