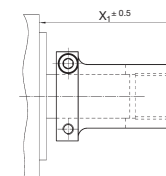




## Servo-Motor Mounting Guide for HT and HP Servo-Worm Gear Units

The pairing of servo-motors to servo-worm reducers only considers the servo shaft and flange dimensions; the servo-motor performance with the reducer must also be checked, as well as the individual application requirements.



\* Coupling to stop

### Center Distance 50

Motor Sizes						Gearbox							
Shaft-Ø	Shaft Length	Pilot-Ø	Max. Length of Pilot	Bolt Circle	Fixing Screw	Coupling	Add. Flange	Motor Flange	HT-Servo EN ISO 9409	Gearbox Clamp Connection	HP-Servo Key Way	Gearbox Clamp Connection	Dimension for Coupling x1
10	32	80	6	100	M6	65 43 110		65 59 303	98 03 0xx	98 13 0xx	58 03 0xx	58 13 0xx	*
11	23	60	6	75	M8	65 43 111		65 59 306	98 03 0xx	98 13 0xx	58 03 0xx	58 13 0xx	*
11	23	60	6	90	M5	65 43 111	265 23 085	65 59 301	98 03 0xx	98 13 0xx	58 03 0xx	58 13 0xx	68
11	23	60	6	90	M5	65 43 111	265 23 085	65 59 301	98 03 0xx	98 13 0xx	58 03 0xx	58 13 0xx	*
11	25	60	4	75	M8	65 43 111		65 59 306	98 03 0xx	98 13 0xx	58 03 0xx	58 13 0xx	*
11	30	50	6	70	M4	65 43 111	265 23 084	65 59 301	98 03 0xx	98 13 0xx	58 03 0xx	58 13 0xx	*
11	30	80	4	100	M6	65 43 111	265 24 108	65 59 303	98 03 0xx	98 13 0xx	58 03 0xx	58 13 0xx	*
14	30	50	6	70	M5	65 43 914	265 23 087	65 59 301	98 03 0xx	98 13 0xx	58 03 0xx	58 13 0xx	*
14	30	50	4	95	M6	65 43 114		65 59 302	98 03 0xx	98 13 0xx	58 03 0xx	58 13 0xx	*
14	30	60	6	75	M8	65 43 914		65 59 306	98 03 0xx	98 13 0xx	58 03 0xx	58 13 0xx	*
14	30	70	4	90	M5	65 43 914	265 23 086	65 59 301	98 03 0xx	98 13 0xx	58 03 0xx	58 03 0xx	72
14	30	70	3.5	90	M6	65 43 914	265 23 096	65 59 301	98 03 0xx	98 13 0xx	58 03 0xx	58 13 0xx	*
14	30	80	6	100	M6	65 43 114		65 59 303	98 03 0xx	98 13 0xx	58 03 0xx	58 13 0xx	*
14	30	95	6	115	M8	65 43 114		65 59 301	98 03 0xx	98 13 0xx	58 03 0xx	58 13 0xx	*
16	40	60	6	75	M8	65 43 116		65 59 306	98 03 0xx	98 13 0xx	58 03 0xx	58 13 0xx	68
16	40	95	6	115	M8	65 43 116		65 59 301	98 03 0xx	98 13 0xx	58 03 0xx	58 13 0xx	*
16	40	70	6	90	M6	65 43 116	265 23 096	65 59 301	98 03 0xx	98 13 0xx	58 03 0xx	58 13 0xx	66
16	40	110	4	145	M8	65 43 916	265 23 081	65 59 305			58 03 0xx	58 13 0xx	*
16	43	95	4	115	M8	65 43 116	265 23 099	65 59 301	98 03 0xx	98 13 0xx	58 03 0xx	58 13 0xx	*
16	43	95	4	115	M8	65 43 116	265 23 099	65 59 305			58 03 0xx	58 13 0xx	*
19	35	70	6	90	M6	65 43 919	265 23 096	65 59 301	98 03 0xx	98 13 0xx	58 03 0xx	58 13 0xx	*
19	40	70	6	90	M5	65 43 919	265 23 086	65 59 301	98 03 0xx	98 13 0xx	58 03 0xx	58 13 0xx	*
19	40	80	6	100	M6	65 43 119		65 59 303	98 03 0xx	98 13 0xx	58 03 0xx	58 13 0xx	*
19	40	95	6	115	M8	65 43 119		65 59 301	98 03 0xx	98 13 0xx	58 03 0xx	58 13 0xx	*
19	40	95	6	130	M8	65 43 919		65 59 304	98 03 0xx	98 13 0xx	58 03 0xx	58 13 0xx	*
19	40	95	6	130	M8	65 43 919		65 59 304	98 03 0xx	98 13 0xx	58 03 0xx	58 13 0xx	*
19	40	95	6	115	M8	65 43 919	265 21 096	65 59 306	98 03 0xx	98 13 0xx	58 03 0xx	58 13 0xx	80
19	40	110	6	130	M8	65 43 919		65 59 402	98 03 0xx	98 13 0xx	58 03 0xx	58 13 0xx	*
19	50	95	6	115	M8	65 43 119		65 59 305			58 03 0xx	58 13 0xx	*
19	50	110	6	145	M8	65 43 119	265 23 095	65 59 301	98 03 0xx	98 13 0xx	58 03 0xx	58 13 0xx	*
19	55	80	6	100	M6	65 43 919	265 24 089	65 59 304	98 03 0xx	98 13 0xx	58 03 0xx	58 13 0xx	87
19	55	95	4	115	M8	65 43 119	265 23 088	65 59 301	98 03 0xx	98 13 0xx	58 03 0xx	58 13 0xx	*
24	50	95	3	115	M8	65 43 924	265 24 091	65 59 305	98 03 0xx	98 13 0xx	58 03 0xx	58 13 0xx	*
24	55	110	6	145	M8	65 43 924	265 24 084	65 59 301	98 03 0xx	98 13 0xx	58 03 0xx	58 13 0xx	82





**ATLANTA**

**Servo-Motor Mounting Guide for HT and HP Servo-Worm Gear Units**

Further information see next page.

\* Coupling to stop

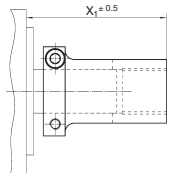
**Center Distance 63**

Motor Sizes						Gearbox							
Shaft-Ø	Shaft Length	Pilot-Ø	Max. Length of Pilot	Bolt Circle	Fixing Screw	Coupling	Add. Flange	Motor Flange	HT-Servo EN ISO 9409	Gearbox Clamp Connection	HP-Servo Key Way	Gearbox Clamp Connection	Dimension for Coupling x1
14	30	50	6	70	M5	535 72 075	265 23 087	65 59 401	98 04 0xx	98 14 0xx	58 04 0xx	58 14 0xx	*
14	30	50	6	95	M6	65 44 114	265 23 096	65 59 404	98 04 0xx	98 14 0xx	58 04 0xx	58 14 0xx	60
14	30	60	4	75	M5	535 72 075	265 23 094	65 59 401	98 04 0xx	98 14 0xx	58 04 0xx	58 14 0xx	*
14	30	80	6	100	M6	535 72 075	265 24 089	65 59 403	98 04 0xx	98 14 0xx	58 04 0xx	58 14 0xx	*
14	30	95	4	115	M8	65 44 114		65 59 401	98 04 0xx	98 14 0xx	58 04 0xx	58 14 0xx	*
19	28	130	4	165	M10	65 44 219		65 59 407	98 04 0xx	98 14 0xx	58 04 0xx	58 14 0xx	*
19	35	70	6	90	M6	65 44 219	265 23 096	65 59 401	98 04 0xx	98 14 0xx	58 04 0xx	58 14 0xx	*
19	37.5	95	4	100	M8	65 44 119		65 59 401	98 04 0xx	98 14 0xx	58 04 0xx	58 14 0xx	*
19	40	70	6	90	M6	65 44 119	265 23 096	65 59 401	98 04 0xx	98 14 0xx	58 04 0xx	58 14 0xx	72.5
19	40	80	6	100	M6	65 44 919	265 24 089	65 59 403	98 04 0xx	98 14 0xx	58 04 0xx	58 14 0xx	*
19	40	95	4	115	M8	65 44 119		65 59 401	98 04 0xx	98 14 0xx	58 04 0xx	58 14 0xx	*
19	40	95	4	130	M8	65 44 119		65 59 403	98 04 0xx	98 14 0xx	58 04 0xx	58 14 0xx	*
19	40	110	4	130	M8	65 44 119		65 59 404	98 04 0xx	98 14 0xx	58 04 0xx	58 14 0xx	*
19	40	110	6	145	M8	65 44 919	265 24 093	65 59 401	98 04 0xx	98 14 0xx	58 04 0xx	58 14 0xx	*
19	40	130	4	165	M10	65 44 119		65 59 407	98 04 0xx	98 14 0xx	58 04 0xx	58 14 0xx	*
19	40	110	5	215	M12	65 44 919	265 25 099	65 59 406	98 04 0xx	98 14 0xx	58 04 0xx	58 14 0xx	*
19	46	130	4	165	M10	65 44 119		65 59 407	98 04 0xx	98 14 0xx	58 04 0xx	58 14 0xx	*
19	50	110	6	145	M8	65 44 119	265 24 093	65 59 401	98 04 0xx	98 14 0xx	58 04 0xx	58 14 0xx	84
19	55	95	4	115	M8	65 44 119	265 23 088	65 59 401	98 04 0xx	98 14 0xx	58 04 0xx	58 14 0xx	*
19	58	110	6	145	M8	65 44 119	265 24 093	65 59 401	98 04 0xx	98 14 0xx	58 04 0xx	58 14 0xx	88
22	53.5	130	4	165	M10	581 24 001		65 59 409	98 04 0xx	98 14 0xx	58 04 0xx	58 14 0xx	91
22	55	110	6	145	M8	581 24 001	265 24 093	65 59 401	98 04 0xx	98 14 0xx	58 04 0xx	58 14 0xx	90
22	58	110	6	145	M8	581 24 001	265 24 093	65 59 401	98 04 0xx	98 14 0xx	58 04 0xx	58 14 0xx	97
24	50	95	3	115	M8	65 44 024	265 24 091	65 59 401	98 04 0xx	98 14 0xx	58 04 0xx	58 14 0xx	*
24	50	110	5	130	M8	65 44 024		65 59 402	98 04 0xx	98 14 0xx	58 04 0xx	58 14 0xx	*
24	50	110	5	165	M10	65 44 024		65 59 406	98 04 0xx	98 14 0xx	58 04 0xx	58 14 0xx	*
24	50	130	4	165	M10	65 44 024		65 59 407	98 04 0xx	98 14 0xx	58 04 0xx	58 14 0xx	*
24	55	110	6	145	M8	65 44 024	265 24 093	65 59 401	98 04 0xx	98 14 0xx	58 04 0xx	58 14 0xx	85
28	58	130	4	165	M10	65 44 928		65 59 409	98 04 0xx	98 14 0xx	58 04 0xx	58 14 0xx	*
28	60	130	4	165	M10	65 44 928		65 59 409	98 04 0xx	98 14 0xx	58 04 0xx	58 14 0xx	*
32	50	130	4	165	M10	65 44 932		65 59 409	98 04 0xx	98 14 0xx	58 04 0xx	58 14 0xx	*
32	58	130	4	165	M10	65 44 932		65 59 409	98 04 0xx	98 14 0xx	58 04 0xx	58 14 0xx	*
32	58	130	5	215	M12	65 44 932	265 25 099	65 59 406	98 04 0xx	98 14 0xx	58 04 0xx	58 14 0xx	*
32	58	180	6	215	M12	65 44 932	265 26 098	65 59 406	98 04 0xx	98 14 0xx	58 04 0xx	58 14 0xx	105
32	60	130	5	215	M12	65 44 932	265 25 099	65 59 406	98 04 0xx	98 14 0xx	58 04 0xx	58 14 0xx	*
32	60	180	6	215	M12	65 44 932	265 26 098	65 59 406	98 04 0xx	98 14 0xx	58 04 0xx	58 14 0xx	105
35	79	114.3	4	200	M12	65 44 935	265 26 089	65 59 406	98 04 0xx	98 14 0xx	58 04 0xx	58 14 0xx	*
35	80	114.3	4	200	M12	65 44 935	265 26 088	65 59 406	98 04 0xx	98 14 0xx	58 04 0xx	58 14 0xx	110



## Servo-Motor Mounting Guide for HT and HP Servo-Worm Gear Units

The pairing of servo-motors to servo-worm reducers only considers the servo shaft and flange dimensions; the servo-motor performance with the reducer must also be checked, as well as the individual application requirements.



\* Coupling to stop

### Center Distance 80

Motor Sizes						Gearbox							
Shaft-Ø	Shaft Length	Pilot-Ø	Max. Length of Pilot	Bolt Circle	Fixing Screw	Coupling	Add. Flange	Motor Flange	HT-Servo EN ISO 9409	Gearbox Clamp Connection	HP-Servo Key Way	Gearbox Clamp Connection	Dimension for Coupling x1
19	40	70	3	90	M6	581 20 002	265 25 104	65 59 501	98 05 0xx	98 15 0xx	58 05 0xx	58 15 0xx	*
19	40	80	4	100	M6	581 20 002	265 25 094	65 59 501	98 05 0xx	98 15 0xx	58 05 0xx	58 15 0xx	*
19	40	95	6	115	M8	581 20 002	265 25 092	65 59 501	98 05 0xx	98 15 0xx	58 05 0xx	58 15 0xx	*
19	40	95	6	130	M8	581 20 002	265 25 093	65 59 501	98 05 0xx	98 15 0xx	58 05 0xx	58 15 0xx	*
19	40	110	4	130	M8	581 20 002	265 25 090	65 59 501	98 05 0xx	98 15 0xx	58 05 0xx	58 15 0xx	*
19	46	130	5	165	M10	581 20 002		65 59 507	98 05 0xx	98 15 0xx	58 05 0xx	58 15 0xx	*
19	55	95	6	115	M8	581 20 002	265 24 099	65 59 507	98 05 0xx	98 15 0xx	58 05 0xx	58 15 0xx	*
22	53.5	130	5	165	M10	528 44 005		65 59 507	98 05 0xx	98 15 0xx	58 05 0xx	58 15 0xx	*
22	55	110	6	145	M8	502 27 047	265 25 081	65 59 505	98 05 0xx	98 15 0xx	58 05 0xx	58 15 0xx	117
22	58	110	6	145	M8	502 27 047	265 25 081	65 59 505	98 05 0xx	98 15 0xx	58 05 0xx	58 15 0xx	117
24	40	110	6	165	M10	65 46 024		65 59 501	98 05 0xx	98 15 0xx	58 05 0xx	58 15 0xx	82
24	50	110	6	165	M10	65 46 024		65 59 501	98 05 0xx	98 15 0xx	58 05 0xx	58 15 0xx	*
24	50	130	4	165	M10	65 46 024		65 59 502	98 05 0xx	98 15 0xx	58 05 0xx	58 15 0xx	*
28	42	180	5	215	M12	65 46 928		65 59 505	98 05 0xx	98 15 0xx	58 05 0xx	58 15 0xx	*
28	58	130	5	165	M10	65 46 928		65 59 507	98 05 0xx	98 05 0xx	58 05 0xx	58 15 0xx	*
28	58	180	5	215	M12	65 46 928		65 59 505	98 05 0xx	98 15 0xx	58 05 0xx	58 15 0xx	*
28	60	180	5	215	M12	65 46 928		65 59 505	98 05 0xx	98 15 0xx	58 05 0xx	58 15 0xx	*
32	50	130	5	165	M10	65 46 932		65 59 507	98 05 0xx	98 15 0xx	58 05 0xx	58 15 0xx	103
32	58	130	5	165	M10	65 46 932		65 59 507	98 05 0xx	98 15 0xx	58 05 0xx	58 15 0xx	*
32	58	130	5	215	M12	65 46 932		65 59 506	98 05 0xx	98 15 0xx	58 05 0xx	58 15 0xx	*
32	58	180	5	215	M12	65 46 932		65 59 505	98 05 0xx	98 15 0xx	58 05 0xx	58 15 0xx	*
32	60	130	5	215	M12	65 46 932		65 59 506	98 05 0xx	98 15 0xx	58 05 0xx	58 15 0xx	*
32	60	180	5	215	M12	65 46 932		65 59 505	98 05 0xx	98 15 0xx	58 05 0xx	58 15 0xx	*
35	79-80	114.3	4	200	M12	65 46 935	265 26 089	65 59 501	98 05 0xx	98 15 0xx	58 05 0xx	58 15 0xx	*
38	80	180	5	215	M12	65 46 938		65 59 504	98 05 0xx	98 15 0xx	58 05 0xx	58 15 0xx	*
42	110	250	6	300	M16	505 33 019	265 27 028	65 59 504	98 05 0xx	98 15 0xx	58 05 0xx	58 15 0xx	149

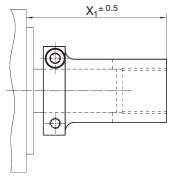




# ATLANTA

## Servo-Motor Mounting Guide for HT and HP Servo-Worm Gear Units

The pairing of servo-motors to servo-worm reducers only considers the servo shaft and flange dimensions; the servo-motor performance with the reducer must also be checked, as well as the individual application requirements.



\* Coupling to stop

### Center Distance 100

Shaft-Ø	Shaft Length	Motor Sizes				Fixing Screw	Coupling	Add. Flange	Motor Flange	Gearbox				Dimension for Coupling x1
		Pilot-Ø	Max. Length of Pilot	Bolt Circle						HT-Servo Gearbox EN ISO 9409	Clamp Connection	HP-Servo Gearbox Key Way	Clamp Connection	
19	40	80	5	100	M6	502 27 026	265 25 109	65 59 501	98 06 0xx	98 16 0xx	58 06 0xx	98 16 0xx	97	
19	40	95	6	115	M8	581 20 002	265 25 092	65 59 501	98 06 0xx	98 16 0xx	58 06 0xx	58 16 0xx	*	
19	40	95	6	130	M8	581 20 002	265 25 093	65 59 501	98 06 0xx	98 16 0xx	58 06 0xx	58 16 0xx	*	
19	40	110	4	130	M8	581 20 002	265 25 090	65 59 501	98 06 0xx	98 16 0xx	58 06 0xx	58 16 0xx	*	
19	58	110	6	145	M8	535 72 058	265 25 081	65 59 505	98 06 0xx	98 16 0xx	58 06 0xx	58 16 0xx	*	
24	40	110	4	165	M10	65 46 024		65 59 501	98 06 0xx	98 16 0xx	58 06 0xx	58 16 0xx	82	
24	50	110	6	165	M10	65 46 024		65 59 501	98 06 0xx	98 16 0xx	58 06 0xx	58 16 0xx	*	
24	50	130	4	165	M10	65 46 024		65 59 502	98 06 0xx	98 16 0xx	58 06 0xx	58 16 0xx	*	
28	58	180	4	215	M12	65 46 928		65 59 505	98 06 0xx	98 16 0xx	58 06 0xx	58 16 0xx	*	
28	60	130	4	165	M10	65 46 928		65 59 507	98 06 0xx	98 16 0xx	58 06 0xx	58 16 0xx	*	
28	60	180	4	215	M12	65 46 928		65 59 505	98 06 0xx	98 16 0xx	58 06 0xx	58 16 0xx	*	
32	50	130	4	165	M10	65 46 932		65 59 507	98 06 0xx	98 16 0xx	58 06 0xx	58 16 0xx	100	
32	58	130	4	165	M10	65 46 932		65 59 507	98 06 0xx	98 16 0xx	58 06 0xx	58 16 0xx	*	
32	58	130	4	215	M12	65 46 932		65 59 506	98 06 0xx	98 16 0xx	58 06 0xx	58 16 0xx	*	
32	58	180	4	215	M12	65 46 932		65 59 505	98 06 0xx	98 16 0xx	58 06 0xx	58 16 0xx	*	
32	60	130	4	215	M12	65 46 932		65 59 506	98 06 0xx	98 16 0xx	58 06 0xx	58 16 0xx	*	
32	60	180	4	215	M12	65 46 932		65 59 505	98 06 0xx	98 16 0xx	58 06 0xx	58 16 0xx	*	
35	79-80	114.3	4	200	M12	65 46 935	265 26 089	65 59 501	98 06 0xx	98 16 0xx	58 06 0xx	58 16 0xx	*	
38	80	180	6	215	M12	65 46 938		65 59 504	98 06 0xx	98 16 0xx	58 06 0xx	58 16 0xx	*	
42	110	250	6	300	M16	505 33 019	265 27 028	65 59 504	98 06 0xx	98 16 0xx	58 06 0xx	58 16 0xx	149	

### Center Distance 125

28	60	180	6	215	M12	65 46 928					58 47 0xx	58 87 0xx	*
32	60	180	6	215	M12	65 46 932					58 47 0xx	58 87 0xx	*
38	80	180	6	215	M12	65 46 938					58 47 1xx	58 87 1xx	*
48	58	180	6	215	M12	65 47 948					58 47 0xx	58 87 0xx	*
48	80 - 85	180	6	215	M12	65 47 948					58 47 1xx	58 87 1xx	*