



**gerade verzahnt**, Verzahnung gefräst, 20° Eingriffswinkel  
**Straight tooth system**, milled teeth, 20° transverse pressure angle

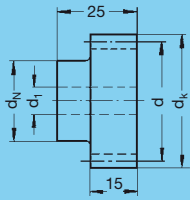


Bild / Fig. 1

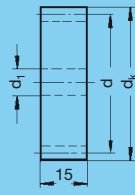


Bild / Fig. 2

weich / soft	
C45, 1.0503	Kunststoff POM Plastic POM
Verz.-Qual. Gearing grade	Verz.-Qual. Gearing grade
<b>8 e 25</b>	<b>9 bc 26</b>

Bestell-Nummer Order code		Bild Fig.	Zähnezahl N° of teeth z	d	d <sub>k</sub>	d <sub>1</sub>	d <sub>N</sub>	d <sub>3</sub>	s	 Stahl Steel	 Kunststoff Plastic
21 10 012	22 10 012	1	12	12,0	14,0	6	9	–	–	0,01	2,0
21 10 013	22 10 013	1	13	13,0	15,0	6	9	–	–	0,01	2,5
21 10 014	22 10 014	1	14	14,0	16,0	6	11	–	–	0,02	3,0
21 10 015	22 10 015	1	15	15,0	17,0	6	12	–	–	0,02	4,0
21 10 016	22 10 016	1	16	16,0	18,0	6	12	–	–	0,03	4,5
21 10 017	22 10 017	1	17	17,0	19,0	6	14	–	–	0,03	5,0
21 10 018	22 10 018	1	18	18,0	20,0	6	15	–	–	0,04	6,0
21 10 019	22 10 019	1	19	19,0	21,0	6	15	–	–	0,04	8,0
21 10 020	22 10 020	1	20	20,0	22,0	6	16	–	–	0,05	10,0
21 10 021	22 10 021	1	21	21,0	23,0	6	16	–	–	0,05	12,0
21 10 022	22 10 022	1	22	22,0	24,0	6	18	–	–	0,06	14,0
21 10 023	22 10 023	1	23	23,0	25,0	6	18	–	–	0,06	15,0
21 10 024	22 10 024	1	24	24,0	26,0	9	20	–	–	0,07	17,0
21 10 025	22 10 025	1	25	25,0	27,0	9	20	–	–	0,07	20,0
21 10 030	22 10 030	1	30	30,0	32,0	9	20	–	–	0,10	25,0
21 10 035	22 10 035	1	35	35,0	37,0	9	25	–	–	0,14	28,0
21 10 038	22 10 038	1	38	38,0	40,0	9	25	–	–	0,17	32,0
21 10 040	22 10 040	1	40	40,0	42,0	9	25	–	–	0,18	35,0
21 10 045	22 10 045	1	45	45,0	47,0	9	30	–	–	0,25	45,0
21 10 048	22 10 048	1	48	48,0	50,0	9	30	–	–	0,26	48,0
21 10 050	22 10 050	1	50	50,0	52,0	9	30	–	–	0,28	50,0
21 10 057	22 10 057	1	57	57,0	59,0	9	40	–	–	0,37	68,0
21 10 060	22 10 060	1	60	60,0	62,0	9	40	–	–	0,40	75,0
23 10 076	–	2	76	76,0	78,0	10	–	–	–	0,55	–
23 10 080	–	2	80	80,0	82,0	10	–	–	–	0,60	–
23 10 095	–	2	95	95,0	97,0	10	–	–	–	0,85	–
23 10 100	–	2	100	100,0	102,0	10	–	–	–	0,95	–
23 10 114	–	2	114	114,0	116,0	10	–	–	–	1,20	–

Eine Weiterbearbeitung (Bohrung ausdrehen, nuten, Gewinde anbringen etc.) ist kurzfristig möglich.  
Further finishing (turning bores, keywaying, threading, etc.) is possible within short time.





**gerade verzahnt**, Verzahnung gefräst, 20° Eingriffswinkel  
**Straight tooth system**, milled teeth, 20° transverse pressure angle

**Bild / Fig. 1**

**Bild / Fig. 2**

**Bild / Fig. 3**

weich / soft		
C45, 1.0503	GG20 0.6020	Kunststoff POM Plastic POM
Verz.-Qual. Gearing grade	Verz.-Qual. Gearing grade	Verz.-Qual. Gearing grade
<b>8 e 25</b>	<b>8 e 26</b>	<b>9 bc 26</b>

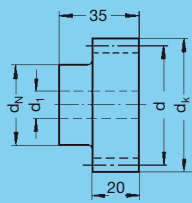
Stahl Steel	Bestell-Nummer Order code		Bild Fig.	Zähnezahl N° of teeth z	d	dk	d <sub>1</sub>	d <sub>N</sub>	d <sub>3</sub>	s	kg		
	Grauguss Grey cast iron	Kunststoff Plastic									Stahl Steel	Grauguss Grey cast iron	Kunststoff Plastic
21 15 012	-	22 15 012	1	12	18,0	21,0	6	14	-	-	0,03	-	5,5
21 15 013	-	22 15 013	1	13	19,5	22,5	6	14	-	-	0,03	-	5,5
21 15 014	-	22 15 014	1	14	21,0	24,0	6	16	-	-	0,04	-	7,0
21 15 015	-	22 15 015	1	15	22,5	25,5	6	18	-	-	0,05	-	9,0
21 15 016	-	22 15 016	1	16	24,0	27,0	6	18	-	-	0,07	-	12,5
21 15 017	-	22 15 017	1	17	25,5	28,5	9	20	-	-	0,08	-	14,5
21 15 018	-	22 15 018	1	18	27,0	30,0	9	20	-	-	0,09	-	16,0
21 15 019	-	22 15 019	1	19	28,5	31,5	9	20	-	-	0,10	-	18,0
21 15 020	-	22 15 020	1	20	30,0	33,0	9	25	-	-	0,13	-	23,5
21 15 021	-	22 15 021	1	21	31,5	34,5	9	25	-	-	0,14	-	25,5
21 15 022	-	22 15 022	1	22	33,0	36,0	9	25	-	-	0,15	-	27,0
21 15 023	-	22 15 023	1	23	34,5	37,5	9	25	-	-	0,16	-	29,0
21 15 024	-	22 15 024	1	24	36,0	39,0	9	25	-	-	0,17	-	31,0
21 15 025	-	22 15 025	1	25	37,5	40,5	9	25	-	-	0,18	-	32,5
21 15 030	-	22 15 030	1	30	45,0	48,0	9	30	-	-	0,23	-	42,0
21 15 035	-	22 15 035	1	35	52,5	55,5	9	40	-	-	0,40	-	49,0
21 15 038	-	22 15 038	1	38	57,0	60,0	9	40	-	-	0,40	-	73,0
21 15 040	-	22 15 040	1	40	60,0	63,0	9	40	-	-	0,46	-	83,5
21 15 045	-	22 15 045	1	45	67,5	70,5	12	50	-	-	0,61	-	111,0
21 15 048	-	22 15 048	1	48	72,0	75,0	12	50	-	-	0,70	-	127,0
21 15 050	-	22 15 050	1	50	75,0	78,0	12	50	-	-	0,75	-	136,0
21 15 057	-	22 15 057	1	57	85,5	88,5	12	60	-	-	1,00	-	182,0
21 15 060	-	22 15 060	1	60	90,0	93,0	12	60	-	-	1,16	-	211,0
23 15 076	-	-	2	76	114,0	117,0	16	-	-	-	1,40	-	-
23 15 080	-	-	2	80	120,0	123,0	16	-	-	-	1,50	-	-
23 15 595	-	-	2	95	142,5	145,5	20	-	-	-	2,10	-	-
-	23 15 095	-	3	95	142,5	145,5	16	70	114	6,0	-	2,00	-
-	23 15 100	-	3	100	150,0	153,0	16	70	122	6,0	-	2,30	-
-	23 15 114	-	3	114	171,0	174,0	16	70	146	6,5	-	2,50	-

Eine Weiterbearbeitung (Bohrung ausdrehen, nuten, Gewinde anbringen etc.) ist kurzfristig möglich.  
Further finishing (turning bores, keywaying, threading, etc.) is possible within short time.

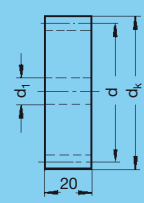




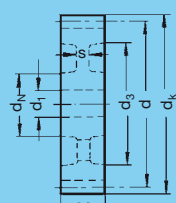
**gerade verzahnt**, Verzahnung gefräst, 20° Eingriffswinkel  
**Straight tooth system**, milled teeth, 20° transverse pressure angle



**Bild / Fig. 1**



**Bild / Fig. 2**



**Bild / Fig. 3**

**weich / soft**

C45, 1.0503	GG20 0.6020	Kunststoff POM Plastic POM
Verz.-Qual. Gearing grade	Verz.-Qual. Gearing grade	Verz.-Qual. Gearing grade
<b>8 e 25</b>	<b>8 e 26</b>	<b>9 bc 26</b>

Stahl Steel	Bestell-Nummer Order code		Bild Fig.	Zähnezahl N° of teeth z	d	d <sub>k</sub>	d <sub>1</sub>	d <sub>N</sub>	d <sub>3</sub>	s	kg		
	Grauguss Grey cast iron	Kunststoff Plastic									Stahl Steel	Grauguss Grey cast iron	Kunststoff Plastic
21 20 012	-	22 20 012	1	12	24,0	28,0	9	18,0	-	-	0,07	-	15
21 20 013	-	22 20 013	1	13	26,0	30,0	9	19,0	-	-	0,12	-	18
21 20 014	-	22 20 014	1	14	28,0	32,0	9	19,0	-	-	0,14	-	20
21 20 015	-	22 20 015	1	15	30,0	34,0	9	24,5	-	-	0,15	-	21
21 20 016	-	22 20 016	1	16	32,0	36,0	9	25,0	-	-	0,17	-	23
21 20 017	-	22 20 017	1	17	34,0	38,0	9	25,0	-	-	0,18	-	32
21 20 018	-	22 20 018	1	18	36,0	40,0	9	25,0	-	-	0,19	-	36
21 20 019	-	22 20 019	1	19	38,0	42,0	9	25,0	-	-	0,20	-	39
21 20 020	-	22 20 020	1	20	40,0	44,0	9	30,0	-	-	0,22	-	47
21 20 021	-	22 20 021	1	21	42,0	46,0	9	30,0	-	-	0,26	-	51
21 20 022	-	22 20 022	1	22	44,0	48,0	9	30,0	-	-	0,27	-	55
21 20 023	-	22 20 023	1	23	46,0	50,0	9	30,0	-	-	0,28	-	59
21 20 024	-	22 20 024	1	24	48,0	52,0	12	35,0	-	-	0,36	-	65
21 20 025	-	22 20 025	1	25	50,0	54,0	12	35,0	-	-	0,39	-	70
21 20 028	-	-	1	28	56,0	60,0	12	40,0	-	-	0,45	-	-
21 20 030	-	22 20 030	1	30	60,0	64,0	12	40,0	-	-	0,50	-	105
21 20 032	-	-	1	32	64,0	68,0	12	40,0	-	-	0,60	-	-
21 20 035	-	-	1	35	70,0	74,0	12	50,0	-	-	0,67	-	-
21 20 036	-	-	1	36	72,0	76,0	12	50,0	-	-	0,85	-	-
21 20 038	-	-	1	38	76,0	80,0	12	50,0	-	-	0,90	-	-
21 20 040	-	-	1	40	80,0	84,0	12	50,0	-	-	0,95	-	-
21 20 045	-	-	1	45	90,0	94,0	12	60,0	-	-	1,25	-	-
21 20 048	-	-	1	48	96,0	100,0	15	70,0	-	-	1,50	-	-
21 20 050	-	-	1	50	100,0	104,0	15	70,0	-	-	1,60	-	-
21 20 056	-	-	1	56	112,0	116,0	15	70,0	-	-	1,90	-	-
21 20 057	-	-	1	57	114,0	118,0	15	70,0	-	-	2,00	-	-
21 20 060	-	-	1	60	120,0	124,0	15	70,0	-	-	2,40	-	-
23 20 576	-	-	2	76	152,0	156,0	20	-	-	-	2,80	-	-
23 20 580	-	-	2	80	160,0	164,0	20	-	-	-	3,10	-	-
23 20 595	-	-	2	95	190,0	194,0	20	-	-	-	4,40	-	-
-	23 20 076	-	3	76	152,0	156,0	16	70,0	126	7,5	-	1,80	-
-	23 20 080	-	3	80	160,0	164,0	16	70,0	134	7,5	-	1,90	-
-	23 20 095	-	3	95	190,0	194,0	16	80,0	164	7,5	-	2,20	-
-	23 20 100	-	3	100	200,0	204,0	16	80,0	174	7,5	-	2,50	-
-	23 20 114	-	3	114	228,0	232,0	16	80,0	200	7,5	-	2,70	-

Eine Weiterbearbeitung (Bohrung ausdrehen, nuten, Gewinde anbringen etc.) ist kurzfristig möglich.  
Further finishing (turning bores, keywaying, threading, etc.) is possible within short time.





**gerade verzahnt**, Verzahnung gefräst, 20° Eingriffswinkel  
**Straight tooth system**, milled teeth, 20° transverse pressure angle

**Bild / Fig. 1**

**Bild / Fig. 2**

**Bild / Fig. 3**

weich / soft		
C45, 1.0503	GG20 0.6020	Kunststoff POM Plastic POM
Verz.-Qual. Gearing grade	Verz.-Qual. Gearing grade	Verz.-Qual. Gearing grade
<b>8 e 25</b>	<b>8 e 26</b>	<b>9 bc 26</b>

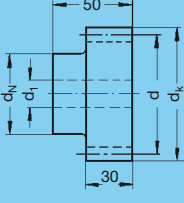
Stahl Steel	Bestell-Nummer Order code		Bild Fig.	Zähnezahl N° of teeth z	d	dk	d <sub>1</sub>	d <sub>N</sub>	d <sub>3</sub>	s	kg		
	Grauguss Grey cast iron	Kunststoff Plastic									Stahl Steel	Grauguss Grey cast iron	Kunststoff Plastic
21 25 012	-	22 25 012	1	12	30,0	35,0	9	20,0	-	-	0,16	-	29
21 25 013	-	22 25 013	1	13	32,5	37,5	9	20,0	-	-	0,18	-	32
21 25 014	-	22 25 014	1	14	35,0	40,0	9	25,0	-	-	0,22	-	40
21 25 015	-	22 25 015	1	15	37,5	42,5	9	25,0	-	-	0,25	-	45
21 25 016	-	22 25 016	1	16	40,0	45,0	9	30,0	-	-	0,31	-	56
21 25 017	-	22 25 017	1	17	42,5	47,5	9	30,0	-	-	0,35	-	63
21 25 018	-	22 25 018	1	18	45,0	50,0	9	35,0	-	-	0,41	-	74
21 25 019	-	22 25 019	1	19	47,5	52,5	12	35,0	-	-	0,43	-	78
21 25 020	-	22 25 020	1	20	50,0	55,0	12	35,0	-	-	0,47	-	85
21 25 021	-	22 25 021	1	21	52,5	57,5	12	35,0	-	-	0,50	-	90
21 25 022	-	22 25 022	1	22	55,0	60,0	12	40,0	-	-	0,53	-	96
21 25 023	-	22 25 023	1	23	57,5	62,5	12	40,0	-	-	0,62	-	112
21 25 024	-	22 25 024	1	24	60,0	65,0	12	40,0	-	-	0,66	-	120
21 25 025	-	22 25 025	1	25	62,5	67,5	12	45,0	-	-	0,75	-	136
21 25 030	-	22 25 030	1	30	75,0	80,0	12	50,0	-	-	0,97	-	176
21 25 035	-	-	1	35	87,5	92,5	12	60,0	-	-	1,49	-	-
21 25 038	-	-	1	38	95,0	100,0	12	60,0	-	-	1,72	-	-
21 25 040	-	-	1	40	100,0	105,0	12	70,0	-	-	1,84	-	-
21 25 045	-	-	1	45	112,5	117,5	15	70,0	-	-	2,36	-	-
21 25 048	-	-	1	48	120,0	125,0	15	80,0	-	-	2,75	-	-
21 25 050	-	-	1	50	125,0	130,0	15	80,0	-	-	2,94	-	-
21 25 057	-	-	1	57	142,5	147,5	15	90,0	-	-	3,67	-	-
21 25 060	-	-	1	60	150,0	155,0	15	90,0	-	-	4,00	-	-
23 25 576	-	-	2	76	190,0	195,0	20	-	-	-	5,50	-	-
23 25 580	-	-	2	80	200,0	205,0	25	-	-	-	6,10	-	-
23 25 595	-	-	2	95	237,5	242,5	25	-	-	-	8,60	-	-
-	23 25 076	-	3	76	190,0	195,0	20	80,0	160	8,0	-	2,50	-
-	23 25 080	-	3	80	200,0	205,0	20	80,0	166	8,0	-	2,70	-
-	23 25 095	-	3	95	237,5	242,5	20	90,0	198	8,0	-	3,70	-
-	23 25 100	-	3	100	250,0	255,0	20	90,0	210	8,0	-	4,40	-
-	23 25 114	-	3	114	285,0	290,0	20	90,0	240	8,0	-	5,10	-

Eine Weiterbearbeitung (Bohrung ausdrehen, nuten, Gewinde anbringen etc.) ist kurzfristig möglich.  
Further finishing (turning bores, keywaying, threading, etc.) is possible within short time.

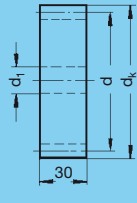




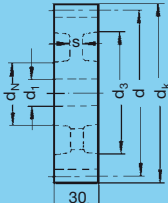
**gerade verzahnt**, Verzahnung gefräst, 20° Eingriffswinkel  
**Straight tooth system**, milled teeth, 20° transverse pressure angle



**Bild / Fig. 1**



**Bild / Fig. 2**



**Bild / Fig. 3**

weich / soft		
C45, 1.0503	GG20 0.6020	Kunststoff POM Plastic POM
Verz.-Qual. Gearing grade	Verz.-Qual. Gearing grade	Verz.-Qual. Gearing grade
<b>8 e 25</b>	<b>8 e 26</b>	<b>9 bc 26</b>

Stahl Steel	Bestell-Nummer Order code		Bild Fig.	Zähnezahl N° of teeth z	d	d <sub>k</sub>	d <sub>1</sub>	d <sub>N</sub>	d <sub>3</sub>	s	kg	kg	g
	Grauguss Grey cast iron	Kunststoff Plastic									Stahl Steel	Grauguss Grey cast iron	Kunststoff Plastic
21 30 012	-	22 30 012	1	12	36	42	14	25	-	-	0,25	-	45
21 30 013	-	22 30 013	1	13	39	45	14	25	-	-	0,30	-	54
21 30 014	-	22 30 014	1	14	42	48	14	25	-	-	0,34	-	61
21 30 015	-	22 30 015	1	15	45	51	14	35	-	-	0,41	-	74
21 30 016	-	22 30 016	1	16	48	54	14	35	-	-	0,51	-	92
21 30 017	-	22 30 017	1	17	51	57	14	42	-	-	0,67	-	121
21 30 018	-	22 30 018	1	18	54	60	14	45	-	-	0,70	-	127
21 30 019	-	22 30 019	1	19	57	63	14	45	-	-	0,75	-	136
21 30 020	-	22 30 020	1	20	60	66	14	45	-	-	0,82	-	149
21 30 021	-	22 30 021	1	21	63	69	14	45	-	-	0,89	-	161
21 30 022	-	22 30 022	1	22	66	72	14	50	-	-	1,05	-	190
21 30 023	-	22 30 023	1	23	69	75	14	50	-	-	1,10	-	200
21 30 024	-	22 30 024	1	24	72	78	14	50	-	-	1,20	-	218
21 30 025	-	22 30 025	1	25	75	81	14	60	-	-	1,35	-	245
21 30 027	-	-	1	27	81	87	14	60	-	-	1,60	-	-
21 30 028	-	-	1	28	84	90	14	60	-	-	1,70	-	-
21 30 030	-	-	1	30	90	96	14	60	-	-	1,80	-	-
21 30 032	-	-	1	32	96	102	14	60	-	-	2,00	-	-
21 30 035	-	-	1	35	105	111	14	80	-	-	2,70	-	-
21 30 036	-	-	1	36	108	114	14	80	-	-	2,80	-	-
21 30 038	-	-	1	38	114	120	14	80	-	-	3,00	-	-
21 30 040	-	-	1	40	120	126	14	80	-	-	3,30	-	-
23 30 545	-	-	2	45	135	141	20	-	-	-	3,30	-	-
23 30 548	-	-	2	48	144	150	20	-	-	-	3,80	-	-
23 30 550	-	-	2	50	150	156	25	-	-	-	4,10	-	-
23 30 552	-	-	2	52	156	162	25	-	-	-	4,50	-	-
23 30 556	-	-	2	56	168	174	25	-	-	-	5,20	-	-
23 30 560	-	-	2	60	180	186	25	-	-	-	6,00	-	-
23 30 576	-	-	2	76	228	234	25	-	-	-	9,60	-	-
23 30 580	-	-	2	80	240	246	25	-	-	-	10,60	-	-
23 30 595	-	-	2	95	285	291	25	-	-	-	15,00	-	-
-	23 30 050	-	3	50	150	156	25	80	122	9,5	-	2,50	-
-	23 30 060	-	3	60	180	186	25	80	152	9,5	-	3,20	-
-	23 30 080	-	3	80	240	246	25	90	212	9,5	-	4,50	-
-	23 30 095	-	3	95	285	291	25	100	254	10,5	-	6,40	-
-	23 30 100	-	3	100	300	306	25	100	268	12,5	-	7,60	-
-	23 30 114	-	3	114	342	348	25	100	310	12,5	-	9,00	-

Eine Weiterbearbeitung (Bohrung ausdrehen, nuten, Gewinde anbringen etc.) ist kurzfristig möglich.  
Further finishing (turning bores, keywaying, threading, etc.) is possible within short time.





gerade verzahnt, Verzahnung gefräst, 20° Eingriffswinkel  
Straight tooth system, milled teeth, 20° transverse pressure angle

**Bild 1 / Fig. 1**

**Bild / Fig. 2**

**Bild / Fig. 3**

weich / soft	
C45 1.0503	GG 20 0.6020
Verz.-Qual. Gearing grade <b>8 e 25</b>	Verz.-Qual. Gearing grade <b>8 e 26</b>

Stahl Steel	Bestell-Nummer Order code		Bild Fig.	Zähnezahl N° of teeth z	d	d <sub>k</sub>	d <sub>1</sub>	d <sub>N</sub>	d <sub>3</sub>	s	kg		
	Grauguss Grey cast iron	Kunststoff Plastic									Stahl Steel	Grauguss Grey cast iron	Kunststoff Plastic
21 40 012	-	-	1	12	48	56	16	35	-	-	0,58	-	-
21 40 013	-	-	1	13	52	60	16	35	-	-	0,72	-	-
21 40 014	-	-	1	14	56	64	16	45	-	-	0,90	-	-
21 40 015	-	-	1	15	60	68	16	45	-	-	1,00	-	-
21 40 016	-	-	1	16	64	72	16	45	-	-	1,10	-	-
21 40 017	-	-	1	17	68	76	16	50	-	-	1,30	-	-
21 40 018	-	-	1	18	72	80	16	50	-	-	1,40	-	-
21 40 019	-	-	1	19	76	84	16	60	-	-	1,70	-	-
21 40 020	-	-	1	20	80	88	16	60	-	-	1,80	-	-
21 40 021	-	-	1	21	84	92	16	70	-	-	2,20	-	-
21 40 022	-	-	1	22	88	96	16	70	-	-	2,50	-	-
21 40 023	-	-	1	23	92	100	16	75	-	-	2,60	-	-
21 40 024	-	-	1	24	96	104	16	75	-	-	2,75	-	-
21 40 025	-	-	1	25	100	108	16	75	-	-	2,90	-	-
21 40 030	-	-	1	30	120	128	16	75	-	-	4,00	-	-
23 40 538	-	-	2	38	152	160	25	-	-	-	5,70	-	-
23 40 540	-	-	2	40	160	168	25	-	-	-	6,30	-	-
23 40 545	-	-	2	45	180	188	25	-	-	-	8,00	-	-
23 40 548	-	-	2	48	192	200	25	-	-	-	9,00	-	-
23 40 550	-	-	2	50	200	208	25	-	-	-	9,80	-	-
23 40 552	-	-	2	52	208	216	25	-	-	-	10,60	-	-
23 40 556	-	-	2	56	224	232	25	-	-	-	12,30	-	-
23 40 560	-	-	2	60	240	248	25	-	-	-	14,20	-	-
23 40 576	-	-	2	76	304	312	25	-	-	-	22,70	-	-
23 40 580	-	-	2	80	320	328	25	-	-	-	25,20	-	-
23 40 595	-	-	2	95	380	388	25	-	-	-	35,60	-	-
-	23 40 038	-	3	38	152	160	25	80	116	12,5	-	3,90	-
-	23 40 040	-	3	40	160	168	25	80	124	12,5	-	4,20	-
-	23 40 050	-	3	50	200	208	25	90	164	12,5	-	5,60	-
-	23 40 060	-	3	60	240	248	25	90	200	12,5	-	7,30	-
-	23 40 076	-	3	76	304	312	25	100	264	12,5	-	9,50	-
-	23 40 080	-	3	80	320	328	25	100	280	13,5	-	10,70	-
-	23 40 095	-	3	95	380	388	25	110	340	13,5	-	14,30	-
-	23 40 100	-	3	100	400	408	25	110	360	13,5	-	15,50	-
-	23 40 114	-	3	114	456	464	25	110	415	13,5	-	19,70	-

Eine Weiterbearbeitung (Bohrung ausdrehen, nuten, Gewinde anbringen etc.) ist kurzfristig möglich.  
Further finishing (turning bores, keywaying, threading, etc.) is possible within short time.



**gerade verzahnt**, Verzahnung gefräst, 20° Eingriffswinkel  
**Straight tooth system**, milled teeth, 20° transverse pressure angle

**Bild / Fig. 1**

**Bild / Fig. 2**

**Bild / Fig. 3**

**weich / soft**

C45 1.0503	GG 20 0.6020
Verz.-Qual. Gearing grade	Verz.-Qual. Gearing grade
<b>8 e 25</b>	<b>8 e 26</b>

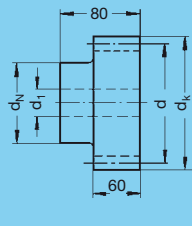
Stahl Steel	Bestell-Nummer Order code		Bild Fig.	Zähnezahl N° of teeth z	d	d <sub>k</sub>	d <sub>1</sub>	d <sub>N</sub>	d <sub>3</sub>	s	kg		
	Grauguss Grey cast iron	Kunststoff Plastic									Stahl Steel	Grauguss Grey cast iron	Kunststoff Plastic
21 50 012	-	-	1	12	60	70	20	45	-	-	1,20	-	-
21 50 013	-	-	1	13	65	75	20	45	-	-	1,38	-	-
21 50 014	-	-	1	14	70	80	20	55	-	-	1,78	-	-
21 50 015	-	-	1	15	75	85	20	60	-	-	2,00	-	-
21 50 016	-	-	1	16	80	90	20	60	-	-	2,10	-	-
21 50 017	-	-	1	17	85	95	20	70	-	-	2,20	-	-
21 50 018	-	-	1	18	90	100	20	70	-	-	2,58	-	-
21 50 019	-	-	1	19	95	105	20	70	-	-	2,80	-	-
21 50 020	-	-	1	20	100	110	20	70	-	-	3,10	-	-
21 50 021	-	-	1	21	105	115	20	70	-	-	3,80	-	-
21 50 022	-	-	1	22	110	120	20	80	-	-	4,30	-	-
21 50 023	-	-	1	23	115	125	20	80	-	-	4,70	-	-
21 50 024	-	-	1	24	120	130	20	80	-	-	5,00	-	-
21 50 025	-	-	1	25	125	135	20	80	-	-	5,40	-	-
21 50 030	-	-	1	30	150	160	20	90	-	-	7,70	-	-
23 50 536	-	-	2	36	180	190	30	-	-	-	9,90	-	-
23 50 538	-	-	2	38	190	200	30	-	-	-	11,10	-	-
23 50 540	-	-	2	40	200	210	30	-	-	-	12,30	-	-
23 50 545	-	-	2	45	225	235	30	-	-	-	15,60	-	-
23 50 548	-	-	2	48	240	250	30	-	-	-	17,70	-	-
23 50 550	-	-	2	50	250	260	30	-	-	-	19,20	-	-
23 50 552	-	-	2	52	260	270	30	-	-	-	20,80	-	-
23 50 556	-	-	2	56	280	290	30	-	-	-	24,10	-	-
23 50 560	-	-	2	60	300	310	30	-	-	-	27,70	-	-
23 50 576	-	-	2	76	380	390	30	-	-	-	44,40	-	-
23 50 580	-	-	2	80	400	410	30	-	-	-	49,20	-	-
23 50 595	-	-	2	95	475	485	30	-	-	-	69,50	-	-
-	23 50 038	-	3	38	190	200	40	100	160	14	-	6,80	-
-	23 50 040	-	3	40	200	210	40	100	165	14	-	7,40	-
-	23 50 050	-	3	50	250	260	40	100	215	16	-	9,60	-
-	23 50 060	-	3	60	300	310	40	100	260	16	-	12,60	-
-	23 50 076	-	3	76	380	390	40	120	340	16	-	18,20	-
-	23 50 080	-	3	80	400	410	40	130	360	16	-	19,00	-
-	23 50 095	-	3	95	475	485	40	130	430	16	-	26,00	-
-	23 50 100	-	3	100	500	510	40	180	450	22	-	30,70	-
-	23 50 114	-	3	114	570	580	40	180	510	22	-	38,70	-
-	23 50 150	-	3	150	750	760	40	180	700	22	-	58,00	-

Eine Weiterbearbeitung (Bohrung ausdrehen, nuten, Gewinde anbringen etc.) ist kurzfristig möglich.  
Further finishing (turning bores, keywaying, threading, etc.) is possible within short time.

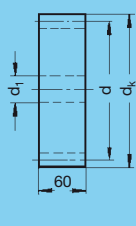




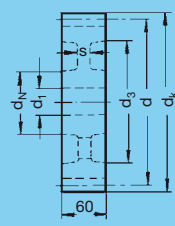
### Modul 6, gerade verzahnt, Verzahnung gefräst, 20° Eingriffswinkel Module 6, straight tooth system, milled teeth, 20° transverse pressure angle



**Bild / Fig. 1**



**Bild / Fig. 2**



**Bild / Fig. 3**

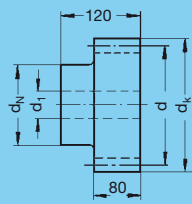
**weich / soft**

C45 1.0503	GG 20 0.6020
Verz.-Qual. Gearing grade	Verz.-Qual. Gearing grade
<b>8 e 25</b>	<b>8 e 26</b>

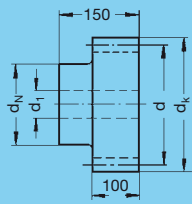
Stahl Steel	Bestell-Nummer Order code			Bild Fig.	Zähnezahl N° of teeth z	d	d <sub>k</sub>	d <sub>1</sub>	d <sub>N</sub>	d <sub>3</sub>	s	kg		
	Grauguss Grey cast iron	Kunststoff Plastic	Stahl Steel									Grauguss Grey cast iron	Kunststoff Plastic	
-	-	-	1	15	90	102	20	60	-	-	-	3,20	-	-
-	-	-	1	18	108	120	20	80	-	-	-	4,80	-	-
-	-	-	1	19	114	126	20	80	-	-	-	5,40	-	-
-	-	-	1	20	120	132	20	90	-	-	-	6,00	-	-
-	-	-	1	21	126	138	20	90	-	-	-	6,70	-	-
-	-	-	1	22	132	144	20	100	-	-	-	7,40	-	-
-	-	-	1	25	150	162	20	110	-	-	-	9,60	-	-
-	-	-	2	30	180	192	30	-	-	-	-	11,90	-	-
-	-	-	2	36	216	228	30	-	-	-	-	17,20	-	-
-	-	-	2	38	228	240	30	-	-	-	-	19,20	-	-
-	-	-	2	40	240	252	30	-	-	-	-	21,20	-	-
-	23 60 030	-	3	30	180	192	40	100	132	20	-	-	8,80	-
-	23 60 038	-	3	38	228	240	40	100	180	20	-	-	12,10	-
-	23 60 050	-	3	50	300	312	40	120	252	20	-	-	19,00	-
-	23 60 076	-	3	76	456	468	40	130	408	20	-	-	36,40	-

Eine Weiterbearbeitung (Bohrung ausdrehen, nuten, Gewinde anbringen etc.) ist kurzfristig möglich.  
Further finishing (turning bores, keywaying, threading, etc.) is possible within short time.

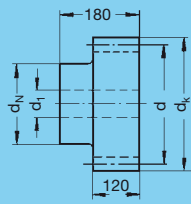
### Modul 8 bis 12, gerade verzahnt, Verzahnung gefräst, 20° Eingriffswinkel Module 8 to 12, straight tooth system, milled teeth, 20° transverse pressure angle



**Bild / Fig. 1**



**Bild / Fig. 2**



**Bild / Fig. 3**

**weich / soft**

Ck45 1.0503
Verz.-Qual. Gearing grade
<b>8 e 25</b>

Bestell-Nummer Order code	Bild Fig.	Zähnezahl N° of teeth	d	d <sub>k</sub>	d <sub>1</sub>	d <sub>N</sub>	d <sub>3</sub>	s	kg
<b>Modul / Module 8</b>									
21 80 015	1	15	120	136	40	90	-	-	7,70
21 80 018	1	18	144	160	40	100	-	-	9,90
21 80 020	1	20	160	176	40	120	-	-	14,80
21 80 024	1	24	192	208	40	150	-	-	22,00
21 80 025	1	25	200	216	40	150	-	-	23,80
21 80 030	1	30	240	256	40	190	-	-	32,00
<b>Modul / Module 10*</b>									
21 11 020	2	20	200	220	40	150	-	-	35,00
<b>Modul / Module 12*</b>									
21 12 020	3	20	240	264	40	170	-	-	51,33

\* mit Transportbohrung M8 / with threads for handling

Eine Weiterbearbeitung (Bohrung ausdrehen, nuten, Gewinde anbringen etc.) ist kurzfristig möglich.  
Further finishing (turning bores, keywaying, threading, etc.) is possible within short time.