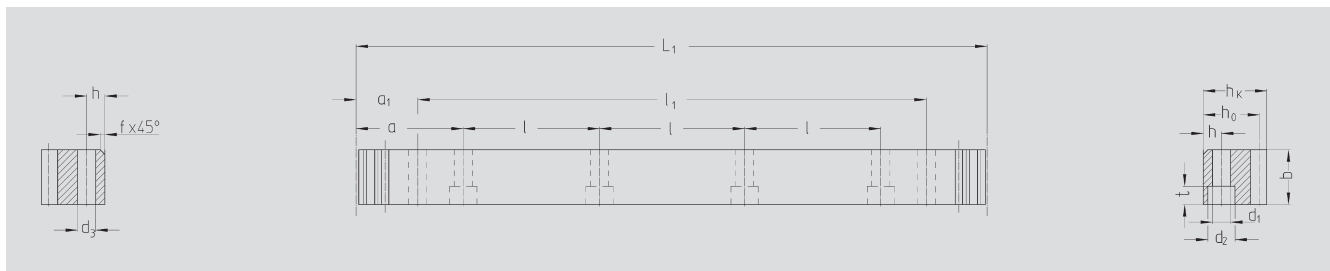




**ATLANTA-Quality 8**



| Order Code | Module | $L_1$   | N° of teeth | $b^{+0,4}$ | $h_k$ | $h_0$ | $f$ | $a$   | $l$    | N° of holes | $h$ | $d_1$ | $d_2$ | $t$ | $a_1$ | $l_1$  | $d_3$ | kg   |
|------------|--------|---------|-------------|------------|-------|-------|-----|-------|--------|-------------|-----|-------|-------|-----|-------|--------|-------|------|
| 34 20 108  | 2      | 1005.30 | 160         | 25         | 24    | 22    | 2   | 62.80 | 125.66 | 8           | 8   | 7     | 11    | 7   | 31.4  | 942.7  | 5.7   | 4.2  |
| 34 20 208  | 2      | 2010.62 | 320         | 25         | 24    | 22    | 2   | 62.83 | 125.66 | 16          | 8   | 7     | 11    | 7   | 31.3  | 1948.0 | 5.7   | 8.4  |
| 34 30 108  | 3      | 1017.90 | 108         | 30         | 29    | 26    | 2   | 63.60 | 127.23 | 8           | 9   | 10    | 15    | 9   | 34.4  | 949.1  | 7.7   | 6.0  |
| 34 30 208  | 3      | 2035.75 | 216         | 30         | 29    | 26    | 2   | 63.62 | 127.23 | 16          | 9   | 10    | 15    | 9   | 34.4  | 1967.0 | 7.7   | 12.0 |
| 34 40 108  | 4      | 1005.30 | 80          | 40         | 39    | 35    | 2   | 62.80 | 125.66 | 8           | 12  | 14    | 20    | 13  | 37.5  | 930.3  | 11.7  | 10.5 |
| 34 40 208  | 4      | 2010.62 | 160         | 40         | 39    | 35    | 2   | 62.83 | 125.66 | 16          | 12  | 14    | 20    | 13  | 37.5  | 1935.6 | 11.7  | 20.4 |
| 34 50 108  | 5      | 1005.30 | 64          | 50         | 39    | 34    | 2.5 | 62.80 | 125.66 | 8           | 12  | 14    | 20    | 13  | 30.2  | 945.0  | 11.7  | 13.4 |
| 34 50 208  | 5      | 2010.62 | 128         | 50         | 39    | 34    | 2.5 | 62.83 | 125.66 | 16          | 12  | 14    | 20    | 13  | 30.2  | 1950.4 | 11.7  | 27.6 |

Without bores on request.

Total pitch error:

$$GT_f/1000 \leq 0.060 \text{ mm}$$

$$GT_f/2000 \leq 0.078 \text{ mm } (\leq 0.039 \text{ mm}/1000)$$

- Teeth hardened with the ATLANTA high performance hardening process and ground
- Heat-treatable steel according to ATLANTA-Standard
- Bright steel, profile blasted

Mounting racks see page ZF-2.

To achieve precision rack joints, we recommend our patented rack assembly kit, see page ZF-4.

For lubrication of rack & pinions we recommend our automatic lubrication systems, see page ZE-1.

For the calculation and selection of the rack & pinion drive, see page ZD-1.

Screws for rack mounting, see page ZF-3.

