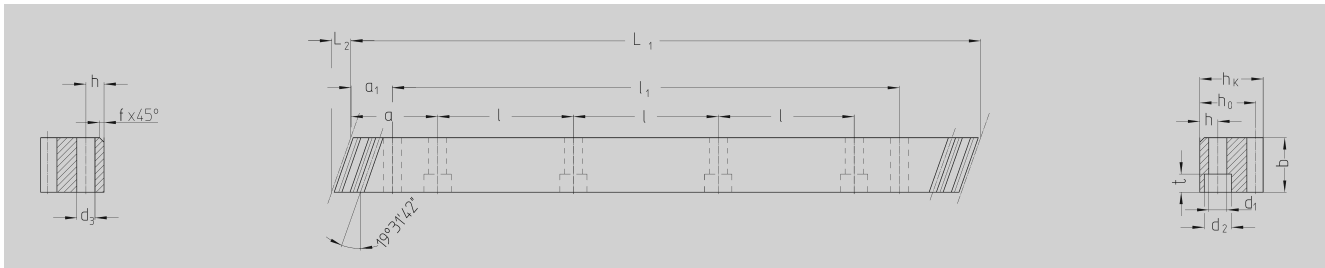




Quality 9



Order Code	Module	L ₁	L ₂	N° of Teeth	b	h _k	h ₀	f	a	l	N° of Holes	h	d ₁	d ₂	t	a ₁	l ₁	d ₃	kg
47 15 100	1.5	1000.00	6.0	200	17	17	15.5		62.5	125	8	6	6	10	6	31.7	936.6	5.7	1.30
47 16 100	1.5	1000.00	6.0	200	17	17	15.5		62.5	125	12	6	6	10	6	31.7	1436.6	5.7	1.30
47 15 150	1.5	1500.00	6.0	300	17	17	15.5		62.5	125	12	6	6	10	6	31.7	1436.6	5.7	1.95
47 16 150	1.5	1500.00	6.0	300	17	17	15.5		62.5	125	16	6	6	10	6	31.7	1936.6	5.7	1.95
47 15 200	1.5	2000.00	6.0	400	17	17	15.5		62.5	125	16	6	6	10	6	31.7	1936.6	5.7	2.60
47 16 200	1.5	2000.00	6.0	400	17	17	15.5		62.5	125	16	6	6	10	6	31.7	1936.6	5.7	2.60
47 20 050	2	500.00	9.2	75	26	24	22		62.5	125	4	8	7	11	7	31.7	436.6	5.7	2.20
47 21 050	2	500.00	9.2	75	26	24	22		62.5	125	8	8	7	11	7	31.7	936.6	5.7	2.20
47 20 100	2	1000.00	9.2	150	26	24	22		62.5	125	8	8	7	11	7	31.7	936.6	5.7	4.40
47 21 100	2	1000.00	9.2	150	26	24	22		62.5	125	16	8	7	11	7	31.7	1936.6	5.7	4.40
47 20 200	2	2000.00	9.2	300	26	24	22		62.5	125	16	8	7	11	7	31.7	1936.6	5.7	8.80
47 21 200	2	2000.00	9.2	300	26	24	22		62.5	125	16	8	7	11	7	31.7	1936.6	5.7	8.80
47 30 050	3	500.00	11.0	50	31	29	26		62.5	125	4	9	10	15	9	35.0	430.0	7.7	3.10
47 31 050	3	500.00	11.0	50	31	29	26		62.5	125	8	9	10	15	9	35.0	930.0	7.7	3.10
47 30 100	3	1000.00	11.0	100	31	29	26		62.5	125	8	9	10	15	9	35.0	930.0	7.7	6.20
47 31 100	3	1000.00	11.0	100	31	29	26		62.5	125	16	9	10	15	9	35.0	1930.0	7.7	6.20
47 30 200	3	2000.00	11.0	200	31	29	26		62.5	125	16	9	10	15	9	35.0	1930.0	7.7	12.50
47 31 200	3	2000.00	11.0	200	31	29	26		62.5	125	24	9	10	15	9	35.0	2930.0	7.7	12.50
47 30 300	3	3000.00	11.0	300	31	29	26		62.5	125	24	9	10	15	9	35.0	2930.0	7.7	18.60
47 31 300	3	3000.00	11.0	300	31	29	26		62.5	125	24	9	10	15	9	35.0	2930.0	7.7	18.60
47 40 050 ¹⁾	4	506.67	14.5	38	41	39	35		62.5	125	4	12	10	15	9	33.3	433.0	7.7	5.60
47 41 050	4	506.67	14.5	38	41	39	35		62.5	125	8	12	10	15	9	33.3	933.4	7.7	5.60
47 40 100	4	1000.00	14.5	75	41	39	35		62.5	125	8	12	10	15	9	33.3	933.4	7.7	11.10
47 41 100	4	1000.00	14.5	75	41	39	35		62.5	125	16	12	10	15	9	33.3	1933.4	7.7	11.10
47 40 200	4	2000.00	14.5	150	41	39	35		62.5	125	16	12	10	15	9	33.3	1933.4	7.7	22.20
47 41 200	4	2000.00	14.5	150	41	39	35		62.5	125	16	12	10	15	9	33.3	1933.4	7.7	22.20
47 50 100	5	1000.00	17.7	60	50	39	34		62.5	125	8	12	14	20	13	37.5	925.0	11.7	13.26
47 51 100	5	1000.00	17.7	60	50	39	34		62.5	125	16	12	14	20	13	37.5	1925.0	11.7	13.26
47 50 200	5	2000.00	17.7	120	50	39	34		62.5	125	16	12	14	20	13	37.5	1925.0	11.7	26.52
47 51 200	5	2000.00	17.7	120	50	39	34		62.5	125	16	12	14	20	13	37.5	1925.0	11.7	26.52
47 60 100	6	1000.00	21.3	50	60	49	43		62.5	125	8	16	18	26	17	37.5	925.0	15.7	20.12
47 61 100	6	1000.00	21.3	50	60	49	43		62.5	125	16	16	18	26	17	37.5	1925.0	15.7	20.12
47 60 200	6	2000.00	21.3	100	60	49	43		62.5	125	16	16	18	26	17	37.5	1925.0	15.7	40.24
47 61 200	6	2000.00	21.3	100	60	49	43		62.5	125	16	16	18	26	17	37.5	1925.0	15.7	40.24
47 80 100	8	960.00	28.7	36	81	79	71		60.0	120	8	25	22	33	21	120.0	720.0	19.7	44.85
47 81 100	8	960.00	28.7	36	81	79	71		60.0	120	16	25	22	33	21	120.0	1680.0	19.7	44.85
47 80 200	8	1920.00	28.7	72	81	79	71		60.0	120	16	25	22	33	21	120.0	1680.0	19.7	89.71
47 81 200	8	1920.00	28.7	72	81	79	71		60.0	120	16	25	22	33	21	120.0	1680.0	19.7	89.71
47 10 100	10	1000.00	35.5	30	100	99	89		62.5	125	8	32	33	48	32	125	750	19.7	69.80
47 11 100	10	1000.00	35.5	30	100	99	89		62.5	125	8	32	33	48	32	125	750	19.7	69.80

1) These racks should be used for continuous linking only with the left side (see sketch).

Total pitch error $GT_f/1000 \leq 0.150$ mm.

- Milled teeth
- Material C45
- Bright Steel

Mounting racks, see page ZF-2.

Further information see page ZA-10.

