

FEATURES

Premium Components

Twin viton seals with stainless steel 316L shield.



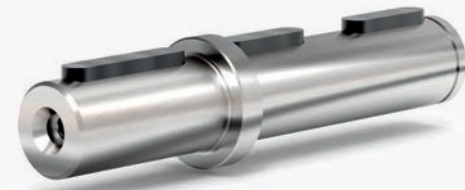
Removable hollow shaft with key for safe torque transmissions.



Fully modular IEC flanges and compact NEMA C motor flanges.



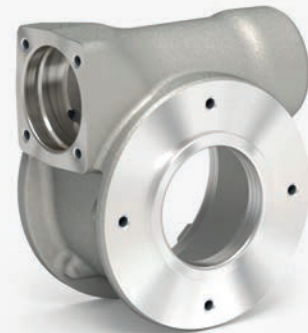
Output shaft is produced in AISI 316L. Special cover assures full protection of oil seals.



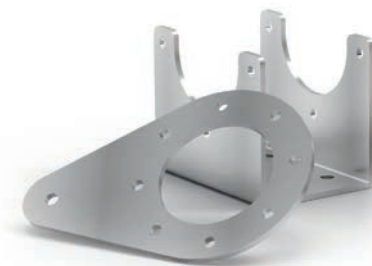
Input coupling



Housing with special smooth surfaces.



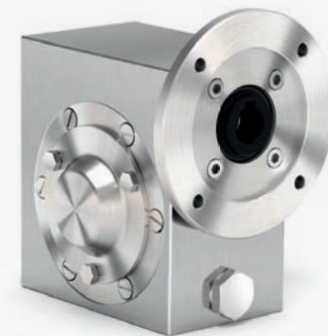
All stainless steel 316L hardware.



Hardened and ground gears.



Closed protection cap in AISI 316L with o-ring.



Electric Motors

4 Poles
Voltage: Δ/Y 230/400V - 50Hz
Protection: I.C.I.F - IP69k - IC410
Efficiency: IE3 (IEC60034-30, IEC60034-2-1, Pn ≥ 0,75kW)
Duty Cycle: S1
Other Features: INVERTER DUTY, HYGIENIC, PTO PROTECTION INCLUDED

APM Series
Aluminum Premium Electric Motors



Motor	kW	IE3	rpm (min-1)	Nm	A (400V)	COS (φ)	Kg
63A	0.12		1440	0.80	0.44	0.57	6.9
63B	0.18		1440	1.19	0.58	0.62	8.0
71A	0.25		1440	1.66	0.72	0.64	9.4
71B	0.37		1440	2.45	1.10	0.64	11.1
80A	0.55		1460	3.60	1.50	0.67	15.3
80B	0.75	IE3 PREMIUM EFFICIENCY	1460	4.91	2.10	0.67	18.0
90S	1.1	IE3 PREMIUM EFFICIENCY	1460	7.20	2.90	0.70	22.7
90L	1.5	IE3 PREMIUM EFFICIENCY	1460	9.81	4.00	0.70	28.4

SPM Series
Stainless Steel Premium Electric Motors



Motor	kW	IE3	rpm (min-1)	Nm	A (400V)	COS (φ)	Kg
63A	0.12		1440	0.80	0.44	0.57	6.9
63B	0.18		1440	1.19	0.58	0.62	8.0
71A	0.25		1440	1.66	0.72	0.64	9.4
71B	0.37		1440	2.45	1.10	0.64	11.1
80A	0.55		1460	3.60	1.50	0.67	15.3
80B	0.75	IE3 PREMIUM EFFICIENCY	1460	4.91	2.10	0.67	18.0
90S	1.1	IE3 PREMIUM EFFICIENCY	1460	7.20	2.90	0.70	22.7
90L	1.5	IE3 PREMIUM EFFICIENCY	1460	9.81	4.00	0.70	28.4
100LA	2.2	IE3 PREMIUM EFFICIENCY	1440	14.6	4.80	0.79	34.0

ATLANTA Drive Systems Inc.
1775 Route 34, Unit D-10
Farmingdale, NJ 07727
Phone: (800) 505-1715
Email: info@atlantadrives.com
Website: www.atlantadrives.com

CLEAN-GEARTECH



AN INNOVATIVE PRODUCT RANGE



HYGIENIC DESIGN

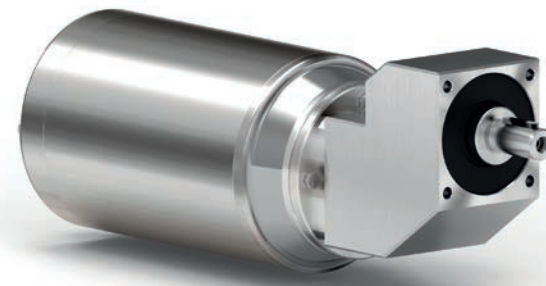
I Series

Full Stainless Steel Gearboxes

VFI Series
Stainless Steel Worm Gearboxes



RCI Series
Stainless Steel Ratio Multiplier



BVI Series
Stainless Steel Helical Bevel Gearboxes



Ratios: 5 to 102

Type	Torque	Input power
I30	21 Nm	0.09 ÷ 0.18 kW
I45	41 Nm	0.12 ÷ 0.37 kW
I50	72 Nm	0.12 ÷ 0.75 kW
I63	147 Nm	0.37 ÷ 1.8 kW
I85	347 Nm	0.55 ÷ 4.0 kW
I11	651 Nm	1.1 ÷ 4.0 kW

Ratios: 1.57 to 10.86

Type	Torque	Input power
4111	38 Nm	0.37 ÷ 1.5 kW

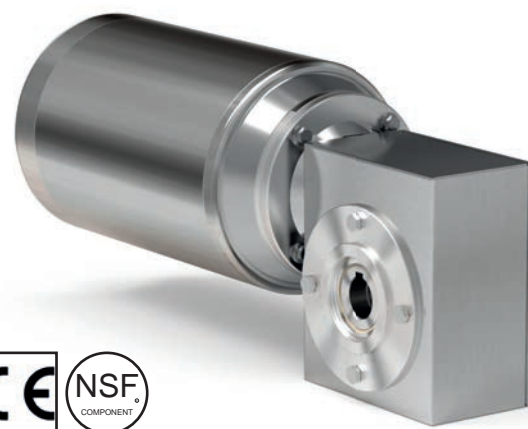
Ratios: 6.03 to 77.36

Type	Torque	Input power
X42I	150 Nm	0.25 ÷ 1.5 kW
X62I	410 Nm	0.75 ÷ 4.0 kW

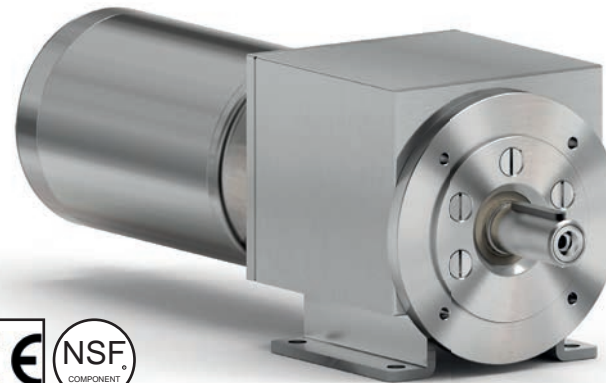
L Series

Stainless Steel Shielded Gearboxes

VFL series
Stainless Steel Shielded Worm Gearboxes



RCL Series
Stainless Steel Shielded Coaxial Gearboxes



BVL Series
Stainless Steel Shielded Helical Bevel Gearboxes



Ratios: 7 to 102

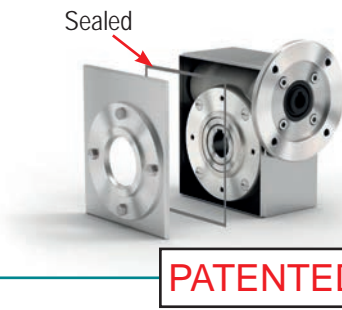
Type	Torque Coppia	Input power Potenza in entrata
LD45	41 Nm	0.12 ÷ 0.37 kW
LD50	72 Nm	0.12 ÷ 0.75 kW
LD63	147 Nm	0.37 ÷ 1.8 kW
LD85	347 Nm	0.55 ÷ 4.0 kW

Ratios: 1.3 to 61.89

Type	Torque	Input power
Ratio Multiplier		
411L	38 Nm	0.37 ÷ 1.5 kW
511L	110 Nm	1.1 ÷ 4.0 kW
Coaxial gearboxes		
402L	160 Nm	0.37 ÷ 1.5 kW
602L	520 Nm	1.1 ÷ 7.5 kW

Ratios: 4.83 to 77.55

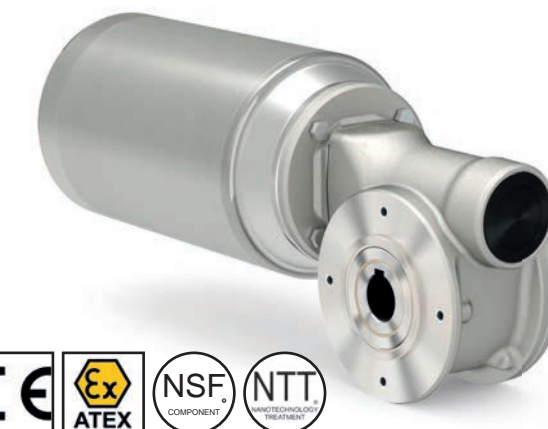
Type	Torque	Input power
X22L	50 Nm	0.09 ÷ 0.37 kW
X32L	90 Nm	0.18 ÷ 1.5 kW
X42L	150 Nm	0.25 ÷ 1.5 kW
X52L	250 Nm	0.37 ÷ 3.0 kW
X62L	410 Nm	0.75 ÷ 4.0 kW



Z Series

Aluminum Gearboxes with NTT Treatment

VFZ Series
Aluminum Worm Gearboxes



RCZ Series
Aluminum Ratio Multiplier



Ratios: 5 ÷ 102

Type	Torque	Input power
Z30	21 Nm	0.09 ÷ 0.18 kW
Z45	41 Nm	0.12 ÷ 0.37 kW
Z50	72 Nm	0.12 ÷ 0.75 kW
Z63	147 Nm	0.37 ÷ 1.8 kW
Z85	347 Nm	0.55 ÷ 4.0 kW

Ratios: 2.05 ÷ 9.83

Type	Torque	Input power
211Z	20 Nm	0.25 ÷ 0.37 kW

NTT™ is a special surface treatment which results in modified external properties of the complete unit.