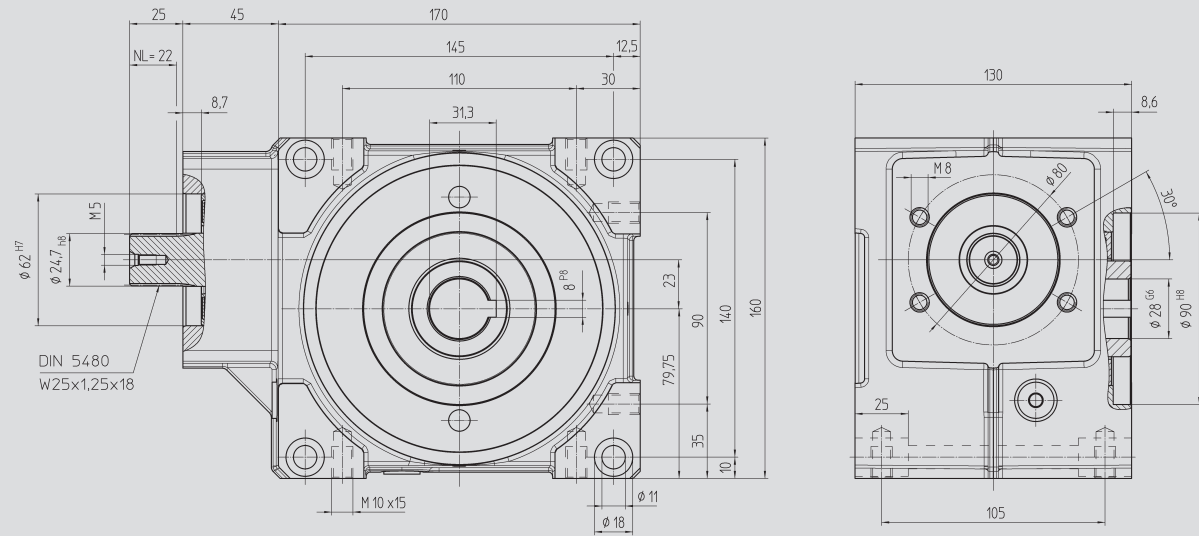




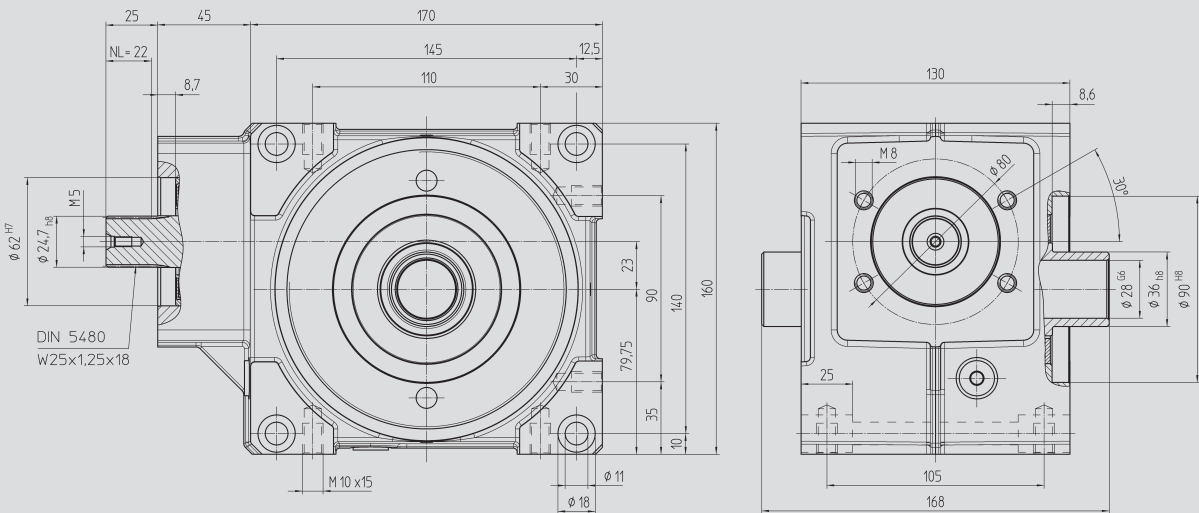
Size BG 63

Fig. 1 Output shaft with key connection



Size BG 63

Fig. 2 Output shaft for clamp connection 80 84 036

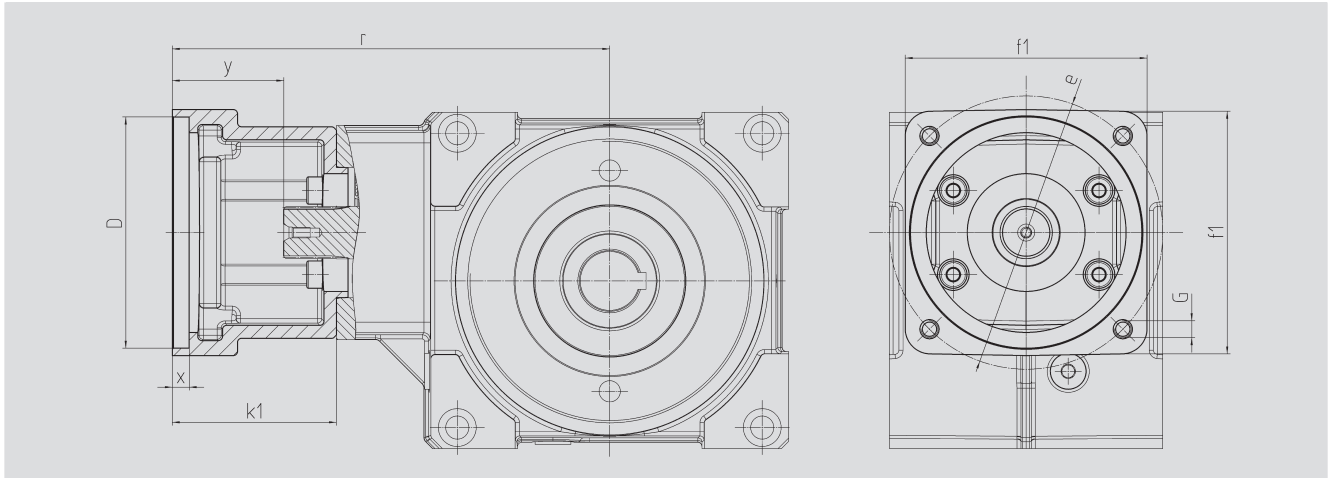


Order Code	Ratio i	J_{red} 10 ⁻⁴ kg m ²
Fig. 1	Fig. 2	
51 24 005	51 34 005	4.75
51 24 007	51 34 007	6.75
51 24 009	51 34 009	9.25

With food grade oil, order code 51 24 1xx / 51 34 1xx. With ATEX version with food grade oil, order code 51 24 2xx / 51 34 2xx.



Motor Flange



Size 63 mm

Order Code	D ^{G7}	k ₁	r	x	y	f ₁	e	G	kg
65 59 301	95.0	62	192	6	37	100	115	M8	1.0
65 59 302	50.0	62	192	6	37	100	70, 95, 115	M4,M6,M8	1.0
65 59 303	80.0	62	192	6	37	100	100	M6	1.0
65 59 304	95.0	78	208	6	53	115	130	M8	1.0
65 59 305	95.0	72	202	5	47	105	115	M8	1.0
65 59 306	60.0	74	204	7	49	100	75, 90, 115	M5,M5,M8	1.0
65 59 307	70.0	70	200	7	45	100	90, 115	M6,M8	1.0
65 59 401	95.0	73	203	7	48	100	115	M8	1.0
65 59 402	110.0	78	208	7	53	115	130	M8	1.0
65 59 403	95.0	73	203	7	48	115	130	M8	1.0
65 59 404	110.0	73	203	7	48	115	130	M8	1.0
65 59 405	95.0	78	208	7	53	140	165	M10	1.0
65 59 406	110.0	78	208	7	53	140	165	M10	1.0
65 59 407	130.0	78	208	7	53	140	165	M10	1.0
65 59 409	130.0	98	228	7	73	140	165	M10	1.5
65 59 410	110.0	74	204	7	49	120	145	M8	1.0
65 59 411	110.0	84	214	7	59	120	145	M8	1.5
65 59 412	114.3	105	235	7	80	180	200	M12	3.5
65 59 413	114.3	139	269	7	114	180	200	M12	6.0
65 59 414	114.3	91	221	7	66	180	200	M12	2.5
65 59 415	110.0	89	219	7	64	120	145	M8	1.5

The order should contain gear box 51 24 0xx / 51 34 0xx and flange 65 59 3xx or 4xx.