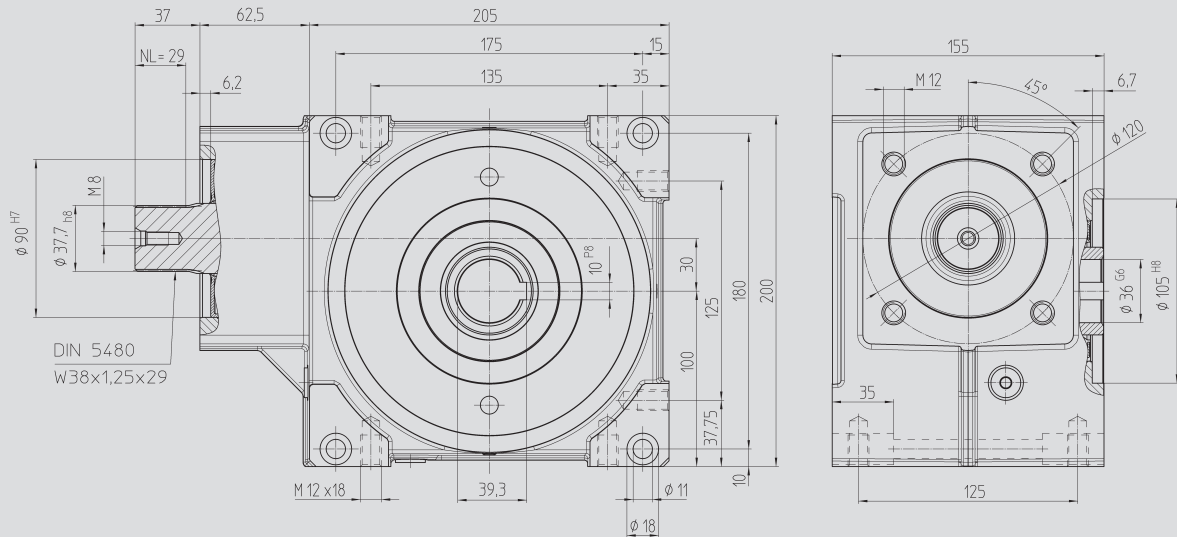




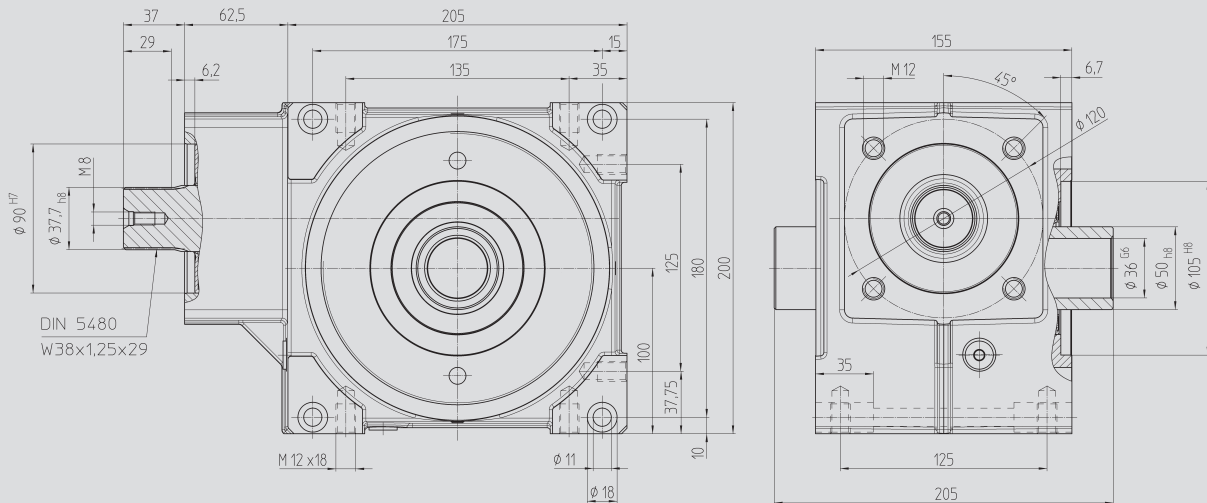
Size BG 80

Fig. 1 Output shaft with key connection



Size BG 80

Fig. 2 Output shaft for clamp connection 80 85 050



Order Code

Fig. 1

Fig. 2

Ratio i



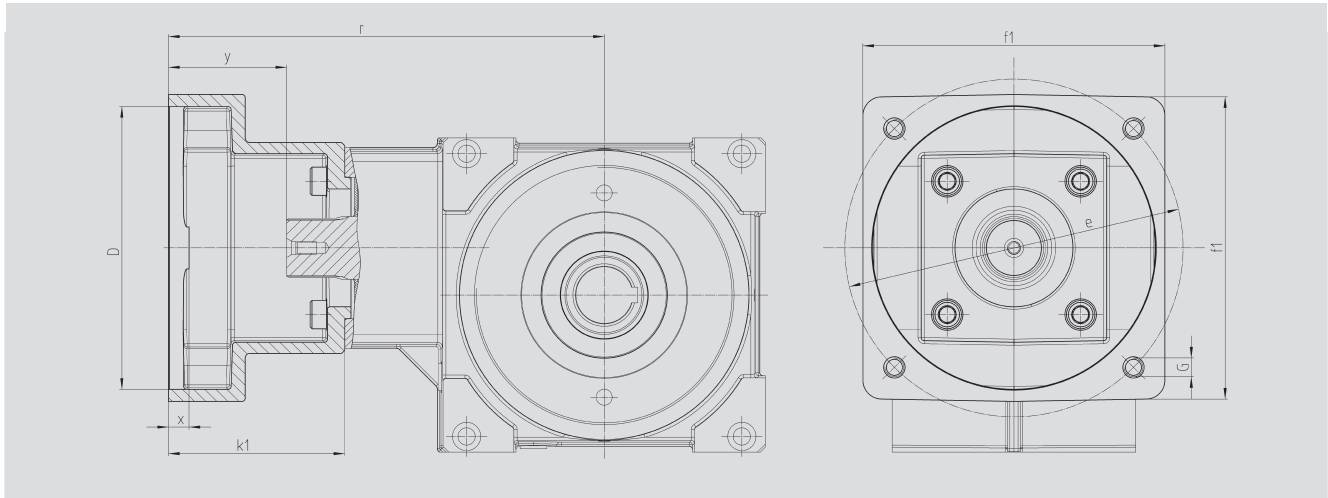
**$J_{red} 10^{-4}$
kg m²**

51 25 005	51 35 005	4.75	23.0	7.800
51 25 007	51 35 007	6.75	23.0	4.620
51 25 009	51 35 009	9.25	23.0	3.270

With food grade oil, order code 51 25 1xx / 51 35 1xx. With ATEX version with food grade oil, order code 51 25 2xx / 51 35 2xx.



Motor Flange



Size 80 mm

Order Code	D ^{G7}	k ₁	r	x	y	f ₁	e	G	kg
65 59 501	110.0	92.0	257.0	8.0	55.0	140	165	M10	2.0
65 59 502	130.0	92.0	257.0	8.0	55.0	140	165	M10	3.0
65 59 503	180.0	122.0	287.0	8.0	85.0	192	215	M12	3.5
65 59 504	180.0	127.0	292.0	8.0	90.0	192	215	M12	3.5
65 59 505	180.0	112.0	277.0	10.0	75.0	192	215	M12	3.0
65 59 506	130.0	112.0	277.0	10.0	75.0	192	215	M12	3.0
65 59 507	130.0	112.0	277.0	10.0	75.0	140	165	M10	4.5
65 59 508	110.0	90.0	255.0	8.0	53.0	140	145	M8	2.0
65 59 509	110.0	108.5	273.5	8.0	71.5	140	145	M8	2.5
65 59 510	114.3	129.5	294.5	8.0	92.5	180	200	M12	5.5
65 59 511	114.3	163.5	328.5	8.0	126.5	180	200	M12	8.0
65 59 512	114.3	105.5	270.5	8.0	68.5	180	200	M12	4.0
65 59 513	110.0	113.5	278.5	8.0	76.5	140	145	M8	2.5

The order should contain gear box 51 25 0xx / 51 35 0xx and flange 65 59 5xx.