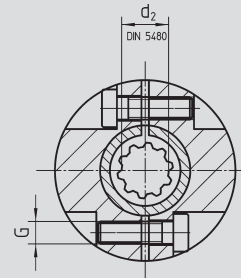
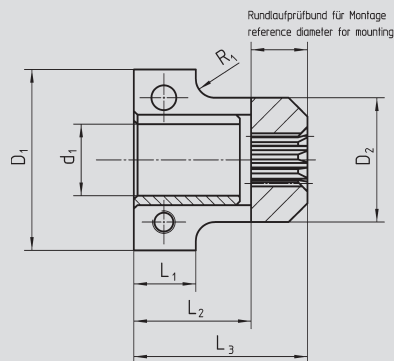




Special Couplings for Motor/Gear Units, rigid model, nitrided, preassembled for motor shafts without key

Bore on gear unit side
low-clearance tooth-hub
profile corresponding to
DIN 5480 for push-fitting

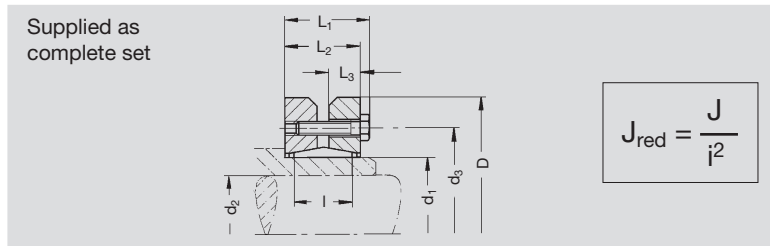


Order Code											J_{red} 10 ⁻⁴ kg m ²	
Coupling	d ₁	d ₂	D ₁	D ₂	L ₁	L ₃	R ₁	G	L ₂			
65 51 008	8	15x1.25x10	36	23	14.0	46.0	5	M5	31.2		0.236	0.2
65 51 009	9	15x1.25x10	36	23	14.0	46.0	5	M5	31.2		0.246	0.2
65 51 010	10	15x1.25x10	36	23	14.0	46.0	5	M5	31.2		0.244	0.2
65 51 011	11	15x1.25x10	36	23	14.0	46.0	5	M5	31.2		0.243	0.2
65 51 014	14	15x1.25x10	36	23	14.0	46.0	5	M5	31.2		0.234	0.2
65 51 016	16	15x1.25x10	36	23	14.0	46.0	5	M5	31.2		0.225	0.2
65 53 019	19	15x1.25x10	48	33	16.5	46.0	5	M6	31.2		0.704	0.3
65 53 020	20	15x1.25x10	48	33	16.5	46.0	5	M6	31.2		0.704	0.3
65 53 022	22	15x1.25x10	48	33	16.5	46.0	5	M6	31.2		0.704	0.3
65 53 024	24	15x1.25x10	48	33	16.5	46.0	5	M6	31.2		0.647	0.2
65 53 025	25	15x1.25x10	64	51	18.0	55.5	5	M8	41.5		5.946	1.1
65 53 028	28	15x1.25x10	64	51	18.0	55.5	5	M8	41.5		5.871	1.1
65 53 032	32	15x1.25x10	64	51	18.0	55.5	5	M8	41.5		4.158	0.8
65 53 035	35	15x1.25x10	78	51	18.0	55.5	5	M8	41.5		5.605	1.0
65 53 038	38	15x1.25x10	78	51	18.0	55.5	5	M8	41.5		5.432	0.9
65 54 009	9	25x1.25x18	49	35	17.0	68.0	5	M6	43.5		2.306	0.5
65 54 010	10	25x1.25x18	49	35	17.0	68.0	5	M6	43.5		2.300	0.5
65 54 011	11	25x1.25x18	49	35	17.0	68.0	5	M6	43.5		2.381	0.5
65 54 014	14	25x1.25x18	49	35	17.0	68.0	5	M6	43.5		1.161	0.5
65 54 015	15	25x1.25x18	49	35	17.0	68.0	5	M6	43.5		2.328	0.5
65 54 016	16	25x1.25x18	49	35	17.0	68.0	5	M6	43.5		1.161	0.5
65 54 019	19	25x1.25x18	49	35	17.0	68.0	5	M6	43.5		1.112	0.4
65 54 020	20	25x1.25x18	49	35	17.0	68.0	5	M6	43.5		2.268	0.5
65 54 022	22	25x1.25x18	49	35	17.0	68.0	5	M6	43.5		2.179	0.4
65 54 024	24	25x1.25x18	49	35	17.0	68.0	5	M6	43.5		1.007	0.4
65 54 025	25	25x1.25x18	64	51	18.0	68.0	5	M8	43.5		8.165	1.2
65 54 028	28	25x1.25x18	64	51	18.0	68.0	5	M8	43.5		8.061	1.2
65 54 032	32	25x1.25x18	64	51	18.0	68.0	5	M8	43.5		7.751	1.2
65 54 035	35	25x1.25x18	78	51	18.0	68.0	5	M8	43.5		7.690	1.1
65 54 038	38	25x1.25x18	78	51	18.0	68.0	5	M8	43.5		7.348	1.1
65 54 042	42	25x1.25x18	78	51	18.0	65.5	5	M8	43.5		6.595	1.1
65 55 014	14	38x1.25x29	64	51	18.0	72.5	5	M8	41.5		8.056	1.2
65 55 016	16	38x1.25x29	64	51	18.0	72.5	5	M8	41.5		8.029	1.2
65 55 019	19	38x1.25x29	64	51	18.0	72.5	5	M8	41.5		7.978	1.2
65 55 020	20	38x1.25x29	64	51	18.0	72.5	5	M8	41.5		7.945	1.2
65 55 022	22	38x1.25x29	64	51	18.0	72.5	5	M8	41.5		7.911	1.2
65 55 024	24	38x1.25x29	64	51	18.0	72.5	5	M8	41.5		7.860	1.2
65 55 025	25	38x1.25x29	64	51	18.0	72.5	5	M8	41.5		7.818	1.1
65 55 028	28	38x1.25x29	64	51	18.0	72.5	5	M8	41.5		8.105	1.3
65 55 032	32	38x1.25x29	64	51	18.0	72.5	5	M8	41.5		7.863	1.2
65 55 035	35	38x1.25x29	78	51	18.0	72.5	5	M8	41.5		7.610	1.1
65 55 038	38	38x1.25x29	78	51	18.0	72.5	5	M8	41.5		7.284	1.0
65 55 042	42	38x1.25x29	78	51	18.0	70.5	5	M8	41.5		6.547	1.0

Couplings on page GA-10 can be used as well.



Shrink-Disk Clamping Sets for Output Drive Shafts of gear series 59 1. ...



Order Code	a ₀ mm	T _{2max} Nm	d ₁	d ₂	d ₃	D	L ₁	L ₂	L ₃	l	G	J 10 ⁻⁴ kg m ²	kg
80 81 024	32	270	24	20	36	50	23.0	19.5	7.80	14.0	6 x M5	0.780	0.2
80 83 030	50	400	30	25	44	60	25.0	21.5	9.00	16.0	7 x M5	1.756	0.3
80 84 036	63	540	36	28	52	72	27.5	23.5	10.00	18.0	5 x M6	4.029	0.4
80 85 050	80	1180	50	36	70	90	31.5	27.5	12.00	22.5	9 x M6	11.322	0.8
80 86 062	100	2300	62	48	86	110	34.5	30.5	14.00	23.0	12 x M6	27.137	1.3