



Center Distance

$a_o = 80 \text{ mm}$

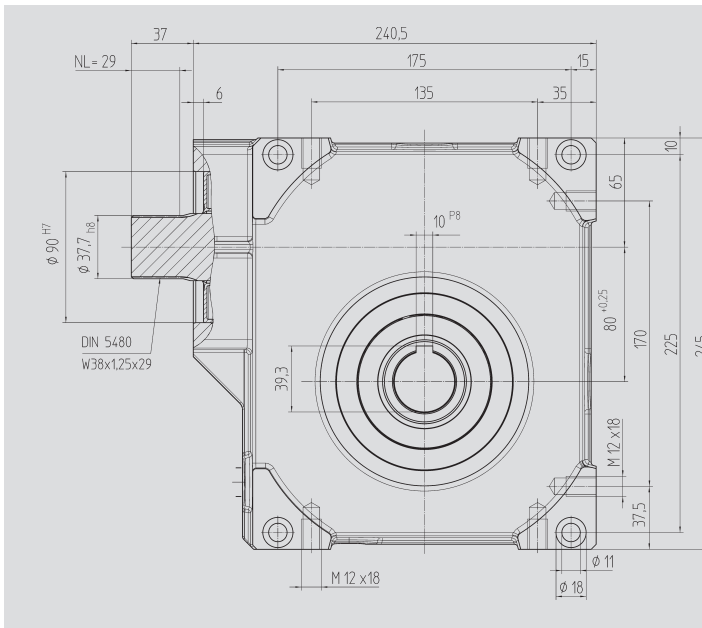


Fig. 1 Output shaft with key connection

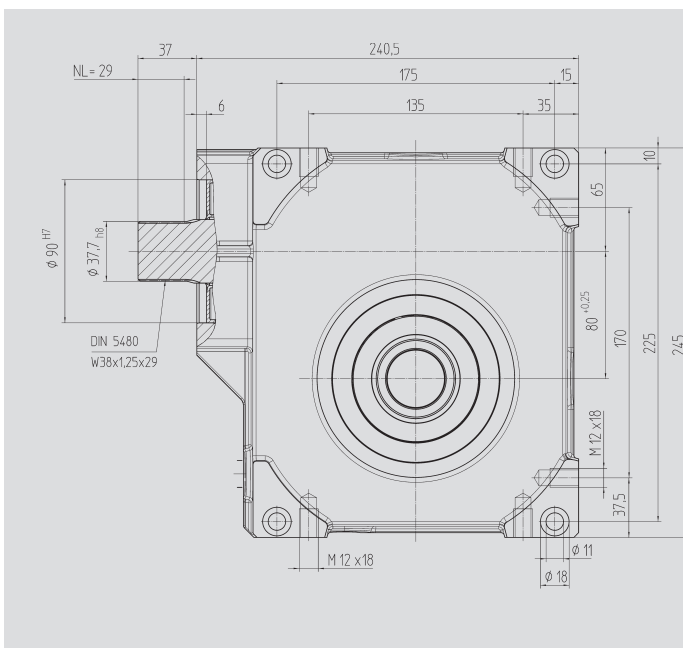
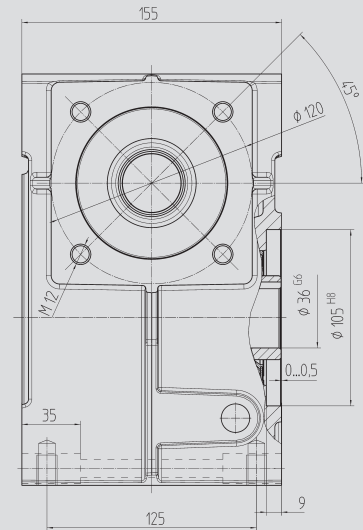
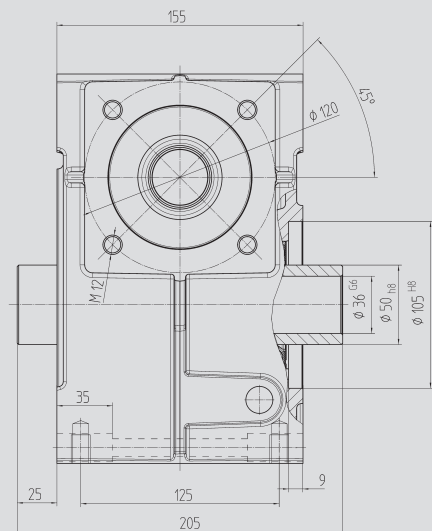


Fig. 2 Output shaft for clamp connection 80 85 050



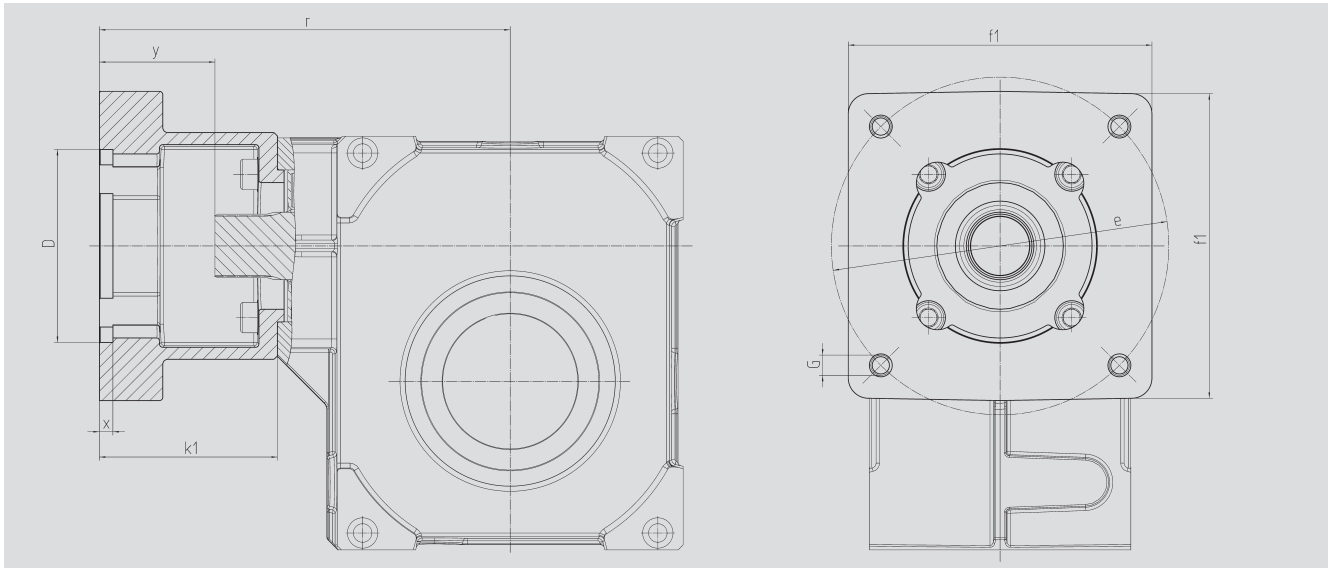
| Order Code Fig. 1 | Fig. 2 | Ratio i | kg | $J_{red} 10^{-4}$ kg m ² |
|----------------------|-----------|---------|----|--|
| 59 05 005 | 59 15 005 | 4.75 | 22 | 9.6180 |
| 59 05 007 | 59 15 007 | 6.75 | 22 | 6.0910 |
| 59 05 009 | 59 15 009 | 9.25 | 22 | 4.7650 |
| 59 05 015 | 59 15 015 | 14.50 | 22 | 5.3080 |
| 59 05 020 | 59 15 020 | 19.50 | 22 | 3.9350 |
| 59 05 029 | 59 15 029 | 29.00 | 22 | 4.0500 |
| 59 05 039 | 59 15 039 | 39.00 | 22 | 4.1800 |
| 59 05 052 | 59 15 052 | 52.00 | 22 | 3.7140 |

With food grade oil, order code 59 05 1xx / 59 15 1xx

With ATEX version with food grade oil, order code 59 05 2xx / 59 15 2xx




Motor Flange



Center Distance

$a_o = 80 \text{ mm}$

| Order Code | D ^{G7} | k ₁ | r | x | y | f ₁ | e | G |  kg |
|------------|-----------------|----------------|-------|------|-------|----------------|-----|-----|---|
| 65 59 501 | 110.0 | 92.0 | 230.0 | 8.0 | 55.0 | 140 | 165 | M10 | 2.00 |
| 65 59 502 | 130.0 | 92.0 | 230.0 | 8.0 | 55.0 | 140 | 165 | M10 | 1.90 |
| 65 59 503 | 180.0 | 122.0 | 260.0 | 8.0 | 85.0 | 192 | 215 | M12 | 3.40 |
| 65 59 504 | 180.0 | 127.0 | 265.0 | 8.0 | 90.0 | 192 | 215 | M12 | 3.80 |
| 65 59 505 | 180.0 | 112.0 | 250.0 | 10.0 | 75.0 | 192 | 215 | M12 | 2.70 |
| 65 59 506 | 130.0 | 112.0 | 250.0 | 10.0 | 75.0 | 192 | 215 | M12 | 3.00 |
| 65 59 507 | 130.0 | 112.0 | 250.0 | 10.0 | 75.0 | 140 | 165 | M10 | 2.50 |
| 65 59 508 | 110.0 | 90.0 | 228.0 | 8.0 | 53.0 | 140 | 145 | M8 | 2.00 |
| 65 59 509 | 110.0 | 108.5 | 246.5 | 8.0 | 71.5 | 140 | 145 | M8 | 2.50 |
| 65 59 510 | 114.3 | 129.5 | 267.5 | 8.0 | 92.5 | 180 | 200 | M12 | 5.00 |
| 65 59 511 | 114.3 | 163.5 | 301.5 | 8.0 | 126.5 | 180 | 200 | M12 | 4.20 |
| 65 59 512 | 114.3 | 105.5 | 243.5 | 8.0 | 68.5 | 180 | 200 | M12 | 3.50 |
| 65 59 513 | 110.0 | 113.5 | 251.5 | 8.0 | 76.5 | 140 | 145 | M8 | 2.70 |

The order should contain gear box 59 05 0xx / 59 15 0xx and flange 65 59 5xx.