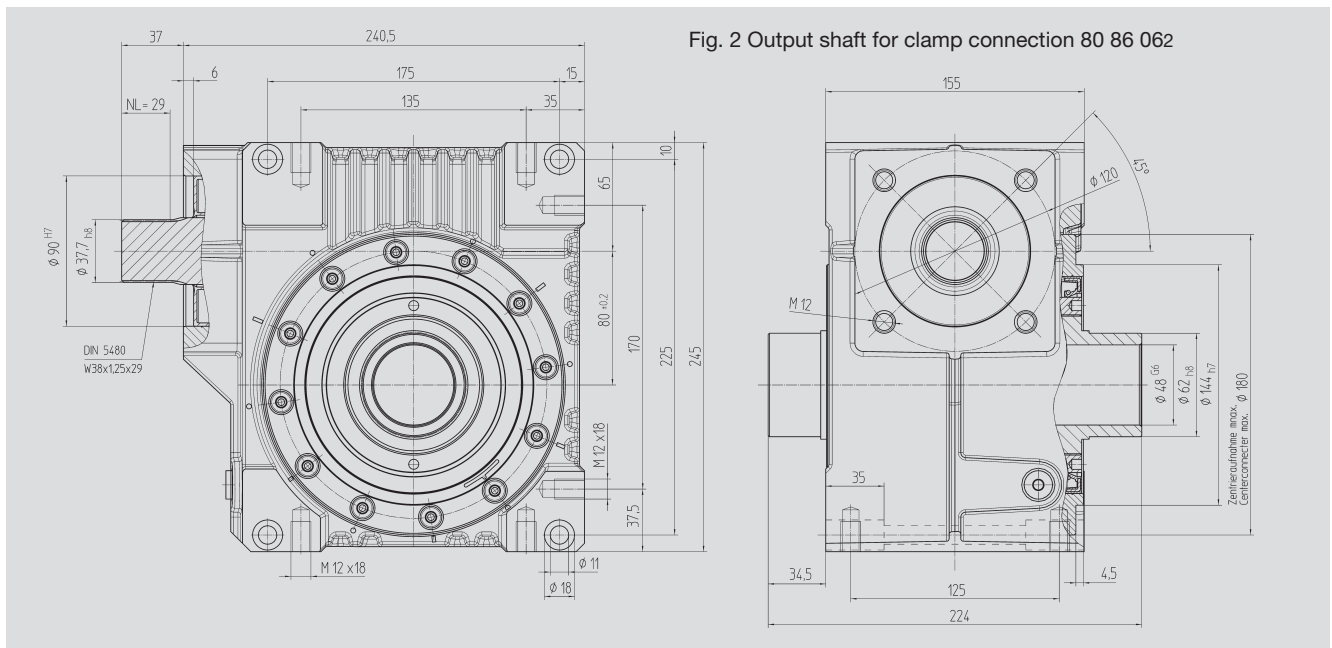
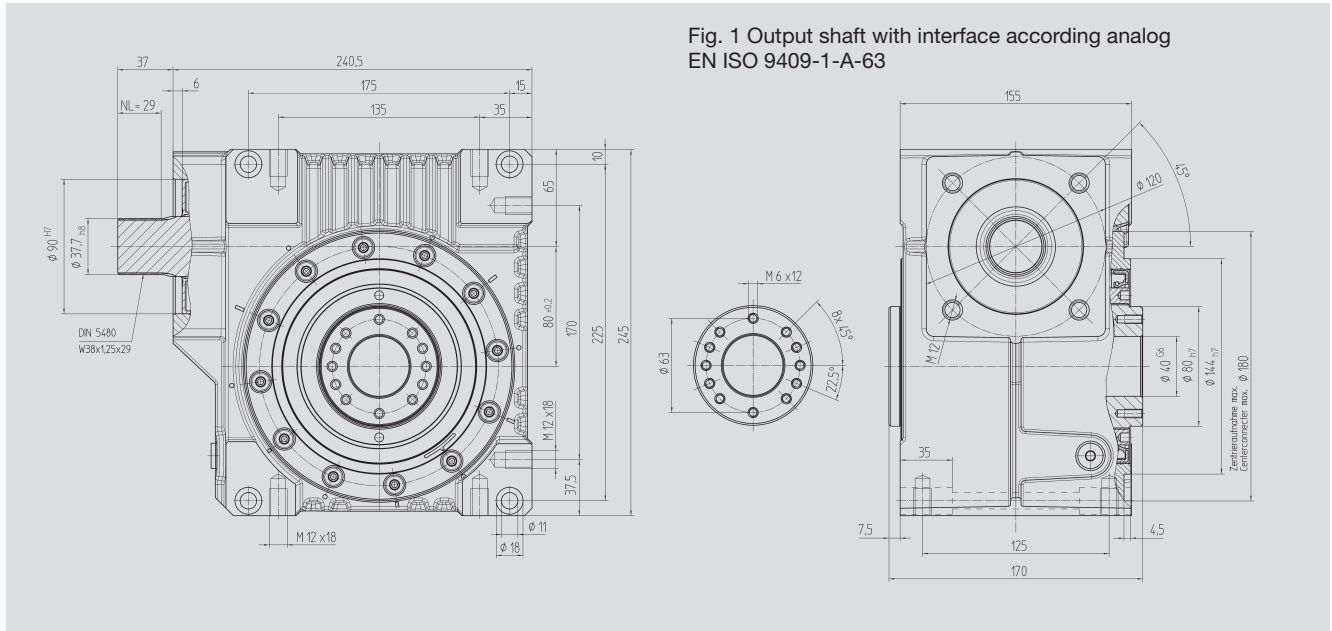




Center Distance

$$a_o = 80 \text{ mm}$$



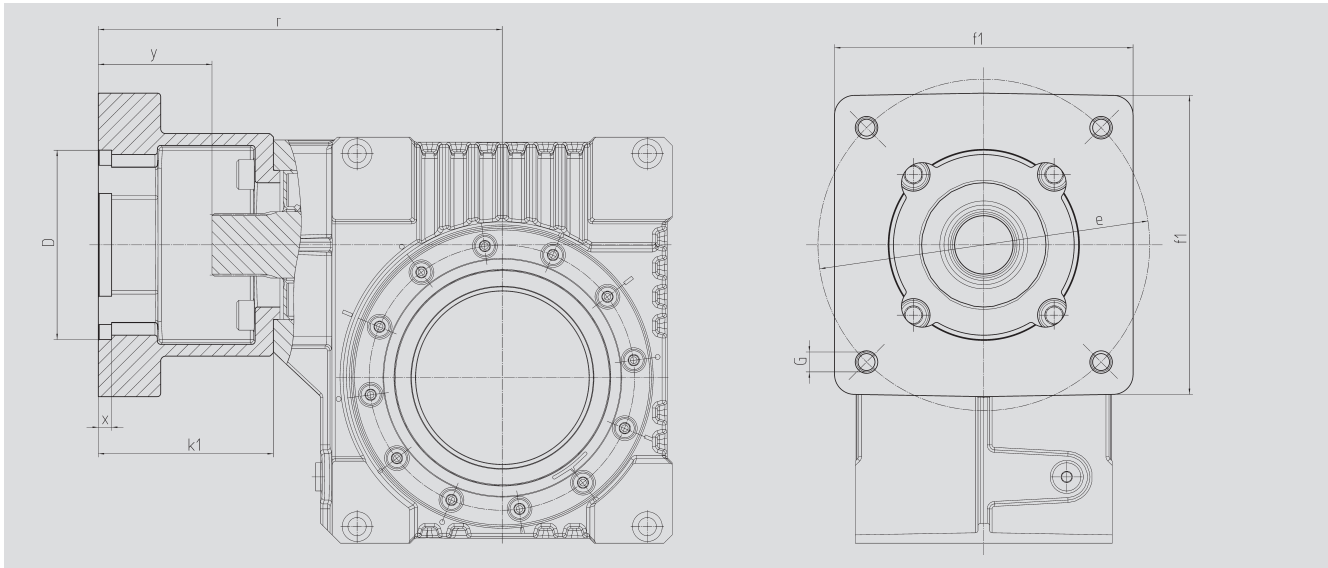
Order Code Fig. 1	Fig. 2	Ratio i	kg	J _{red} 10 ⁻⁴ kg m ²
98 05 005	98 15 005	4.75	23	9.6180
98 05 007	98 15 007	6.75	23	6.0910
98 05 009	98 15 009	9.25	23	4.7650
98 05 015	98 15 015	14.50	23	5.3080
98 05 020	98 15 020	19.50	23	3.9350
98 05 029	98 15 029	29.00	23	4.0500
98 05 039	98 15 039	39.00	23	4.1800
98 05 052	98 15 052	52.00	23	3.7140

With food grade oil, order code 98 05 1xx / 98 15 xx

With ATEX version with food grade oil, order code 98 05 2xx / 98 15 2xx



Motor Flange



Center Distance

$a_o = 80 \text{ mm}$

Order Code	D ^{G7}	k ₁	r	x	y	f ₁	e	G	kg
65 59 501	110.0	92.0	230.0	8.0	55.0	140	165	M10	2.00
65 59 502	130.0	92.0	230.0	8.0	55.0	140	165	M10	1.90
65 59 503	180.0	122.0	260.0	8.0	85.0	192	215	M12	3.40
65 59 504	180.0	127.0	265.0	8.0	90.0	192	215	M12	3.80
65 59 505	180.0	112.0	250.0	10.0	75.0	192	215	M12	2.70
65 59 506	130.0	112.0	250.0	10.0	75.0	192	215	M12	3.00
65 59 507	130.0	112.0	250.0	10.0	75.0	140	165	M10	2.50
65 59 508	110.0	90.0	228.0	8.0	53.0	140	145	M8	2.00
65 59 509	110.0	108.5	246.5	8.0	71.5	140	145	M8	2.50
65 59 510	114.3	129.5	267.5	8.0	92.5	180	200	M12	5.00
65 59 511	114.3	163.5	301.5	8.0	126.5	180	200	M12	4.20
65 59 512	114.3	105.5	243.5	8.0	68.5	180	200	M12	3.50
65 59 513	110.0	113.5	251.5	8.0	76.5	140	145	M8	2.70

The order should contain gear box 98 05 0xx / 98 15 0xx and flange 65 59 5xx.