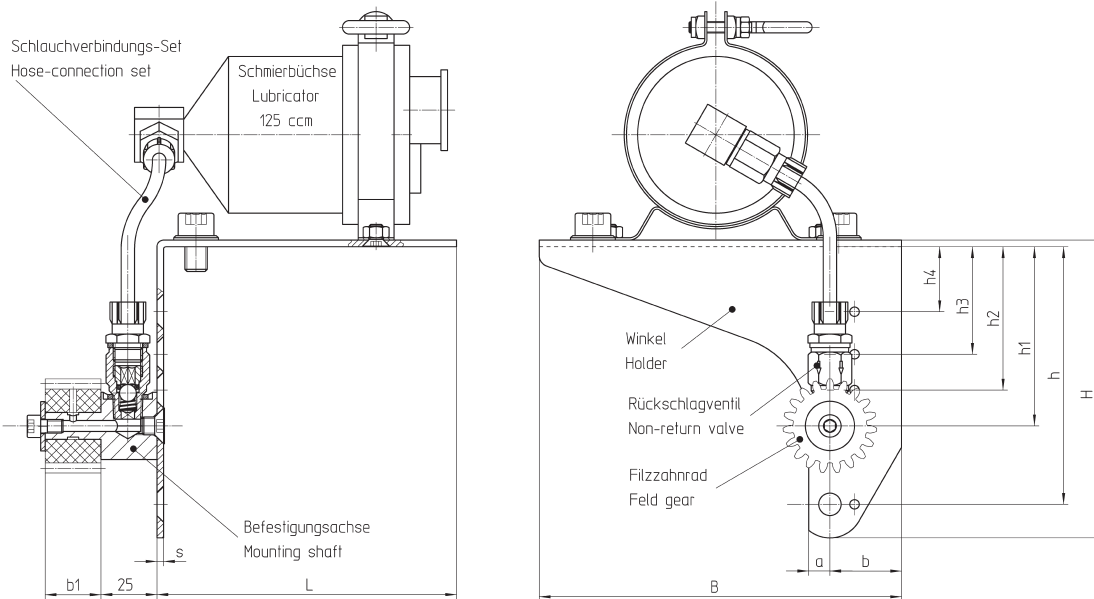




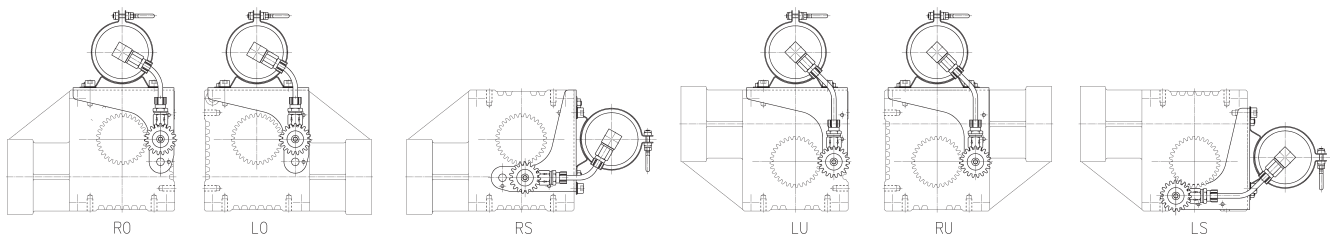
### Lubrication Unit for HT Servo-Drive System with Output Shaft for Clamp Connection



Order Code	m	z	Tooth System	h	h1	h2	h3	h4	b1	b2	s	a	b	H	B	L	kg
<b>a<sub>0</sub> = 50</b>				95	65	49	33	17									
65 83 192	2	19	straight	LU, RU	RO, LO, RS, LS				25	37	3	12	18	113	140	104	1.40
65 83 182	2	18	helical	LU, RU	RO, LO, RS, LS				25	37	3	12	18	113	140	104	1.40
65 83 193	3	19	straight	RS	LU, RU		RO, LO, LS		30	36	3	15	18	113	140	104	1.44
65 83 183	3	18	helical	RS	LU, RU		RO, LO, LS		30	36	3	15	18	113	140	104	1.44
65 83 194	4	19	straight			LU, RU	RS	RO, LO, LS	40	32	3	15	18	113	140	104	1.54
65 83 184	4	18	helical			LU, RU	RS	RO, LO, LS	40	32	3	15	18	113	140	104	1.54
<b>a<sub>0</sub> = 63</b>				115	80	64	48	29									
65 84 193	3	19	straight	LU, RU	RO, LO, RS	LS			30	36	3	9	32	133	162	134	1.90
65 84 183	3	18	helical	LU, RU	RO, LO, RS	LS			30	36	3	9	32	133	162	134	1.90
65 84 194	4	19	straight			LU, RU, RS	RO, LO, LS		40	32	3	9	32	133	162	134	2.00
65 84 184	4	18	helical			LU, RU, RS	RO, LO, LS		40	32	3	9	32	133	162	134	2.00
<b>a<sub>0</sub> = 80</b>				130	103	85	57	36									
65 85 194	4	19	straight	LU, RU	LU*, RU*	RO, LO, RS, LS		RO*, LO*, RS*, LS*	40	32	3	9	42	148	198	159	2.50
65 85 184	4	18	helical	LU, RU	LU*, RU*	RO, LO, RS, LS		RO*, LO*, RS*, LS*	40	32	3	9	42	148	198	159	2.50
65 85 185	5	18	straight		LU, RU		RO, LO, RS, LS		50	35	3	9	42	148	198	159	2.70
65 85 175	5	17	helical		LU, RU		RO, LO, RS, LS		50	35	3	9	42	148	198	159	2.70
65 85 186	6	18	straight		LU, RU			RO, LO, RS, LS	60	37	3	9	42	148	198	159	2.80
65 85 176	6	17	helical		LU, RU			RO, LO, RS, LS	60	37	3	9	42	148	198	159	2.80
<b>a<sub>0</sub> = 100</b>				140	102	84	52	32									
65 86 185	5	18	straight	LU, RU	RO, LO, RS, LS				50	35	4	10	44	169	230	182	3.30
65 86 175	5	17	helical	LU, RU	RO, LO, RS, LS				50	35	4	10	44	169	230	182	3.30
65 86 186	6	18	straight		LU, RU		RO, LO, RS, LS		60	37	4	10	44	169	230	182	3.50
65 86 176	6	17	helical		LU, RU		RO, LO, RS, LS		60	37	4	10	44	169	230	182	3.50
65 86 188	8	18	straight		LU, RU		RS	RO, LO, LS	80	38	4	10	44	169	230	182	4.30
65 86 178	8	17	helical		LU, RU		RS	RO, LO, LS	80	38	4	10	44	169	230	182	4.30

\* For pinion with z = 30

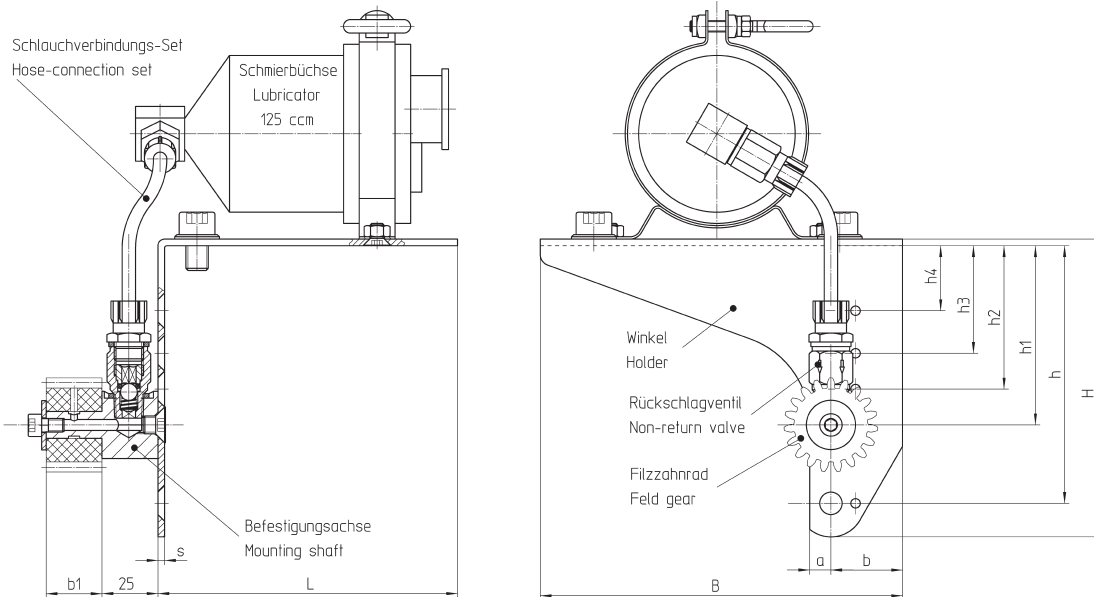
### Units Mounting Possibilities



Ordering Example: a = 80; m = 4 helical tooth system, Fig. LO ⇒ 65 85 184 (Felt gear assembled according to the dimension „h2 = 85“ of the mounting surface).



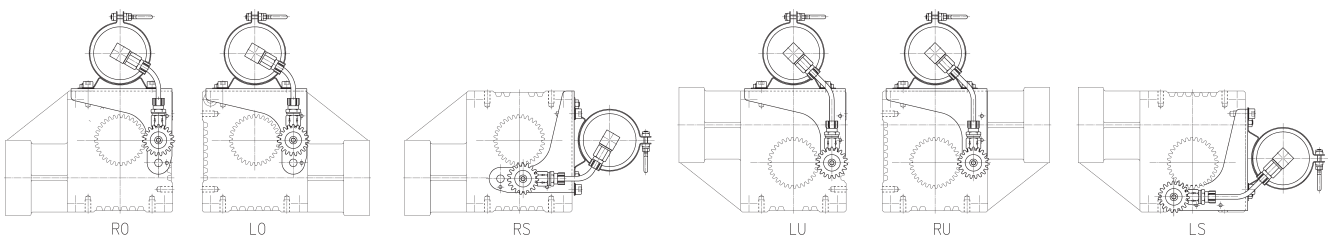
### Lubrication Unit for HP /E /B Servo-Drive System



Order Code	m	z	Tooth System	h	h1	h2	h3	h4	b1	s	a	b	H	B	L	kg
<b>a<sub>o</sub> = 50</b>				95	65	33	-	-								
65 93 192	2	19	straight	LU, RU, LS	RO, LO, RS				25	3	15	18	113	134	104	1.40
65 93 182	2	18	helical	LU, RU, LS	RO, LO, RS				25	3	15	18	113	134	104	1.40
65 93 193	3	19	straight	RS	LU, RU	RO, LO, LS			30	3	15	18	113	134	104	1.44
65 93 183	3	18	helical	RS	LU, RU	RO, LO, LS			30	3	15	18	113	134	104	1.44
<b>a<sub>o</sub> = 63</b>				115	80	64	48	29								
65 94 192	2	19	straight	LU, RU	RO, LO, RS	LS			25	3	9	32	133	162	134	1.72
65 94 182	2	18	helical	LU, RU	RO, LO, RS	LS			25	3	9	32	133	162	134	1.72
65 94 193	3	19	straight	RS	LU, RU		RO, LO, LS		30	3	9	32	133	162	134	1.79
65 94 183	3	18	helical	RS	LU, RU		RO, LO, LS		30	3	9	32	133	162	134	1.79
65 94 194	4	19	straight			LU, RU	RS	RO, LO, LS	40	3	9	32	133	162	134	1.90
65 94 184	4	18	helical			LU, RU	RS	RO, LO, LS	40	3	9	32	133	162	134	1.90
<b>a<sub>o</sub> = 80</b>				130	103	85	57	-								
65 95 193	3	19	straight	LU, RU		RO, LO, RS, LS			30	3	9	42	148	198	159	2.39
65 95 183	3	18	helical	LU, RU		RO, LO, RS, LS			30	3	9	42	148	198	159	2.39
65 95 194	4	19	straight		LU, RU	RS	RO, LO, LS		40	3	9	42	148	198	159	2.50
65 95 184	4	18	helical		LU, RU	RS	RO, LO, LS		40	3	9	42	148	198	159	2.50
<b>a<sub>o</sub> = 100</b>				140	102	84	52	-								
65 96 194	4	19	straight	LU, RU, RS	RO, LO, LS, LU*, RU*	RS*	RO*, LO*, LS*		40	4	11	44	169	230	182	2.60
65 96 184	4	18	helical	LU, RU, RS	RO, LO, LS, LU*, RU*	RS*	RO*, LO*, LS*		40	4	11	44	169	230	182	2.60
65 96 185	5	18	straight	LU, RU	RS	RO, LO, LS			50	4	11	44	169	230	182	3.30
65 96 175	5	17	helical	LU, RU	RS	RO, LO, LS			50	4	11	44	169	230	182	3.30
<b>a<sub>o</sub> = 125</b>				198	171	128	102	-								
65 97 185	5	18	straight	LU, RU		RO, LO, RS, LS			50	4	15	63	227	290	225	3.73
65 97 175	5	17	helical	LU, RU		RO, LO, RS, LS			50	4	15	63	227	290	225	3.73
65 97 186	6	18	straight	RS	LU, RU	RO, LO	LS		60	4	15	63	227	290	225	3.88
65 97 176	6	17	helical	RS	LU, RU	RO, LO	LS		60	4	15	63	227	290	225	3.88

\* for pinion with z = 30

### Units Mounting Possibilities



Ordering example: a = 80; m = 4 helical tooth system, Fig. LO ⇒ 65 95 184 (Felt gear assembled according to the dimension „h3 = 57“ of the mounting surface).