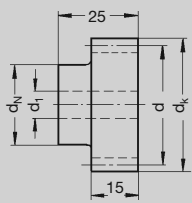




### Straight Tooth System, prebored




**Soft**

C45,  
1.0503

Gearing Grade

**8 e 25**

Fig. 1
Fig. 2

Order Code	Fig.	N° of Teeth z	d	d <sub>k</sub>	d <sub>1</sub>	d <sub>N</sub>	d <sub>3</sub>	s	kg
21 10 012	1	12	12.0	14.0	6	9	–	–	0.01
21 10 013	1	13	13.0	15.0	6	9	–	–	0.01
21 10 014	1	14	14.0	16.0	6	11	–	–	0.02
21 10 015	1	15	15.0	17.0	6	12	–	–	0.02
21 10 016	1	16	16.0	18.0	6	12	–	–	0.03
21 10 017	1	17	17.0	19.0	6	14	–	–	0.03
21 10 018	1	18	18.0	20.0	6	15	–	–	0.04
21 10 019	1	19	19.0	21.0	6	15	–	–	0.04
21 10 020	1	20	20.0	22.0	6	16	–	–	0.05
21 10 021	1	21	21.0	23.0	6	16	–	–	0.05
21 10 022	1	22	22.0	24.0	6	18	–	–	0.06
21 10 023	1	23	23.0	25.0	6	18	–	–	0.06
21 10 024	1	24	24.0	26.0	9	20	–	–	0.07
21 10 025	1	25	25.0	27.0	9	20	–	–	0.07
21 10 030	1	30	30.0	32.0	9	20	–	–	0.10
21 10 035	1	35	35.0	37.0	9	25	–	–	0.14
21 10 038	1	38	38.0	40.0	9	25	–	–	0.17
21 10 040	1	40	40.0	42.0	9	25	–	–	0.18
21 10 045	1	45	45.0	47.0	9	30	–	–	0.25
21 10 048	1	48	48.0	50.0	9	30	–	–	0.26
21 10 050	1	50	50.0	52.0	9	30	–	–	0.28
21 10 057	1	57	57.0	59.0	9	40	–	–	0.37
21 10 060	1	60	60.0	62.0	9	40	–	–	0.40
23 10 076	2	76	76.0	78.0	10	–	–	–	0.55
23 10 080	2	80	80.0	82.0	10	–	–	–	0.60
23 10 095	2	95	95.0	97.0	10	–	–	–	0.85
23 10 100	2	100	100.0	102.0	10	–	–	–	0.95
23 10 114	2	114	114.0	116.0	10	–	–	–	1.20

Further finishing (turning bores, keywaying, threading, etc.) is possible within short time.

Highlighted items will become obsolete in the future. Please check with the factory for delivery information.





### Straight Tooth System, prebored

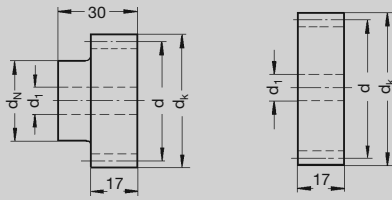


Fig. 1

Fig. 2

<b>Soft</b>
C45, 1.0503
Gearing Grade
<b>8 e 25</b>

Order Code	Fig.	N° of Teeth z	d	dk	d <sub>1</sub>	d <sub>N</sub>	d <sub>3</sub>	s	kg
21 15 012	1	12	18.0	21.0	6	14	–	–	0.03
21 15 013	1	13	19.5	22.5	6	14	–	–	0.03
21 15 014	1	14	21.0	24.0	6	16	–	–	0.04
21 15 015	1	15	22.5	25.5	6	18	–	–	0.05
21 15 016	1	16	24.0	27.0	6	18	–	–	0.07
21 15 017	1	17	25.5	28.5	9	20	–	–	0.08
21 15 018	1	18	27.0	30.0	9	20	–	–	0.09
21 15 019	1	19	28.5	31.5	9	20	–	–	0.10
21 15 020	1	20	30.0	33.0	9	25	–	–	0.13
21 15 021	1	21	31.5	34.5	9	25	–	–	0.14
21 15 022	1	22	33.0	36.0	9	25	–	–	0.15
21 15 023	1	23	34.5	37.5	9	25	–	–	0.16
21 15 024	1	24	36.0	39.0	9	25	–	–	0.17
21 15 025	1	25	37.5	40.5	9	25	–	–	0.18
21 15 030	1	30	45.0	48.0	9	30	–	–	0.23
21 15 035	1	35	52.5	55.5	9	40	–	–	0.40
21 15 038	1	38	57.0	60.0	9	40	–	–	0.40
21 15 040	1	40	60.0	63.0	9	40	–	–	0.46
21 15 045	1	45	67.5	70.5	12	50	–	–	0.61
21 15 048	1	48	72.0	75.0	12	50	–	–	0.70
21 15 050	1	50	75.0	78.0	12	50	–	–	0.75
21 15 057	1	57	85.5	88.5	12	60	–	–	1.00
21 15 060	1	60	90.0	93.0	12	60	–	–	1.16
23 15 076	2	76	114.0	117.0	16	–	–	–	1.40
23 15 080	2	80	120.0	123.0	16	–	–	–	1.50
23 15 595	2	95	142.5	145.5	20	–	–	–	2.10

Further finishing (turning bores, keywaying, threading, etc.) is possible within short time.

Highlighted items will become obsolete in the future. Please check with the factory for delivery information.





### Straight Tooth System, prebored

**Fig. 1**

**Fig. 2**

**Soft**

C45,  
1.0503

Gearing Grade

**8 e 25**

Order Code	Fig.	N° of Teeth z	d	d <sub>k</sub>	d <sub>1</sub>	d <sub>N</sub>	d <sub>3</sub>	s	kg
21 20 012	1	12	24.0	28.0	9	18.0	–	–	0.07
21 20 013	1	13	26.0	30.0	9	19.0	–	–	0.12
21 20 014	1	14	28.0	32.0	9	19.0	–	–	0.14
21 20 015	1	15	30.0	34.0	9	24.5	–	–	0.15
21 20 016	1	16	32.0	36.0	9	25.0	–	–	0.17
21 20 017	1	17	34.0	38.0	9	25.0	–	–	0.18
21 20 018	1	18	36.0	40.0	9	25.0	–	–	0.19
21 20 019	1	19	38.0	42.0	9	25.0	–	–	0.20
21 20 020	1	20	40.0	44.0	9	30.0	–	–	0.22
21 20 021	1	21	42.0	46.0	9	30.0	–	–	0.26
21 20 022	1	22	44.0	48.0	9	30.0	–	–	0.27
21 20 023	1	23	46.0	50.0	9	30.0	–	–	0.28
21 20 024	1	24	48.0	52.0	12	35.0	–	–	0.36
21 20 025	1	25	50.0	54.0	12	35.0	–	–	0.39
21 20 028	1	28	56.0	60.0	12	40.0	–	–	0.45
21 20 030	1	30	60.0	64.0	12	40.0	–	–	0.50
21 20 032	1	32	64.0	68.0	12	40.0	–	–	0.60
21 20 035	1	35	70.0	74.0	12	50.0	–	–	0.67
21 20 036	1	36	72.0	76.0	12	50.0	–	–	0.85
21 20 038	1	38	76.0	80.0	12	50.0	–	–	0.90
21 20 040	1	40	80.0	84.0	12	50.0	–	–	0.95
21 20 045	1	45	90.0	94.0	12	60.0	–	–	1.25
21 20 048	1	48	96.0	100.0	15	70.0	–	–	1.50
21 20 050	1	50	100.0	104.0	15	70.0	–	–	1.60
21 20 056	1	56	112.0	116.0	15	70.0	–	–	1.90
21 20 057	1	57	114.0	118.0	15	70.0	–	–	2.00
21 20 060	1	60	120.0	124.0	15	70.0	–	–	2.40
<b>23 20 576</b>	2	76	152.0	156.0	20	–	–	–	2.80
<b>23 20 580</b>	2	80	160.0	164.0	20	–	–	–	3.10
<b>23 20 595</b>	2	95	190.0	194.0	20	–	–	–	4.40

Further finishing (turning bores, keywaying, threading, etc.) is possible within short time.

Highlighted items will become obsolete in the future. Please check with the factory for delivery information.





### Straight Tooth System, prebored

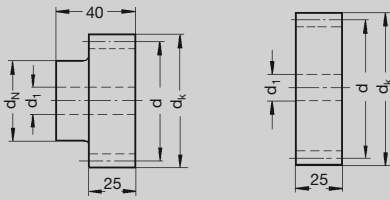


Fig. 1

Fig. 2

<b>Soft</b>
C45, 1.0503
Gearing Grade
<b>8 e 25</b>

Order Code	Fig.	N° of Teeth z	d	d <sub>k</sub>	d <sub>1</sub>	d <sub>N</sub>	d <sub>3</sub>	s	kg
21 25 012	1	12	30.0	35.0	9	20.0	–	–	0.16
21 25 013	1	13	32.5	37.5	9	20.0	–	–	0.18
21 25 014	1	14	35.0	40.0	9	25.0	–	–	0.22
21 25 015	1	15	37.5	42.5	9	25.0	–	–	0.25
21 25 016	1	16	40.0	45.0	9	30.0	–	–	0.31
21 25 017	1	17	42.5	47.5	9	30.0	–	–	0.35
21 25 018	1	18	45.0	50.0	9	35.0	–	–	0.41
21 25 019	1	19	47.5	52.5	12	35.0	–	–	0.43
21 25 020	1	20	50.0	55.0	12	35.0	–	–	0.47
21 25 021	1	21	52.5	57.5	12	35.0	–	–	0.50
21 25 022	1	22	55.0	60.0	12	40.0	–	–	0.53
21 25 023	1	23	57.5	62.5	12	40.0	–	–	0.62
21 25 024	1	24	60.0	65.0	12	40.0	–	–	0.66
21 25 025	1	25	62.5	67.5	12	45.0	–	–	0.75
21 25 030	1	30	75.0	80.0	12	50.0	–	–	0.97
21 25 035	1	35	87.5	92.5	12	60.0	–	–	1.49
21 25 038	1	38	95.0	100.0	12	60.0	–	–	1.72
21 25 040	1	40	100.0	105.0	12	70.0	–	–	1.84
21 25 045	1	45	112.5	117.5	15	70.0	–	–	2.36
21 25 048	1	48	120.0	125.0	15	80.0	–	–	2.75
21 25 050	1	50	125.0	130.0	15	80.0	–	–	2.94
21 25 057	1	57	142.5	147.5	15	90.0	–	–	3.67
21 25 060	1	60	150.0	155.0	15	90.0	–	–	4.00
<b>23 25 580</b>	2	80	200.0	205.0	25	–	–	–	6.10

Further finishing (turning bores, keywaying, threading, etc.) is possible within short time.

Highlighted items will become obsolete in the future. Please check with the factory for delivery information.





### Straight Tooth System, prebored

Fig. 1

Fig. 2

**Soft**

C45,  
1.0503

---

Gearing Grade

**8 e 25**

Order Code	Fig.	N° of Teeth z	d	dk	d <sub>1</sub>	d <sub>N</sub>	d <sub>3</sub>	s	kg
21 30 012	1	12	36	42	14	25	–	–	0.25
21 30 013	1	13	39	45	14	25	–	–	0.30
21 30 014	1	14	42	48	14	25	–	–	0.34
21 30 015	1	15	45	51	14	35	–	–	0.41
21 30 016	1	16	48	54	14	35	–	–	0.51
21 30 017	1	17	51	57	14	42	–	–	0.67
21 30 018	1	18	54	60	14	45	–	–	0.70
21 30 019	1	19	57	63	14	45	–	–	0.75
21 30 020	1	20	60	66	14	45	–	–	0.82
21 30 021	1	21	63	69	14	45	–	–	0.89
21 30 022	1	22	66	72	14	50	–	–	1.05
21 30 023	1	23	69	75	14	50	–	–	1.10
21 30 024	1	24	72	78	14	50	–	–	1.20
21 30 025	1	25	75	81	14	60	–	–	1.35
21 30 027	1	27	81	87	14	60	–	–	1.60
21 30 028	1	28	84	90	14	60	–	–	1.70
21 30 030	1	30	90	96	14	60	–	–	1.80
21 30 032	1	32	96	102	14	60	–	–	2.00
21 30 035	1	35	105	111	14	80	–	–	2.70
21 30 036	1	36	108	114	14	80	–	–	2.80
21 30 038	1	38	114	120	14	80	–	–	3.00
21 30 040	1	40	120	126	14	80	–	–	3.30
23 30 545	2	45	135	141	20	–	–	–	3.30
23 30 548	2	48	144	150	20	–	–	–	3.80
23 30 550	2	50	150	156	25	–	–	–	4.10
23 30 552	2	52	156	162	25	–	–	–	4.50
23 30 556	2	56	168	174	25	–	–	–	5.20
23 30 560	2	60	180	186	25	–	–	–	6.00
23 30 576	2	76	228	234	25	–	–	–	9.60
23 30 595	2	95	285	291	25	–	–	–	15.00

Further finishing (turning bores, keywaying, threading, etc.) is possible within short time.

Highlighted items will become obsolete in the future. Please check with the factory for delivery information.





### Straight Tooth System, prebored

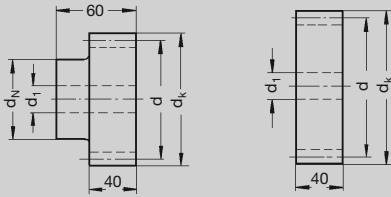


Fig. 1

Fig. 2

<b>Soft</b>
C45, 1.0503
Gearing Grade
<b>8 e 25</b>

Order Code	Fig.	N° of Teeth z	d	d <sub>k</sub>	d <sub>1</sub>	d <sub>N</sub>	d <sub>3</sub>	s	kg
21 40 012	1	12	48	56	16	35	–	–	0.58
21 40 013	1	13	52	60	16	35	–	–	0.72
21 40 014	1	14	56	64	16	45	–	–	0.90
21 40 015	1	15	60	68	16	45	–	–	1.00
21 40 016	1	16	64	72	16	45	–	–	1.10
21 40 017	1	17	68	76	16	50	–	–	1.30
21 40 018	1	18	72	80	16	50	–	–	1.40
21 40 019	1	19	76	84	16	60	–	–	1.70
21 40 020	1	20	80	88	16	60	–	–	1.80
21 40 021	1	21	84	92	16	70	–	–	2.20
21 40 022	1	22	88	96	16	70	–	–	2.50
21 40 023	1	23	92	100	16	75	–	–	2.60
21 40 024	1	24	96	104	16	75	–	–	2.75
21 40 025	1	25	100	108	16	75	–	–	2.90
21 40 030	1	30	120	128	16	75	–	–	4.00
23 40 538	2	38	152	160	25	–	–	–	5.70
23 40 540	2	40	160	168	25	–	–	–	6.30
23 40 545	2	45	180	188	25	–	–	–	8.00
23 40 550	2	50	200	208	25	–	–	–	9.80
23 40 556	2	56	224	232	25	–	–	–	12.30
23 40 560	2	60	240	248	25	–	–	–	14.20
23 40 580	2	80	320	328	25	–	–	–	25.20
23 40 595	2	95	380	388	25	–	–	–	35.60

Further finishing (turning bores, keywaying, threading, etc.) is possible within short time.

Highlighted items will become obsolete in the future. Please check with the factory for delivery information.





### Straight Tooth System, prebored

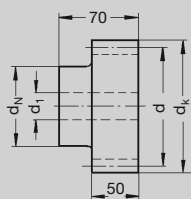


Fig. 1

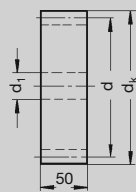



Fig. 2

<b>Soft</b>
C45, 1.0503
Gearing Grade
<b>8 e 25</b>

Order Code	Fig.	N° of Teeth z	d	d <sub>k</sub>	d <sub>1</sub>	d <sub>N</sub>	d <sub>3</sub>	s	 kg
21 50 012	1	12	60	70	20	45	–	–	1.20
21 50 013	1	13	65	75	20	45	–	–	1.38
21 50 014	1	14	70	80	20	55	–	–	1.78
21 50 015	1	15	75	85	20	60	–	–	2.00
21 50 016	1	16	80	90	20	60	–	–	2.10
21 50 017	1	17	85	95	20	70	–	–	2.20
21 50 018	1	18	90	100	20	70	–	–	2.58
21 50 019	1	19	95	105	20	70	–	–	2.80
21 50 020	1	20	100	110	20	70	–	–	3.10
21 50 021	1	21	105	115	20	70	–	–	3.80
21 50 022	1	22	110	120	20	80	–	–	4.30
21 50 023	1	23	115	125	20	80	–	–	4.70
21 50 024	1	24	120	130	20	80	–	–	5.00
21 50 025	1	25	125	135	20	80	–	–	5.40
21 50 030	1	30	150	160	20	90	–	–	7.70
23 50 536	2	36	180	190	30	–	–	–	9.90
23 50 540	2	40	200	210	30	–	–	–	12.30
23 50 550	2	50	250	260	30	–	–	–	19.20
23 50 595	2	95	475	485	30	–	–	–	69.50

Further finishing (turning bores, keywaying, threading, etc.) is possible within short time.

Highlighted items will become obsolete in the future. Please check with the factory for delivery information.





### Module 6, Straight Tooth System, prebored

**Fig. 1**

**Fig. 2**

**Soft**

C45,  
1.0503

---

Gearing Grade

**8 e 25**

Order Code	Fig.	N° of Teeth z	d	dk	d <sub>1</sub>	d <sub>N</sub>	d <sub>3</sub>	s	kg
21 60 015	1	15	90	102	20	60	–	–	3.20
21 60 019	1	19	114	126	20	80	–	–	5.40
21 60 020	1	20	120	132	20	90	–	–	6.00
21 60 021	1	21	126	138	20	90	–	–	6.70
21 60 022	1	22	132	144	20	100	–	–	7.40
21 60 025	1	25	150	162	20	110	–	–	9.60
23 60 530	2	30	180	192	30	–	–	–	11.90
23 60 536	2	36	216	228	30	–	–	–	17.20

Further finishing (turning bores, keywaying, threading, etc.) is possible within short time.

Highlighted items will become obsolete in the future. Please check with the factory for delivery information.

### Module 8, 10 and 12, Straight Tooth System, prebored

**Fig. 1**

**Fig. 2**

**Fig. 3**

**Soft**

C45,  
1.0503

---

Gearing Grade

**8 e 25**

Order Code	Fig.	N° of Teeth z	d	dk	d <sub>1</sub>	d <sub>N</sub>	d <sub>3</sub>	s	kg
<b>Module 8</b>									
21 80 015	1	15	120	136	40	90	–	–	7.70
21 80 018	1	18	144	160	40	100	–	–	9.90
21 80 020	1	20	160	176	40	120	–	–	14.80
21 80 024	1	24	192	208	40	150	–	–	22.00
21 80 025	1	25	200	216	40	150	–	–	23.80
21 80 030	1	30	240	256	40	190	–	–	32.00
<b>Module 10*</b>									
21 11 020	2	20	200	220	40	150	–	–	35.00
<b>Module 12*</b>									
21 12 020	3	20	240	264	40	170	–	–	51.33

\* with threads for handling

Further finishing (turning bores, keywaying, threading, etc.) is possible within short time.

