

## Type 125 / 475 Lubricators

The single-point lubrication system type 125 and type 475 is an electronically controlled lubricator which is based on the grease gun principle. After starting the operation, a nitrogen gas is generated electronically to move a piston.

### Type 125 / 475 Long-Term Use

The grease filling by the type 125 and 475 is pressed out evenly (not pulsating) at constant pressure according to the selected dosage. Depending on requirements, an emptying time of 1-18 months can be selected for a grease filling via microswitches.

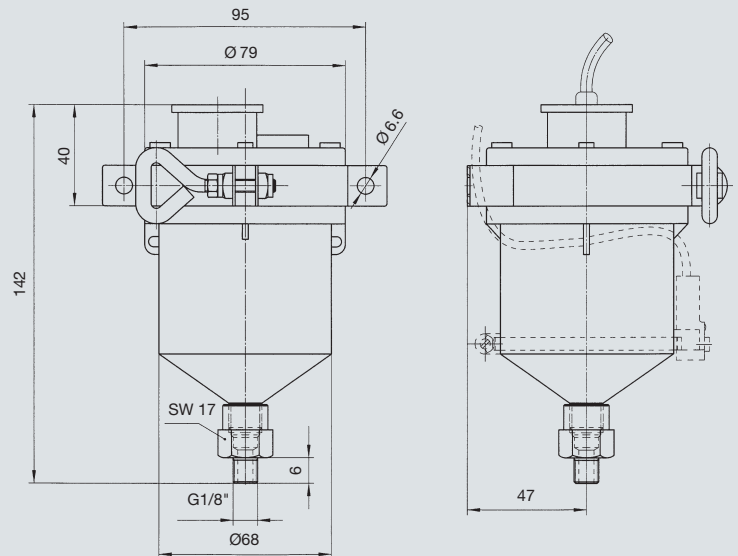
The transparent housing, which can be mounted in any position, allows a visual check of the amount of grease still available at any time. After complete emptying, further use is possible by refilling.



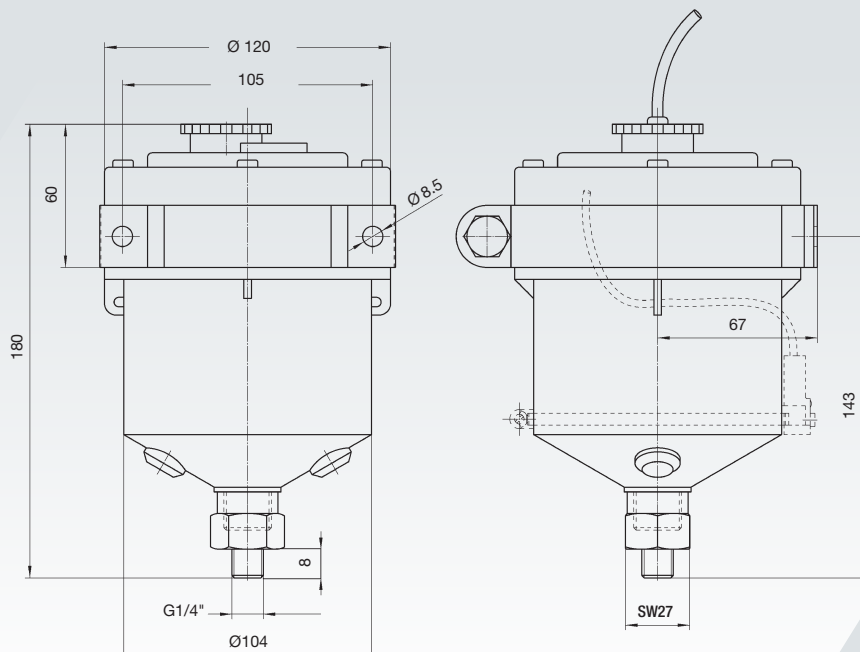
### Advantages of Type 125 / 475 Lubricators

- ⊛ Precise, reliable delivery of lubricant
- ⊛ Battery operation
- ⊛ Emptying time 1 - 18 months
- ⊛ Synchronization with the machine operating time possible
- ⊛ Visual check of level possible at all times
- ⊛ Connection of hose line possible \*
- ⊛ Special grease fillings possible
- ⊛ Delivery of oils and greases up to NLGI-1
- ⊛ ATEX possible (II 2G Ex ib IIC T4 / T3 Gb)

\* Hose length depends on lubricant and application



Type 125



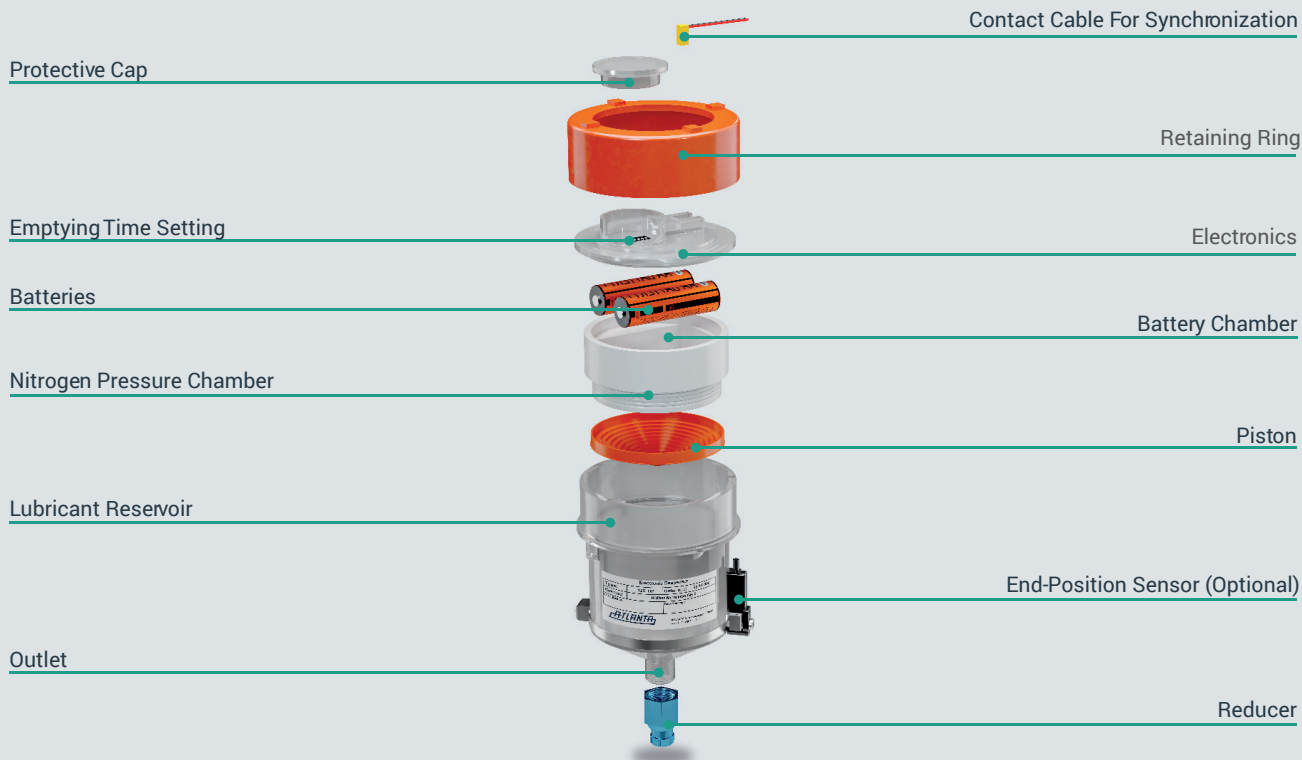
Type 475

## Technical Data

Lubricator Model		Type 125		Type 475	
		Without ATEX	With ATEX	Without ATEX	With ATEX
Order Code	Lubricant Type 1	65 91 000	65 91 006	65 91 007	-
	Lubricant Type 2	65 91 004		65 91 014	
	With Lubricant	65 91 009		65 91 069	
	Lubricant Type 1 + EP Sensor <sup>1)</sup>	65 91 050		65 91 056	
	Lubricant Typ 2 + EP Sensor <sup>1)</sup>	65 91 054		-	
	Without Lubricant + EP Sensor <sup>1)</sup>	65 91 059		-	
Drive		Nitrogen Pressure Chamber			
Operating Pressure		0.2 - 3.0 Bar / 2.9 - 43.5 psi			
Settings		1 - 18 Month			
Time or Pulse Control		Time Mode			
Lubrication Volume		100 ml		460 ml	
Lubricating Medium		Oils & Greases Up To NLGI 1			
Temperature Range		- 30 °C to +50 °C			
Operating Voltage		3.0 V Batteries *			
Weight Empty		~ 420 g		~ 600 g	
Dimensions H x Ø		100 x 80 mm		150 x 115 mm	
Outlet		G1/4 / G1/8		G1/2 / G1/4	
Performance Monitoring		LED Red/Green			

1) End-Position Sensor

## Components



## Spare Parts

Model	Type 125	Type 475
Nitrogen Pressure Chamber	65 91 001 *	65 91 017 *
Assembly Wrench	65 91 030	65 91 032
Mounting Insert	65 91 031	65 91 033

\* Batteries are included