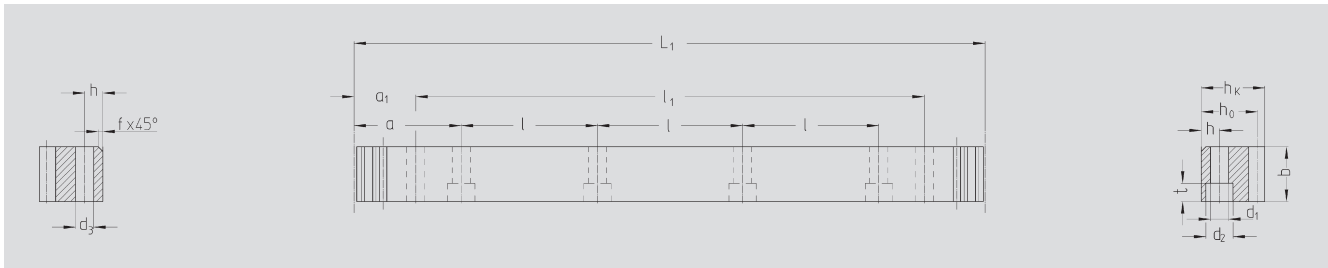




ATLANTA-Quality 10



Order Code	Module	L ₁	N° of teeth	b	h _k	h ₀	f	a	l	N° of holes	h	d ₁	d ₂	t	a ₁	l ₁	d ₃	kg
34 93 100	1	999.06	318	15	15	14	2			without mounting holes								1.64
34 93 200	1	1998.05	636	15	15	14	2			without mounting holes								3.28
34 16 100	1.5	999.03	212	17	17	15.5	2			without mounting holes								2.06
34 16 200	1.5	1998.05	424	17	17	15.5	2			without mounting holes								4.12
34 20 100	2	1005.31	160	25	24	22	2	62.83	125.66	8	8	7	11	7	31.3	942.7	5.7	4.20
34 21 100	2	1005.31	160	25	24	22	2			without mounting holes								4.20
34 20 200	2	2010.62	320	25	24	22	2	62.83	125.66	16	8	7	11	7	31.3	1948.0	5.7	8.40
34 21 200	2	2010.62	320	25	24	22	2			without mounting holes								8.40
34 30 100	3	1017.88	108	30	29	26	2	63.62	127.23	8	9	10	15	9	34.4	949.1	7.7	6.00
34 31 100	3	1017.88	108	30	29	26	2			without mounting holes								6.00
34 30 200	3	2035.75	216	30	29	26	2	63.62	127.23	16	9	10	15	9	34.4	1967	7.7	12.00
34 31 200	3	2035.75	216	30	29	26	2			without mounting holes								12.00
34 40 100 ¹⁾	4	1005.31	80	40	39	35	2	62.83	125.66	8	12	10	15	9	37.5	930.3	7.7	10.20
34 41 100	4	1005.31	80	40	39	35	2			without mounting holes								10.20
34 42 100	4	1005.31	80	40	39	35	2	62.83	125.66	8	12	14	20	13	37.5	930.3	11.7	10.20
34 40 200 ¹⁾	4	2010.62	160	40	39	35	2	62.83	125.66	16	12	10	15	9	37.5	1935.6	7.7	20.50
34 41 200	4	2010.62	160	40	39	35	2			without mounting holes								20.50
34 42 200	4	2010.62	160	40	39	35	2	62.83	125.66	16	12	14	20	13	37.5	1935.6	11.7	20.50
34 50 100	5	1005.31	64	50	39	34	2.5	62.83	125.66	8	12	14	20	13	30.2	945.0	11.7	13.80
34 51 100	5	1005.31	64	50	39	34	2.5			without mounting holes								13.80
34 50 200	5	2010.62	128	50	39	t34	2.5	62.83	125.66	16	12	14	20	13	30.2	1950.3	11.7	27.50
34 51 200	5	2010.62	128	50	39	34	2.5			without mounting holes								27.50
34 60 100	6	1017.88	54	60	49	43	2.5	63.62	127.23	8	16	18	26	17	31.4	955.0	15.7	21.00
34 61 100	6	1017.88	54	60	49	43	2.5			without mounting holes								21.00
34 60 200	6	2035.75	108	60	49	43	2.5	63.62	127.23	16	16	18	26	17	31.4	1972.9	15.7	42.00
34 61 200	6	2035.75	108	60	49	43	2.5			without mounting holes								42.00
34 81 100	8	1005.31	40	80	79	71	2.5			without mounting holes								44.63
34 81 200	8	2010.61	80	80	79	71	2.5			without mounting holes								82.26
34 11 100	10	1005.30	32	100	99	89	2.5			without mounting holes								70.60

1) The screw joint limits the feed force.

500 mm and other length on request.

Total pitch error

$$GT_f/1000 \leq 0.200 \text{ mm,}$$

$$GT_f/1500 \leq 0.300 \text{ mm,}$$

$$GT_f/2000 \leq 0.400 \text{ mm.}$$

- Teeth hardened with the ATLANTA high performance hardening process
- Heat-treatable steel according to ATLANTA-Standard
- Bright steel

Mounting racks see page ZF-2.

To achieve precision rack joints, we recommend our patented rack assembly kit, see page ZF-4.

For lubrication of rack & pinions we recommend our automatic lubrication systems, see page ZE-1.

For the calculation and selection of the rack & pinion drive, see page ZD-1.

Screws for rack mounting, see page ZF-3.

