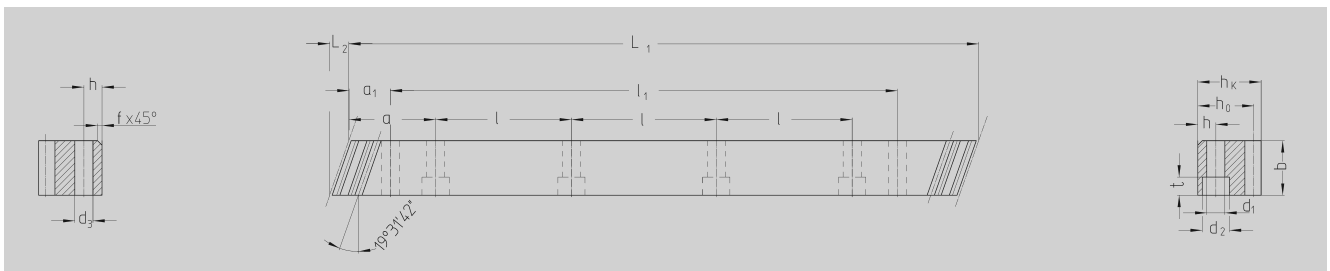




ATLANTA-Quality 10



Order Code	Module	L ₁	L ₂	N° of Teeth	b	h _k	h ₀	f	a	l	N° of Holes	h	d ₁	d ₂	t	a ₁	l ₁	d ₃	kg	
39 15 050 ²⁾	1.5	500.00	6.02	100	17	17	15.5	2	62.5	125	4	6	6	10	6	31.7	436.6	5.7	1.30	
39 16 050	1.5	500.00	6.02	100	17	17	15.5	2				without Mounting Holes								1.30
39 15 100	1.5	1000.00	6.02	200	17	17	15.5	2	62.5	125	8	6	6	10	6	31.7	936.6	5.7	2.60	
39 16 100	1.5	1000.00	6.02	200	17	17	15.5	2				without Mounting Holes								2.60
39 20 050 ²⁾	2	500.00	8.87	75	25	24	22	2	62.5	125	4	8	7	11	7	31.7	436.6	5.7	2.10	
39 21 050	2	500.00	8.87	75	25	24	22	2				without Mounting Holes								2.10
39 20 100	2	1000.00	8.87	150	25	24	22	2	62.5	125	8	8	7	11	7	31.7	936.6	5.7	4.20	
39 21 100	2	1000.00	8.87	150	25	24	22	2				without Mounting Holes								4.20
39 20 200	2	2000.00	8.87	300	25	24	22	2	62.5	125	16	8	7	11	7	31.7	1936.6	5.7	8.40	
39 21 200	2	2000.00	8.87	300	25	24	22	2				without Mounting Holes								8.40
39 30 050 ²⁾	3	500.00	10.64	50	30	29	26	2	62.5	125	4	9	10	15	9	35.0	430.0	7.7	3.00	
39 31 050	3	500.00	10.64	50	30	29	26	2				without Mounting Holes								3.00
39 30 100	3	1000.00	10.64	100	30	29	26	2	62.5	125	8	9	10	15	9	35.0	930.0	7.7	6.00	
39 31 100	3	1000.00	10.64	100	30	29	26	2				without Mounting Holes								6.00
39 30 200	3	2000.00	10.64	200	30	29	26	2	62.5	125	16	9	10	15	9	35.0	1930.0	7.7	12.00	
39 31 200	3	2000.00	10.64	200	30	29	26	2				without Mounting Holes								12.00
39 40 050 ¹⁾²⁾	4	506.67	14.2	38	40	39	35	2	62.5	125	4	12	10	15	9	33.3	433.0	7.7	5.30	
39 41 050	4	506.67	14.2	38	40	39	35	2				without Mounting Holes								5.30
39 40 100 ²⁾	4	1000.00	14.2	75	40	39	35	2	62.5	125	8	12	10	15	9	33.3	933.4	7.7	10.50	
39 41 100	4	1000.00	14.2	75	40	39	35	2				without Mounting Holes								10.50
39 42 100	4	1000.00	14.2	75	40	39	35	2	62.5	125	8	12	14	20	13	33.3	933.4	11.7	10.50	
39 42 150 ¹⁾	4	1506.67	14.2	113	40	39	35	2	62.5	125	12	12	14	20	13	33.3	1433.4	11.7	15.75	
39 40 200	4	2000.00	14.2	150	40	39	35	2	62.5	125	16	12	10	15	9	33.3	1933.4	7.7	21.00	
39 41 200	4	2000.00	14.2	150	40	39	35	2				without Mounting Holes								21.00
39 42 200	4	2000.00	14.2	150	40	39	35	2	62.5	125	16	12	14	20	13	33.3	1933.4	11.7	21.00	
39 50 050 ²⁾	5	500.00	17.7	30	50	39	34	2.5	62.5	125	4	12	14	20	13	37.5	425.0	11.7	6.50	
39 51 050	5	500.00	17.7	30	50	39	34	2.5				without Mounting Holes								6.50
39 50 100	5	1000.00	17.7	60	50	39	34	2.5	62.5	125	8	12	14	20	13	37.5	925.0	11.7	13.00	
39 51 100	5	1000.00	17.7	60	50	39	34	2.5				without Mounting Holes								13.00
39 50 200	5	2000.00	17.7	120	50	39	34	2.5	62.5	125	16	12	14	20	13	37.5	1925.0	11.7	26.00	
39 51 200	5	2000.00	17.7	120	50	39	34	2.5				without Mounting Holes								26.00
39 60 050 ²⁾	6	500.00	21.4	25	60	49	43	2.5	62.5	125	4	16	18	26	17	37.5	425.0	15.7	9.90	
39 61 050	6	500.00	21.4	25	60	49	43	2.5				without Mounting Holes								9.90
39 60 100	6	1000.00	21.4	50	60	49	43	2.5	62.5	125	8	16	18	26	17	37.5	925.0	15.7	19.80	
39 61 100	6	1000.00	21.4	50	60	49	43	2.5				without Mounting Holes								19.80
39 60 200	6	2000.00	21.4	100	60	49	43	2.5	62.5	125	16	16	18	26	17	37.5	1925.0	15.7	39.60	
39 61 200	6	2000.00	21.4	100	60	49	43	2.5				without Mounting Holes								39.60

- 1) These racks should be used for continuous linking only with the left side (see sketch).
- 2) The screw joint limits the feed force.

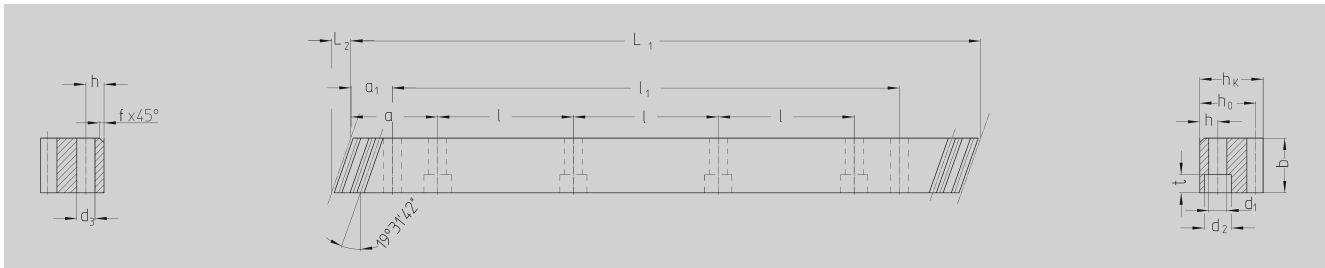
Total pitch error $GT_f/1000 \leq 0.200$ mm.

- Milled teeth and induction hardened
- Material C45
- Backside machined, profile blasted

Further information see page ZA-13.



ATLANTA-Quality 10



Order Code	Module	L ₁	L ₂	N° of Teeth	b	h _k	h ₀	f	a	l	N° of Holes	h	d ₁	d ₂	t	a ₁	l ₁	d ₃	kg
39 80 050 ²⁾	8	480.00	28.4	18	80	79	71	2.5	60.0	120	4	25	22	33	21	120.0	240	19.7	21.00
39 81 050	8	480.00	28.4	18	80	79	71	2.5					without Mounting Holes						21.00
39 80 100	8	960.00	28.4	36	80	79	71	2.5	60.0	120	8	25	22	33	21	120.0	720	19.7	42.50
39 81 100	8	960.00	28.4	36	80	79	71	2.5					without Mounting Holes						42.50
39 80 200	8	1920.00	28.4	72	80	79	71	2.5	60.0	120	16	25	22	33	21	120.0	1680	19.7	85.00
39 81 200	8	1920.00	28.4	72	80	79	71	2.5					without Mounting Holes						85.00
39 10 100	10	1000.00	35.46	30	100	99	89	2.5	62.5	125	8	32	33	48	32	125.0	750	19.7	68.72
39 11 100	10	1000.00	35.46	30	100	99	89	2.5					without Mounting Holes						68.72
39 12 100	12	1000.00	42.56	25	120	120	108	2.5	40.0	125	8	40	39	58	38	102.5	750	19.7	120.00
39 13 100	12	1000.00	42.56	25	120	120	108	2.5					without Mounting Holes						120.00

- 1) These racks should be used for continuous linking only with the left side (see sketch).
- 2) The screw joint limits the feed force.

Total pitch error $GT_f / 1000 \leq 0.200$ mm.

- Milled teeth and induction hardened
- Material C45
- Backside machined, profile blasted

Mounting racks, see page ZF-2.

To achieve precision rack joints, we recommend our patented rack assembly kit, see page ZF-4.

For lubrication of racks & pinions, we recommend our automatic lubrication systems, see page ZE-1.

For the calculation and selection of the rack & pinion drive, see page ZD-1.

Screws for rack mounting, see page ZF-3.

