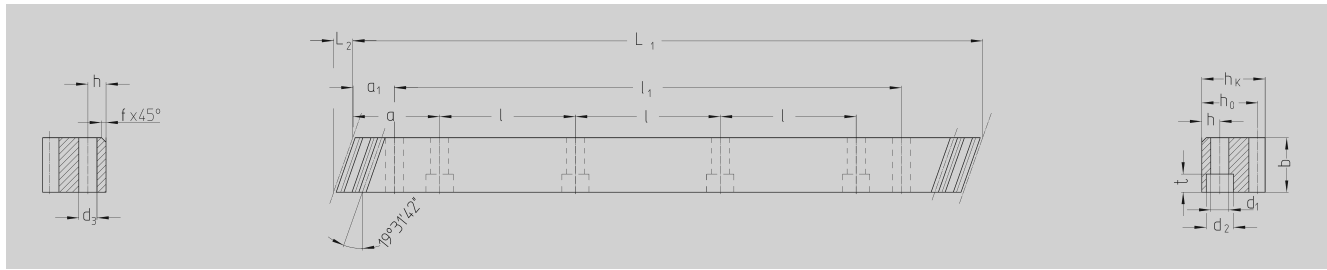




**ATLANTA-Quality 9**



Order Code	Module	L <sub>1</sub>	L <sub>2</sub>	N° of Teeth	b	h <sub>k</sub>	h <sub>0</sub>	f	a	l	N° of Holes	h	d <sub>1</sub>	d <sub>2</sub>	t	a <sub>1</sub>	l <sub>1</sub>	d <sub>3</sub>	kg	
47 15 100	1.5	1000.00	6.0	200	17	17	15.5		62.5	125	8	6	6	10	6	31.7	936.6	5.7	1.30	
47 16 100	1.5	1000.00	6.0	200	17	17	15.5					without Mounting Holes								1.30
47 15 150	1.5	1500.00	6.0	300	17	17	15.5		62.5	125	12	6	6	10	6	31.7	1436.6	5.7	1.95	
47 16 150	1.5	1500.00	6.0	300	17	17	15.5					without Mounting Holes								1.95
47 15 200	1.5	2000.00	6.0	400	17	17	15.5		62.5	125	16	6	6	10	6	31.7	1936.6	5.7	2.60	
47 16 200	1.5	2000.00	6.0	400	17	17	15.5					without Mounting Holes								2.60
47 20 050	2	500.00	9.2	75	26	24	22		62.5	125	4	8	7	11	7	31.7	436.6	5.7	2.20	
47 21 050	2	500.00	9.2	75	26	24	22					without Mounting Holes								2.20
47 20 100	2	1000.00	9.2	150	26	24	22		62.5	125	8	8	7	11	7	31.7	936.6	5.7	4.40	
47 21 100	2	1000.00	9.2	150	26	24	22					without Mounting Holes								4.40
47 20 200	2	2000.00	9.2	300	26	24	22		62.5	125	16	8	7	11	7	31.7	1936.6	5.7	8.80	
47 21 200	2	2000.00	9.2	300	26	24	22					without Mounting Holes								8.80
47 30 050	3	500.00	11.0	50	31	29	26		62.5	125	4	9	10	15	9	35.0	430.0	7.7	3.10	
47 31 050	3	500.00	11.0	50	31	29	26					without Mounting Holes								3.10
47 30 100	3	1000.00	11.0	100	31	29	26		62.5	125	8	9	10	15	9	35.0	930.0	7.7	6.20	
47 31 100	3	1000.00	11.0	100	31	29	26					without Mounting Holes								6.20
47 30 200	3	2000.00	11.0	200	31	29	26		62.5	125	16	9	10	15	9	35.0	1930.0	7.7	12.50	
47 31 200	3	2000.00	11.0	200	31	29	26					without Mounting Holes								12.50
47 30 300	3	3000.00	11.0	300	31	29	26		62.5	125	24	9	10	15	9	35.0	2930.0	7.7	18.60	
47 31 300	3	3000.00	11.0	300	31	29	26					without Mounting Holes								18.60
47 40 050 <sup>1)</sup>	4	506.67	14.5	38	41	39	35		62.5	125	4	12	10	15	9	33.3	433.0	7.7	5.60	
47 41 050	4	506.67	14.5	38	41	39	35					without Mounting Holes								5.60
47 40 100	4	1000.00	14.5	75	41	39	35		62.5	125	8	12	10	15	9	33.3	933.4	7.7	11.10	
47 41 100	4	1000.00	14.5	75	41	39	35					without Mounting Holes								11.10
47 40 200	4	2000.00	14.5	150	41	39	35		62.5	125	16	12	10	15	9	33.3	1933.4	7.7	22.20	
47 41 200	4	2000.00	14.5	150	41	39	35					without Mounting Holes								22.20
47 50 100	5	1000.00	17.7	60	50	39	34		62.5	125	8	12	14	20	13	37.5	925.0	11.7	13.26	
47 51 100	5	1000.00	17.7	60	50	39	34					without Mounting Holes								13.26
47 50 200	5	2000.00	17.7	120	50	39	34		62.5	125	16	12	14	20	13	37.5	1925.0	11.7	26.52	
47 51 200	5	2000.00	17.7	120	50	39	34					without Mounting Holes								26.52
47 60 100	6	1000.00	21.3	50	60	49	43		62.5	125	8	16	18	26	17	37.5	925.0	15.7	20.12	
47 61 100	6	1000.00	21.3	50	60	49	43					without Mounting Holes								20.12
47 60 200	6	2000.00	21.3	100	60	49	43		62.5	125	16	16	18	26	17	37.5	1925.0	15.7	40.24	
47 61 200	6	2000.00	21.3	100	60	49	43					without Mounting Holes								40.24
47 80 100	8	960.00	28.7	36	81	79	71		60.0	120	8	25	22	33	21	120.0	720.0	19.7	44.85	
47 81 100	8	960.00	28.7	36	81	79	71					without Mounting Holes								44.85
47 80 200	8	1920.00	28.7	72	81	79	71		60.0	120	16	25	22	33	21	120.0	1680.0	19.7	89.71	
47 81 200	8	1920.00	28.7	72	81	79	71					without Mounting Holes								89.71
47 10 100	10	1000.00	35.5	30	100	99	89		62.5	125	8	32	33	48	32	125	750	19.7	69.80	
47 11 100	10	1000.00	35.5	30	100	99	89					without Mounting Holes								69.80



1) These racks should be used for continuous linking only with the left side (see sketch).

**Total pitch error  $GT_f/1000 \leq 0.150$  mm.**

- Milled teeth
- Material C45
- Bright Steel

**Mounting racks, see page ZF-2.**

**Further information see page ZA–10.**