

Input speed (n_1) = 1400 min⁻¹

Output speed n_2 [min ⁻¹]	Ratio i	Motor power P_{1M} [kW]	Output torque M_{2M} [Nm]	Service factor $f.s$	Nominal power P_{1R} [kW]	Nominal torque M_{2R} [Nm]	B5 motor flanges		B14 motor flanges		Dynamic efficiency RD	Tooth module [mm]	Ratios code
							-	-	-O 56	-P 63			
280	5	0.18	5	3.3	0.60	17			B-C		82	1.26	01
200	7	0.18	7	2.4	0.44	17			B-C		80	1.44	02
140	10	0.18	10	1.8	0.32	17			B-C		78	1.44	03
93	15	0.18	13	1.4	0.25	19			B-C		73	1.44	04
70	20	0.18	17	1.1	0.20	19			B-C		70	1.09	05
47	30	0.12	15	1.4	0.17	21			B-C		62	1.44	06
35	40	0.12	19	1.1	0.13	20			B-C		57	1.09	07
23	61	0.09	19	1.1	0.10	20			B-C		50	0.72	08
17.5	80	0.06	16	1.0	0.06	16			B-C		48	0.56	09
14	100	0.06*	16	0.5	0.03	8			B-C		40	0.45	10

* Power higher than the maximum one which can be supported by the gearbox. Select according to the torque M_{2R} Potenza superiore a quella massima sopportabile dal riduttore. Selezionare in base al momento torcente M_{2R} Motor flanges available
Flange motore disponibiliB) Supplied with reduction bushing
Fornito con bussola di riduzioneB) Available on request without reduction bushing
Disponibile a richiesta senza bussola di riduzioneC) Motor flange holes position
Posizione fori flangia motore

Lubrication

Lubrificazione

Unit I30 is supplied with synthetic oil to assure long life lubrication.

Food grade oil is available on request.

See Table 1 for lubrication and recommended quantity.

See Table 2 for possible radial and axial loads on the gearbox.

Il riduttore tipo I30 viene fornito con olio sintetico e lubrificazione tipo "long life".

Disponibile a richiesta olio alimentare.

Vedi Tabella 1 per oli e quantità consigliati.

Vedi Tabella 2 per i carichi radiali e assiali applicabili al riduttore.

Oil quantity for
all positions:
0.06 LQuantità olio per tutte
le posizioni: 0.06 LShell
Omala S4 WE 320Eni
Telium VSF 320

* For more details on lubrication and plugs check our website.

Tab. 1

* Per maggiori dettagli su lubrificazione e tappi olio vedi il nostro sito web.

Suggested

Suggerito

Stainless steel protection cap
(on request).Coperchio di protezione in
acciaio inox a richiesta.

Kit cod. KI450211



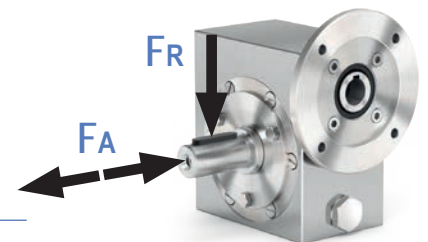
Radial and axial loads

Carichi radiali e assiali

Output shaft

Albero di uscita

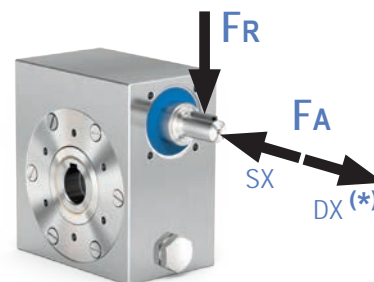
n_2 [min ⁻¹]	F_A [N]	F_R [N]
200	120	600
150	140	700
100	160	800
75	180	900
50	200	1000
25	250	1250
15	280	1400



Input shaft

Albero in entrata

n_1 [min ⁻¹]	F_A [N]	F_R [N]
1400	20	100



* Strong axial loads in the DX direction are not allowed.

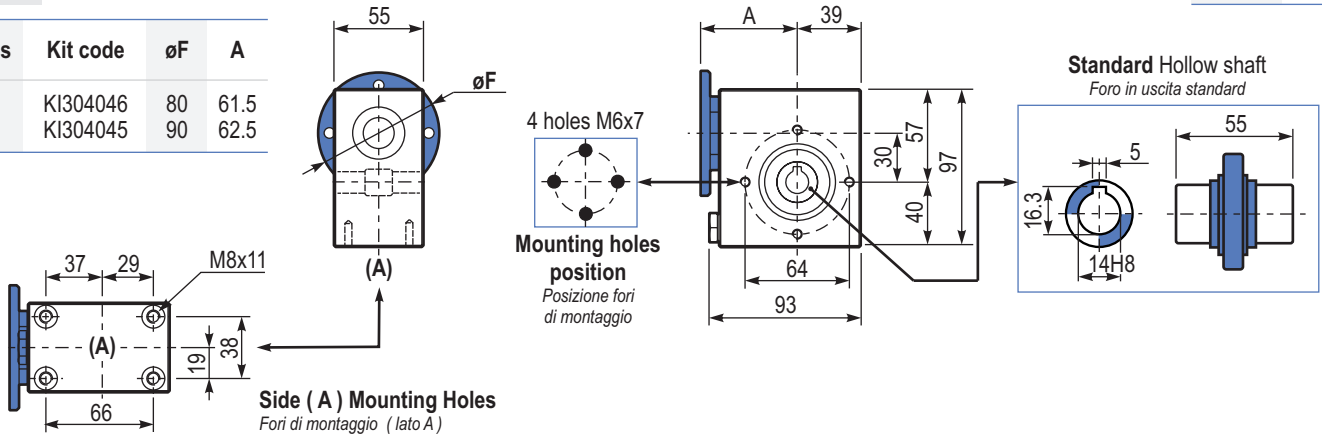
* Non sono consentiti forti carichi assiali con direzione DX

Tab. 2

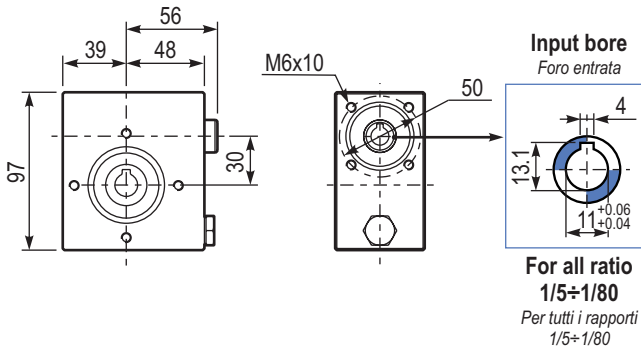
PI30UNI... **Basic gearbox**
Riduttore base

Gearbox weight
peso riduttore **2.5 kg**

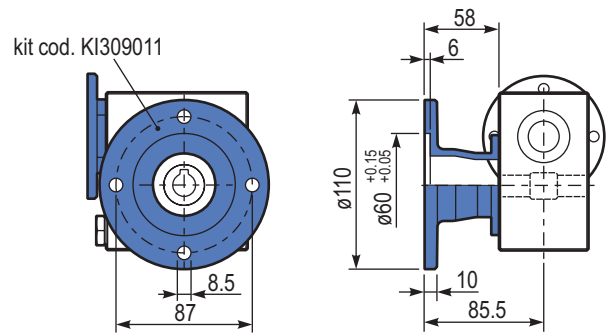
M. flanges	Kit code	øF	A
56B14	KI304046	80	61.5
63B14	KI304045	90	62.5



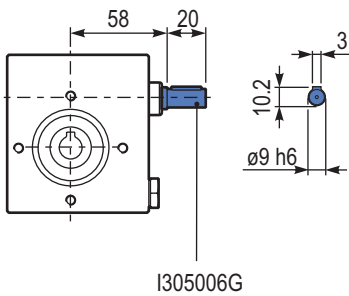
B130UNI... **Modular base**
Base modulare



PI30FLL... **Output flange**
Flangia uscita

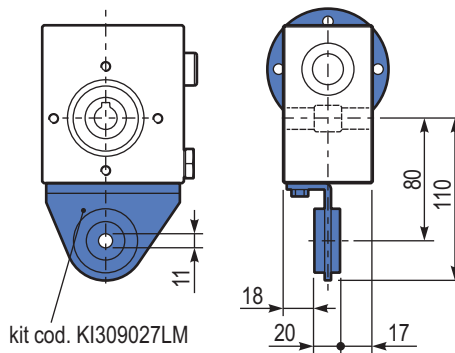


R130UNI... **Input shaft**
Albero in entrata



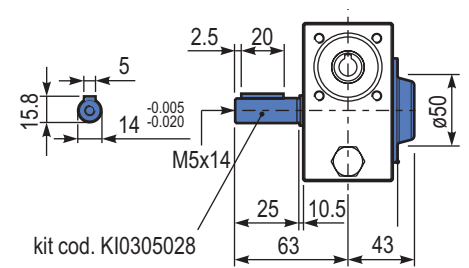
I305006G

PI30BRI... **Reaction arm**
Braccio di reazione



kit cod. KI309027LM

PI30...SMA... **Single Shaft**
Albero lento semplice



kit cod. KI305028

kit cod. KI450211
Protection cap
(on request)
A richiesta coperchio di protezione