

Input speed (n_1) = 1400 min⁻¹

Output speed n_2 [min ⁻¹]	Ratio i	Motor power P_{1M} [kW]	Output torque M_{2M} [Nm]	Service factor $f.s$	Nominal power P_{1R} [kW]	Nominal torque M_{2R} [Nm]	B5 motor flanges			B14 motor flanges			Dynamic efficiency RD	Tooth module [mm]	Ratios code
							-	-	-	-Q	-R	-T			
200	7	1.8	71	1.8	3.2	125	-	-	-	71	80	90	83	3.1	01
140	10	1.8	99	1.4	2.4	134	-	-	-	71	80	90	81	3.1	02
93	15	1.5	121	1.1	1.7	138	-	-	-	71	80	90	79	3.1	03
74	19	1.1	111	1.2	1.4	138	-	-	-	71	80	90	78	2.6	04
58	24	1.1	135	1.0	1.2	142	-	-	-	71	80	90	75	2.0	05
47	30	1.1	167	0.9	0.96	146	-	-	-	71	80	90	74	3.2	06
39	36	0.75	125	1.2	0.88	147	-	-	-	71	80	90	68	2.7	07
35	40	0.75	135	1.0	0.78	140	-	-	-	71	80	90	66	2.5	13
31	45	0.55	111	1.2	0.67	135	-	-	-	71	80	90	66	2.1	08
23	60	0.55	140	0.9	0.51	130	-	-	-	71	80	90	62	1.6	12
21	67	0.55	151	0.8	0.45	124	-	-	-	71	80	90	60	1.5	09
17.5	80	0.37	115	1.0	0.38	119	-	-	-	71	80	90	57	1.3	10
14.9	94	0.37	123	1.0	0.36	119	-	-	-	71	80	90	52	1.1	11

Motor flanges available
Flange motore disponibili



B) Supplied with reduction bushing
Fornito con bussola di riduzione



B) Available on request without reduction bushing
Disponibile a richiesta senza bussola di riduzione



C) Motor flange holes position
Posizione fori flangia motore

Lubrication

Lubrificazione

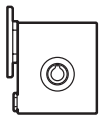
Unit I63 is supplied with synthetic oil to assure long life lubrication. Food grade oil is available on request. See Table 1 for lubrication and recommended quantity. See Table 2 for possible radial and axial loads on the gearbox.

Il riduttore tipo I63 viene fornito con olio sintetico e lubrificazione tipo "long life". Disponibile a richiesta olio alimentare. Vedi Tabella 1 per oli e quantità consigliati. Vedi Tabella 2 per i carichi radiali e assiali applicabili al riduttore.

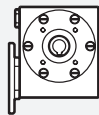
Shell Omala S4 WE 320

Eni Telium VSF 320

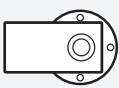
B3
Standard
0.60 L



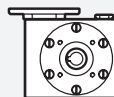
B8
On request
0.60 L



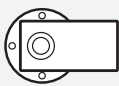
B6
On request
0.60 L



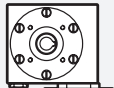
V5
On request
0.60 L



B7
On request
0.82 L



V6
On request
0.60 L



For more details on lubrication and plugs check our website.
Per maggiori dettagli su lubrificazione e tappi vedi il nostro sito web.

Tab. 1

Suggested Sugerito

Stainless steel protection cap (on request).
Coperchio di protezione in acciaio inox a richiesta.

Kit cod. KI630211



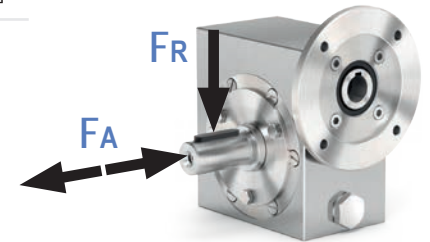
Radial and axial loads

Carichi radiali e assiali

Output shaft

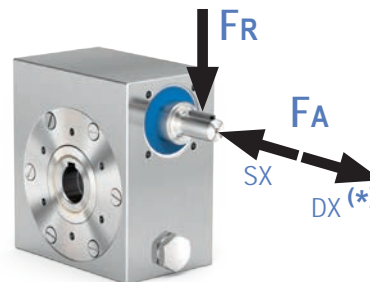
Albero di uscita

n_2 [min ⁻¹]	FA [N]	FR [N]
200	360	1800
150	400	2000
100	460	2300
75	500	2500
50	600	3000
25	700	3800
15	800	4000



Input shaft

Albero in entrata



n_1 [min ⁻¹]	FA [N]	FR [N]
1400	90	450

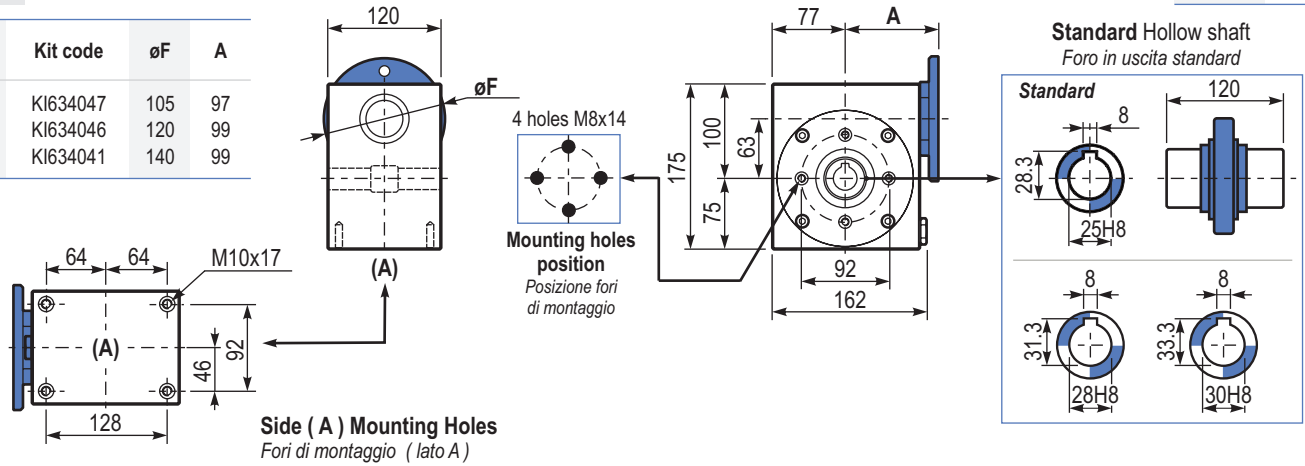
* Strong axial loads in the DX direction are not allowed.
* Non sono consentiti forti carichi assiali con direzione DX

Tab. 2

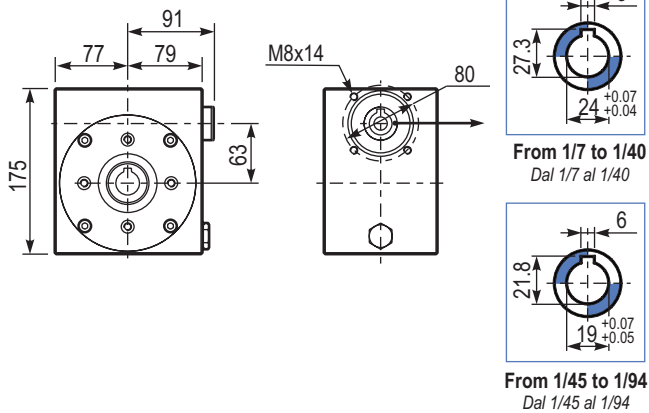
PI63UNI... **Basic gearbox**
Riduttore base

Gearbox weight
peso riduttore **14.6 kg**

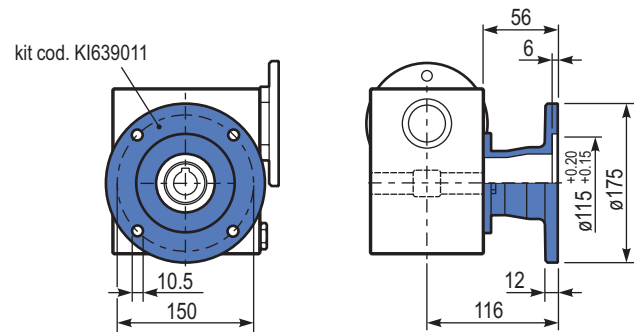
M. flanges	Kit code	øF	A
71B14	KI634047	105	97
80B14	KI634046	120	99
90B14	KI634041	140	99



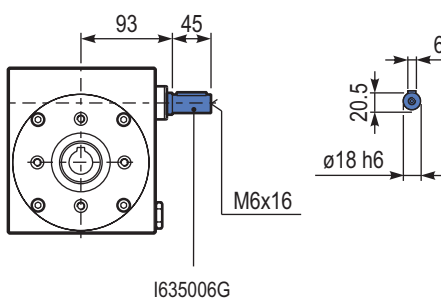
BI63UNI... **Modular base**
Base modulare



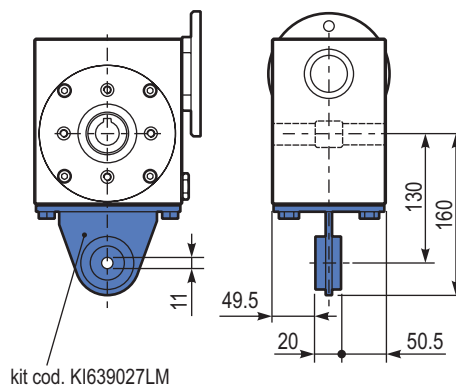
PI63FLL... **Output flange**
Flangia uscita



RI63UNI... **Input shaft**
Albero in entrata



PI63BRI... **Reaction arm**
Braccio di reazione



PI63...SMF... **Single Shaft**
Albero lento semplice

