

Input speed (n_1) = 1750 min⁻¹

Output speed n_2 [min ⁻¹]	Ratio i	Motor power P_{1M} [HP]	Output torque M_{2M} [lb in]	Service factor $f.s$	Nominal power P_{1R} [HP]	Nominal torque M_{2R} [lb in]	Available NEMA motor flanges		Dynamic efficiency RD	Tooth module [mm]	Ratio code
							-W 56C	-			
250.0	7	2	413	1.2	2.34	478			82	2.5	01
175.0	10	1.5	432	1.2	1.84	522			80	2.4	02
125.0	14	1	398	1.4	1.46	575			79	2.6	03
97.2	18	1	486	1.1	1.09	522			75	2.0	04
67.3	26	0.75	485	1.2	0.87	558			69	2.7	05
58.3	30	0.75	567	1.1	0.82	611			70	2.5	12
48.6	36	0.5	447	1.4	0.69	611			69	2.1	06
40.7	43	0.5	511	1.1	0.57	575			66	1.8	07
35.0	50	0.5	558	1.0	0.51	558			62	1.5	13
29.2	60	0.33	414	1.3	0.42	522			58	1.3	08
25.7	68	0.33	461	1.1	0.35	487			57	1.2	09
21.9	80	0.25	389	1.2	0.31	478			54	1.0	10
17.5	100	0.25	450	1.0	0.24	434			50	0.8	11

Motor flanges available
Flange motore disponibili



B) Supplied with reduction bushing
Fornito con bussola di riduzione



B) Available on request without reduction bushing
Disponibile a richiesta senza bussola di riduzione



C) Motor flange holes position
Posizione fori flangia motore

Lubrication

Lubrificazione

Unit D50 is supplied with synthetic oil to assure long life lubrication. Food grade oil is available on request. See Table 1 for lubrication and recommended quantity. See Table 2 for possible radial and axial loads on the gearbox.

Il riduttore tipo D50 viene fornito con olio sintetico e lubrificazione tipo "long life". Disponibile a richiesta olio alimentare. Vedi Tabella 1 per oli e quantità consigliati. Vedi Tabella 2 per i carichi radiali e assiali applicabili al riduttore.

Oil quantity for all positions:
4.93 oz.

Quantità olio per tutte le posizioni: 4.93 oz.

Shell
Omala S4 WE 320

Eni
Telium VSF 320

Tab. 1

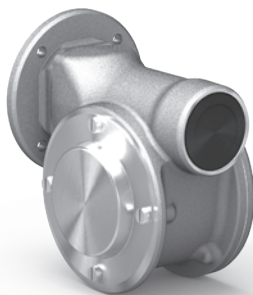
Suggested

Suggerito

Stainless steel protection cap (on request).

Coperchio di protezione in acciaio inox a richiesta.

Kit cod. KN500209



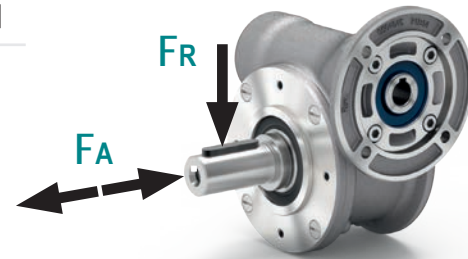
Radial and axial loads

Carichi radiali e assiali

Output shaft

Albero di uscita

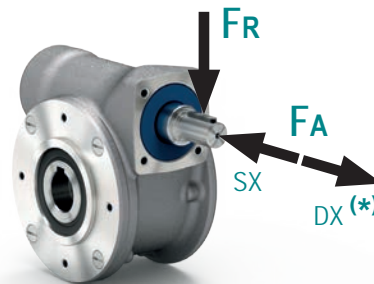
n_2 [min ⁻¹]	F_A [lb]	F_R [lb]
200	54	270
150	63	315
100	67	337
75	76	382
50	85	427
25	108	562
15	126	629



Input shaft

Albero in entrata

n_1 [min ⁻¹]	F_A [lb]	F_R [lb]
1750	17	85



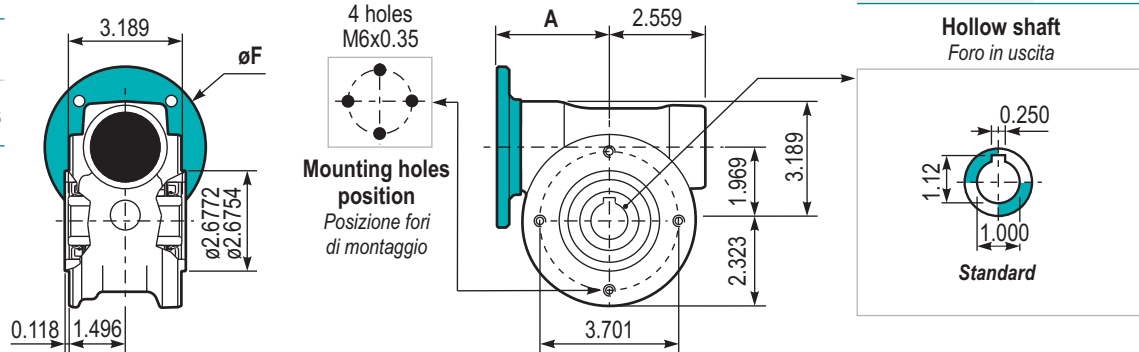
* Strong axial loads in the DX direction are not allowed.

* Non sono consentiti forti carichi assiali con direzione DX

Tab. 2

PD50 **UNI..** Basic gearbox
Riduttore base

M. flanges	Kit code	øF	A
56C	KUD504041	6.5	3.886



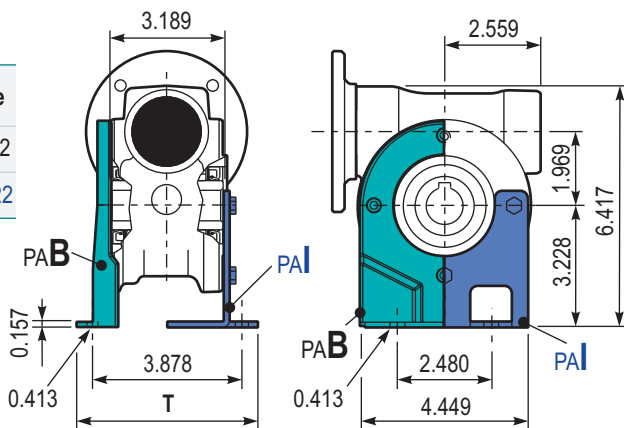
Gearbox weight
Peso riduttore 6.61 lb

Hollow shaft
Foro in uscita

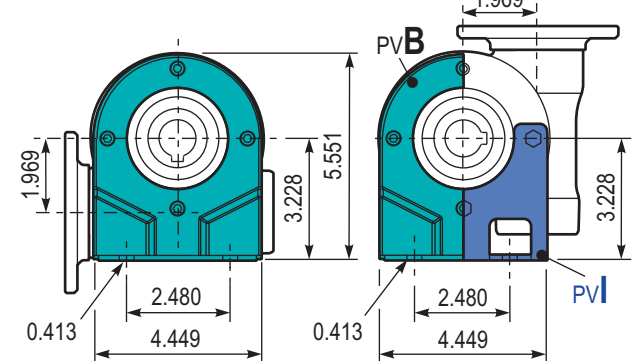
PD50 **PA...** Feet
Piedini

Type	T	Kit code
B**	4.843	K0509022
I*	4.803	KN509022

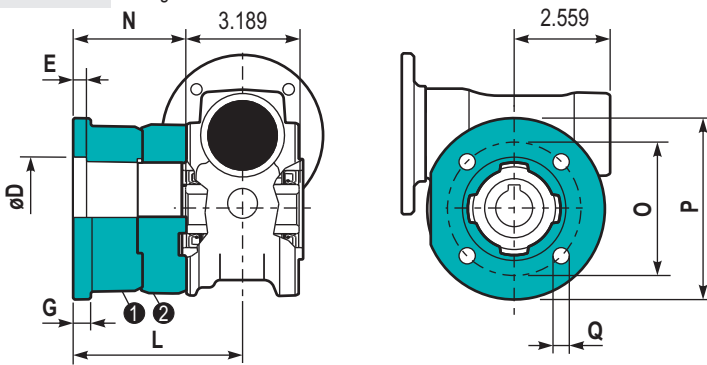
** Zink plated
* Stainless steel



PD50 **PBB..** Feet
Piedini

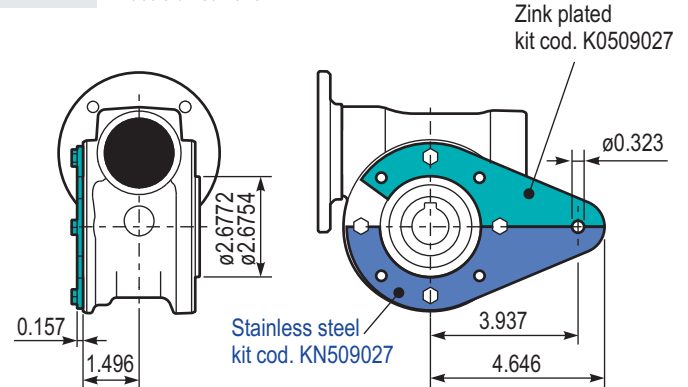


PD50 **FL..** Output flange
Flangia uscita

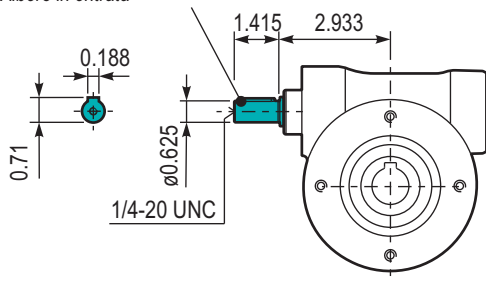


Type	øD	E	G	L	N	O	P	Q	Kit code
C	2.7638 2.7618	0.35	0.47	3.346	1.752	3.543	4.843	0.41	① K0509010 ② -
L	2.7638 2.7618	0.35	0.47	4.508	2.913	3.543	4.843	0.41	① K0509010 ② K0500200

PD50 **BR...** Reaction arm
Braccio di reazione



RD50UNI.. Input shaft
Albero in entrata Carbon steel kit cod. KU0455006



PD50.. **SID** Single output shaft
Albero semplice in uscita

