

Input speed (n_1) = 1750 min⁻¹

Output speed n_2 [min ⁻¹]	Ratio i	Motor power P_{1M} [HP]	Output torque M_{2M} [lb in]	Service factor $f.s$	Nominal power P_{1R} [HP]	Nominal torque M_{2R} [lb in]	Available NEMA motor flanges		Dynamic efficiency RD	Tooth module [mm]	Ratio code
							-W 56C	-X 143-5TC			
250.0	7	2	419	2.5	5.10	1053	B		83	3.1	01
175.0	10	2	583	1.9	3.93	1133	B		81	3.1	02
116.7	15	2	854	1.4	2.75	1159	B		79	3.1	03
92.1	19	2	1068	1.1	2.20	1159	B		78	2.6	04
72.9	24	1.5	972	1.2	1.87	1195	B		75	2.0	05
58.3	30	1.5	1199	1.0	1.56	1230	B		74	3.2	06
48.6	36	1	882	1.4	1.42	1239	B		68	2.7	07
43.8	40	1	951	1.2	1.25	1177	B		66	2.5	13
38.9	45	1	1070	1.1	1.08	1142	B		66	2.1	08
29.2	60	0.75	1005	1.1	0.83	1097	B		62	1.6	12
26.1	67	0.5	724	1.4	0.73	1044	B		60	1.5	09
21.9	80	0.5	821	1.2	0.62	1000	B		57	1.3	10
18.6	94	0.5	880	1.1	0.58	1000	B		52	1.1	11

Motor flanges available
Flange motore disponibili



B) Supplied with reduction bushing
Fornito con bussola di riduzione



B) Available on request without reduction bushing
Disponibile a richiesta senza bussola di riduzione



C) Motor flange holes position
Posizione fori flangia motore

Lubrication

Lubrificazione

Unit D63 is supplied with synthetic oil to assure long life lubrication. Food grade oil is available on request.

See Table 1 for lubrication and recommended quantity.

See Table 2 for possible radial and axial loads on the gearbox.

Il riduttore tipo D63 viene fornito con olio sintetico e lubrificazione tipo "long life". Disponibile a richiesta olio alimentare.

Vedi Tabella 1 per oli e quantità consigliati.

Vedi Tabella 2 per i carichi radiali e assiali applicabili al riduttore.

Oil quantity for all positions: 14.08 oz.	Shell Omala S4 WE 320	Eni Telium VSF 320
Quantità olio per tutte le posizioni: 14.08 oz.		

Tab. 1

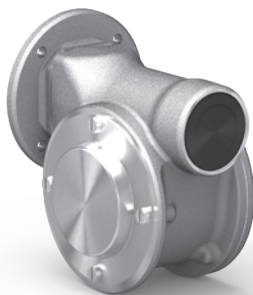
Suggested

Suggerito

Stainless steel protection cap (on request).

Coperchio di protezione in acciaio inox a richiesta.

Kit cod. KN630209



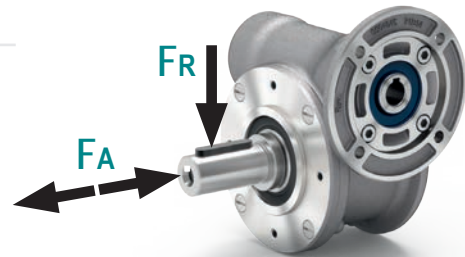
Radial and axial loads

Carichi radiali e assiali

Output shaft

Albero di uscita

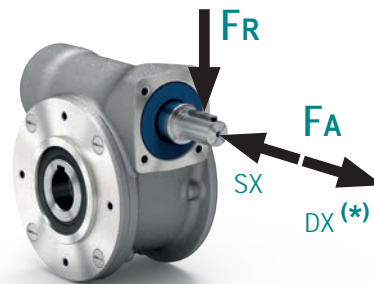
n_2 [min ⁻¹]	FA [lb]	FR [lb]
200	81	404.5
150	90	450
100	103.5	517
75	112.5	562
50	135	674.5
25	157	854
15	180	899



Input shaft

Albero in entrata

n_1 [min ⁻¹]	FA [lb]	FR [lb]
1750	20	101



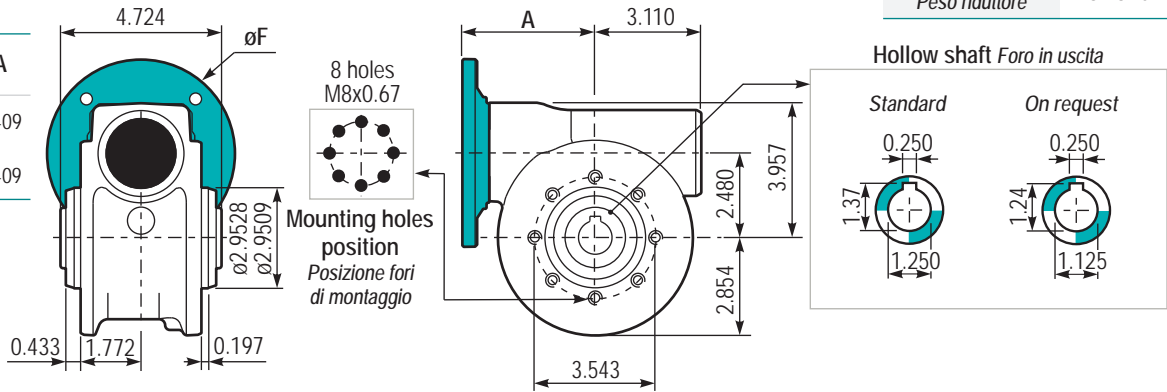
* Strong axial loads in the DX direction are not allowed.

* Non sono consentiti forti carichi assiali con direzione DX

Tab. 2

PD63UNI.. Basic gearbox
Riduttore base

M. flanges	Kit code	øF	A
56C	KUD634041	6.50	4.409
143/5 TC	KUD634041	6.50	4.409

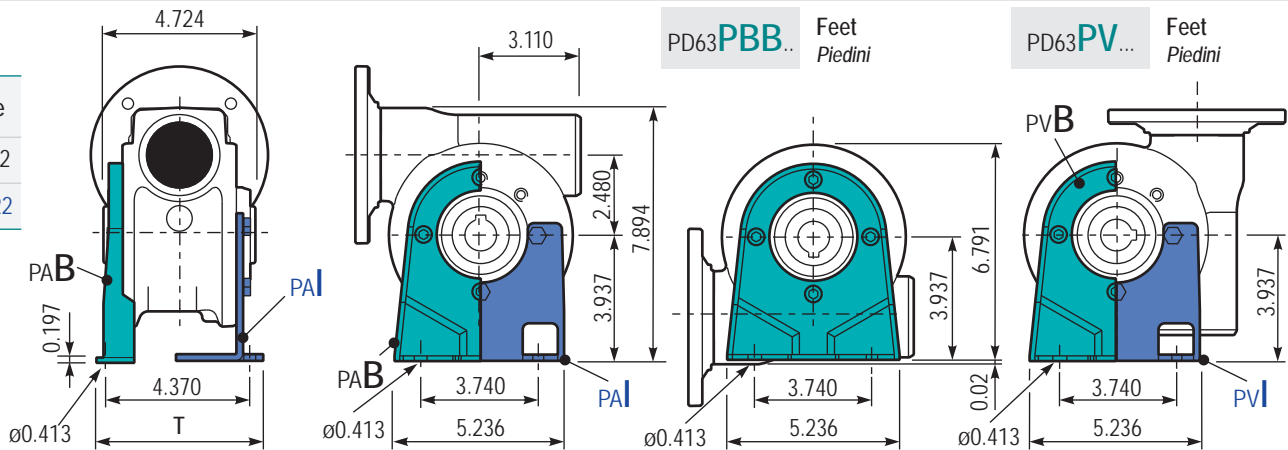


Gearbox weight
Peso riduttore 13.23 lb

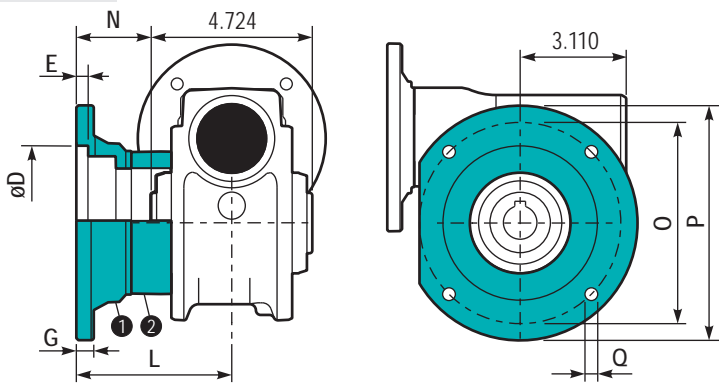
PD63PA... Feet
Piedini

Type	T	Kit code
B**	5.669	K0639022
I*	5.118	KN639022

** Zink plated
* Stainless steel

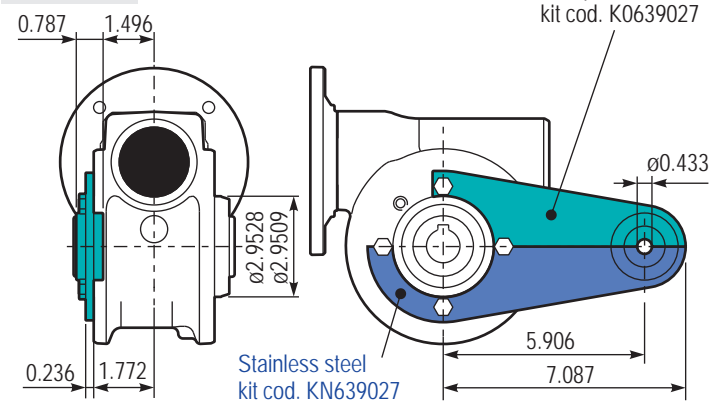


PD63FL.. Output flange
Flangia uscita

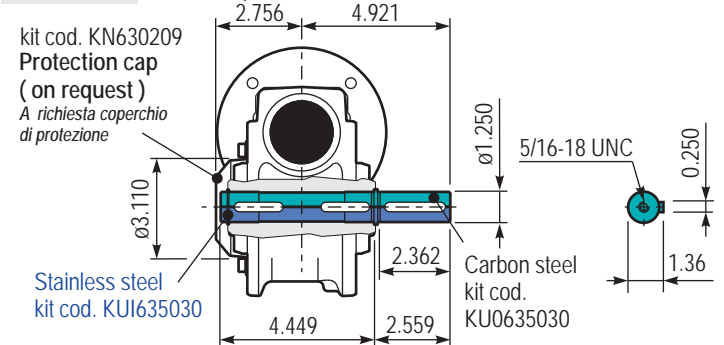


Type	øD	E	G	L	N	O	P	Q	Kit code
C	4.5354	0.28	0.51	3.386	1.024	5.906	6.890	0.43	1 K0639010
	4.5335								2
L	4.5354	0.28	0.51	4.567	2.205	5.906	6.890	0.43	1 K0639010
	4.5335								2 K0630200

PD63BR.. Reaction arm
Braccio di reazione



PD63..SIE Single output shaft
Albero semplice in uscita



RD63UNI.. Input shaft
Albero in entrata

