

Input speed ( $n_1$ ) = 1750 min<sup>-1</sup>

Output speed $n_2$ [min <sup>-1</sup> ]	Ratio $i$	Motor power $P_{1M}$ [HP]	Output torque $M_{2M}$ [lb in]	Service factor $f.s$	Nominal power $P_{1R}$ [HP]	Nominal torque $M_{2R}$ [lb in]	Available NEMA motor flanges		Dynamic efficiency RD	Tooth module [mm]	Ratio code
							-W 56C	- -			
250.0	7	1	202	1.3	1.29	257			80	2.2	01
175.0	10	0.75	213	1.2	0.91	257			79	2.2	02
125.0	14	0.5	194	1.3	0.67	257			77	2.4	03
83.3	21	0.5	253	1.4	0.69	345			67	1.6	04
62.5	28	0.5	328	1.1	0.53	345			65	2.5	05
47.3	37	0.33	277	1.2	0.42	345			63	1.8	06
38.0	46	0.33	323	1.1	0.36	345			59	1.5	07
29.2	60	0.25	303	1.1	0.29	345			56	1.2	08
25.0	70	0.25	340	0.8	0.19	257			54	1.0	09
17.2	102	0.25*	450	<0.8	0.14	248			49	0.72	10

\* Power higher than the maximum one which can be supported by the gearbox. Select according to the torque  $M_{2R}$

\* Potenza superiore a quella massima sopportabile dal riduttore. Selezionare in base al momento torcente  $M_{2R}$

The nominal power should be reduced if the ambient temperature is  $\geq 30^\circ\text{C}$ , or when a cooler gearbox is required.

Diminuire la potenza nominale in caso di temperatura ambiente  $\geq 30^\circ\text{C}$  o se è richiesta una bassa temperatura di utilizzo del riduttore.

-  **Motor flanges available**  
Flange motore disponibili
-  **B) Supplied with reduction bushing**  
Fornito con bussola di riduzione
-  **B) Available on request without reduction bushing**  
Disponibile a richiesta senza bussola di riduzione
-  **C) Motor flange holes position**  
Posizione fori flangia motore

## Lubrication

### Lubrificazione

Unit N45 is supplied with synthetic oil to assure long life lubrication.

Food grade oil is available on request.

See Table 1 for lubrication and recommended quantity.

See Table 2 for possible radial and axial loads on the gearbox.

*I riduttore tipo N45 viene fornito con olio sintetico e lubrificazione tipo "long life".*

*Disponibile a richiesta olio alimentare.*

*Vedi Tabella 1 per oli e quantità consigliati.*

*Vedi Tabella 2 per i carichi radiali e assiali applicabili al riduttore.*

Oil quantity for all positions: 4.58 oz. <i>Quantità olio per tutte le posizioni: 4.58 oz.</i>	Shell <i>Omala S4 WE 320</i>	Eni <i>Telium VSF 320</i>
--	---------------------------------	------------------------------

Tab. 1

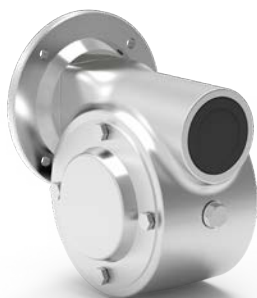
## Suggested

### Suggerito

Stainless steel protection cap  
(on request).

*Coperchio di protezione in acciaio inox a richiesta.*

Kit cod. KN300209



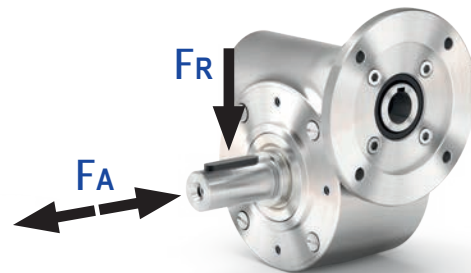
## Radial and axial loads

### Carichi radiali e assiali

## Output shaft

### Albero di uscita

$n_2$ [min <sup>-1</sup> ]	FA [lb]	FR [lb]
200	40	202
150	45	225
100	49	247
75	54	270
50	58	315
25	67	405
15	90	450

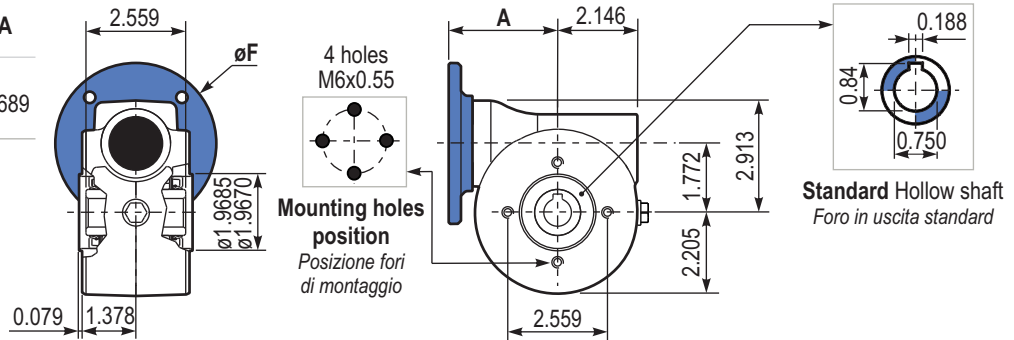


Tab. 2

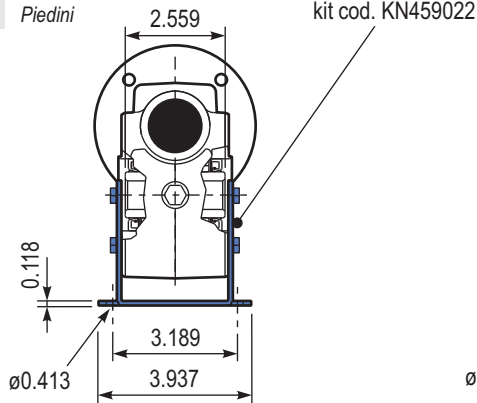
PN45**UNI**.. Basic gearbox  
*Riduttore base*

Gearbox weight  
*Peso riduttore* 9.04 lb

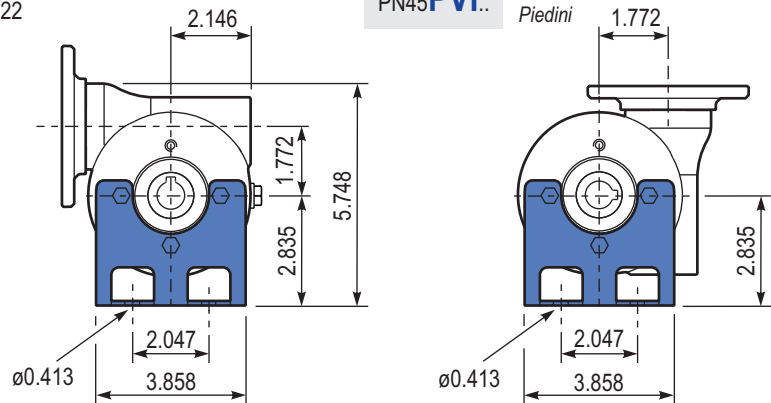
M. flanges	Kit code	øF	A
56C	KUI504041	6.5	3.689



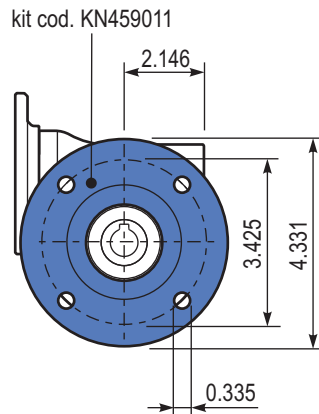
PN45**PAI**.. Feet  
*Piedini*



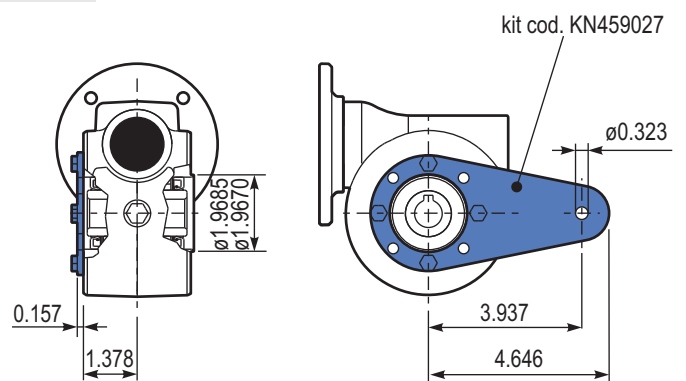
PN45**PVI**.. Feet  
*Piedini*



PN45**FLL**.. Output flange  
*Flangia uscita*



PN45**BRI**.. Reaction arm  
*Braccio di reazione*



PN45..**SIB** Single output shaft  
*Albero semplice in uscita*

