



Input speed (n_1) = 1750 min⁻¹

Output speed n_2 [min ⁻¹]	Ratio i	Motor power P_{1M} [HP]	Output torque M_{2M} [lb in]	Service factor $f.s$	Nominal power P_{1R} [HP]	Nominal torque M_{2R} [lb in]	Available NEMA motor flanges		Dynamic efficiency RD	Tooth module  [mm]	Ratio code 
							-W 56C	- -			
250.0	7	2	413	1.2	2.34	478			82	2.5	01
175.0	10	1.5	432	1.2	1.84	522			80	2.4	02
125.0	14	1	398	1.4	1.46	575			79	2.6	03
97.2	18	1	486	1.1	1.09	522			75	2.0	04
67.3	26	0.75	485	1.2	0.87	558			69	2.7	05
58.3	30	0.75	567	1.1	0.82	611			70	2.5	12
48.6	36	0.5	447	1.4	0.69	611			69	2.1	06
40.7	43	0.5	511	1.1	0.57	575			66	1.8	07
35.0	50	0.5	558	1.0	0.51	558			62	1.5	13
29.2	60	0.33	414	1.3	0.42	522			58	1.3	08
25.7	68	0.33	461	1.1	0.35	487			57	1.2	09
21.9	80	0.25	389	1.2	0.31	478			54	1.0	10
17.5	100	0.25	450	1.0	0.24	434			50	0.8	11

The nominal power should be reduced if the ambient temperature is $\geq 30^\circ\text{C}$, or when a cooler gearbox is required.

Diminuire la potenza nominale in caso di temperatura ambiente $\geq 30^\circ\text{C}$ o se è richiesta una bassa temperatura di utilizzo del riduttore.

-  **Motor flanges available**
Flange motore disponibili
-  **B) Supplied with reduction bushing**
Fornito con bussola di riduzione
- B) Available on request without reduction bushing**
Disponibile a richiesta senza bussola di riduzione
-  **C) Motor flange holes position**
Posizione fori flangia motore

Lubrication

Lubrificazione

Unit N50 is supplied with synthetic oil to assure long life lubrication.
Food grade oil is available on request.

See Table 1 for lubrication and recommended quantity.

See Table 2 for possible radial and axial loads on the gearbox.

Il riduttore tipo N50 viene fornito con olio sintetico e lubrificazione tipo "long life".

Disponibile a richiesta olio alimentare.

Vedi Tabella 1 per oli e quantità consigliati.

Vedi Tabella 2 per i carichi radiali e assiali applicabili al riduttore.

Oil quantity for all positions: 6.34 oz. Quantità olio per tutte le posizioni: 0.34 oz.	Shell Omala S4 WE 320	Eni Telium VSF 320
---	--------------------------	-----------------------

Tab. 1

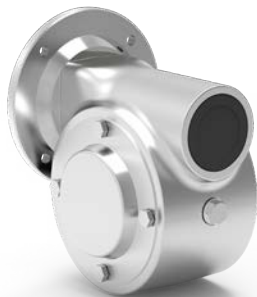
Suggested

Suggerito

Stainless steel protection cap (on request).

Coperchio di protezione in acciaio inox a richiesta.

Kit cod. KN500209



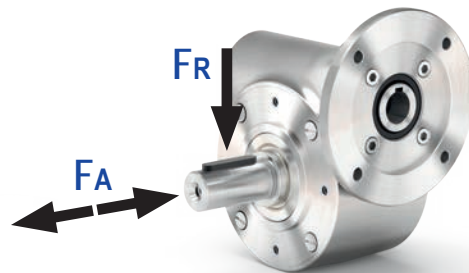
Radial and axial loads

Carichi radiali e assiali

Output shaft

Albero di uscita

n_2 [min ⁻¹]	F_A [lb]	F_R [lb]
200	54	270
150	63	315
100	67	337
75	76	382
50	85	427
25	108	562
15	126	629

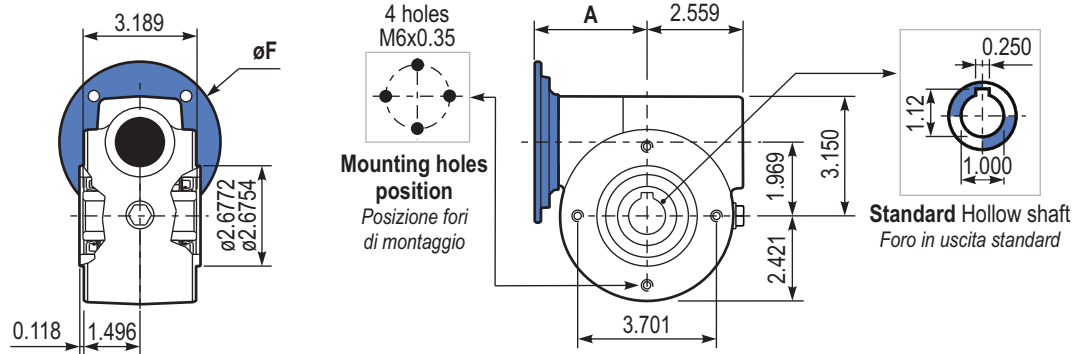


Tab. 2

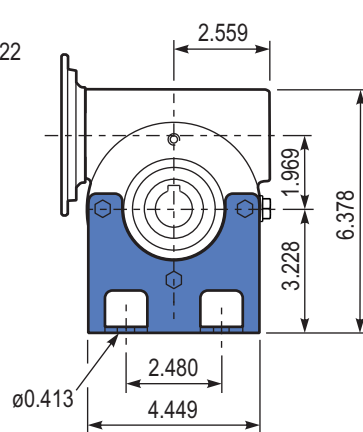
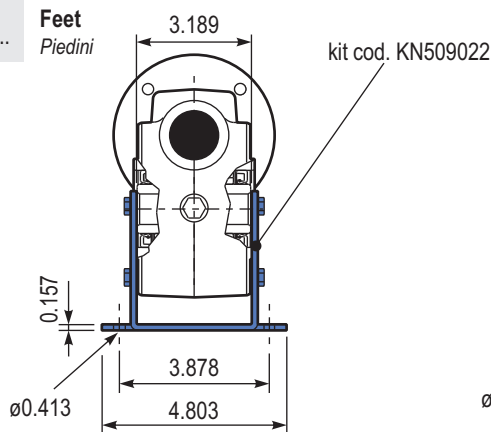
PN50**UNI**.. Basic gearbox
Riduttore base

M. flanges	Kit code	øF	A
56C	KUI504041	6.5	3.866

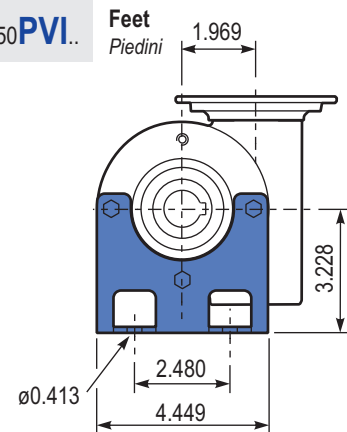
Gearbox weight
Peso riduttore 11.68 lb



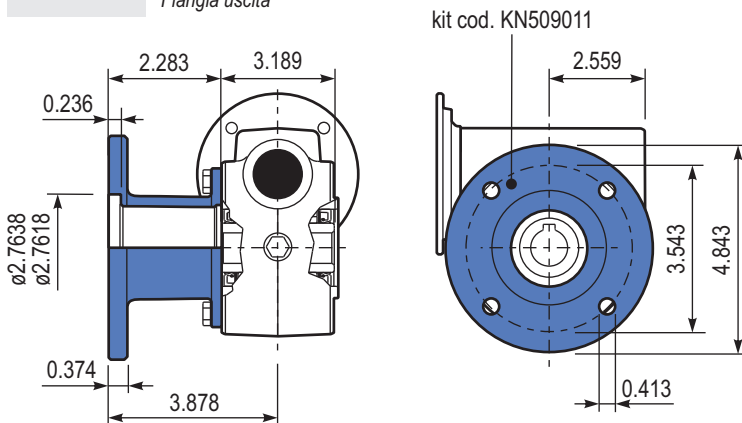
PN50**PAI**.. Feet
Piedini



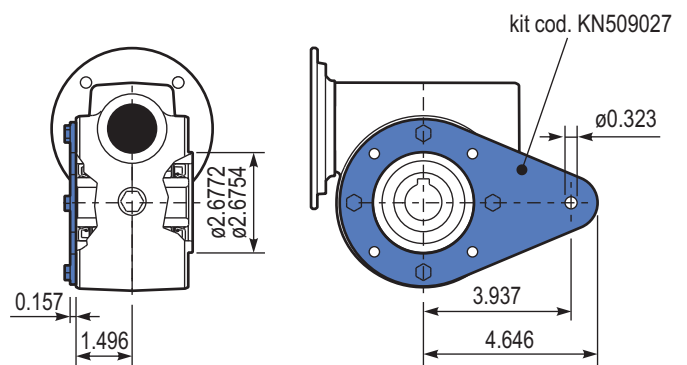
PN50**PVI**.. Feet
Piedini



PN50**FLL**.. Output flange
Flangia uscita



PN50**BRI**.. Reaction arm
Braccio di reazione



PN50..**SID** Single output shaft
Albero semplice in uscita

