

Input speed (n_1) = 1750 min⁻¹

Output speed n_2 [min ⁻¹]	Ratio i	Motor power P_{1M} [HP]	Output torque M_{2M} [lb in]	Service factor $f.s$	Nominal power P_{1R} [HP]	Nominal torque M_{2R} [lb in]	Available NEMA motor flanges		Dynamic efficiency RD	Tooth module $[mm]$	Ratio code
							-W 56C	-X 143-5TC			
250.0	7	2	419	2.5	5.10	1053	B		83	3.1	01
175.0	10	2	583	1.9	3.93	1133	B		81	3.1	02
116.7	15	2	854	1.4	2.75	1159	B		79	3.1	03
92.1	19	2	1068	1.1	2.20	1159	B		78	2.6	04
72.9	24	1.5	972	1.2	1.87	1195	B		75	2.0	05
58.3	30	1.5	1199	1.0	1.56	1230	B		74	3.2	06
48.6	36	1	882	1.4	1.42	1239	B		68	2.7	07
43.8	40	1	951	1.2	1.25	1177	B		66	2.5	13
38.9	45	1	1070	1.1	1.08	1142	B		66	2.1	08
29.2	60	0.75	1005	1.1	0.83	1097	B		62	1.6	12
26.1	67	0.5	724	1.4	0.73	1044	B		60	1.5	09
21.9	80	0.5	821	1.2	0.62	1000	B		57	1.3	10
18.6	94	0.5	880	1.1	0.58	1000	B		52	1.1	11

The nominal power should be reduced if the ambient temperature is $\geq 30^\circ C$, or when a cooler gearbox is required.

Diminuire la potenza nominale in caso di temperatura ambiente $\geq 30^\circ C$ o se è richiesta una bassa temperatura di utilizzo del riduttore.

Motor flanges available
Flange motore disponibili



B) Supplied with reduction bushing
Fornito con bussola di riduzione



B) Available on request without reduction bushing
Disponibile a richiesta senza bussola di riduzione



C) Motor flange holes position
Posizione fori flangia motore

Lubrication

Lubrificazione

Unit N45 is supplied with synthetic oil to assure long life lubrication.

Food grade oil is available on request.

See Table 1 for lubrication and recommended quantity.

See Table 2 for possible radial and axial loads on the gearbox.

Il riduttore tipo N45 viene fornito con olio sintetico e lubrificazione tipo "long life".

Disponibile a richiesta olio alimentare.

Vedi Tabella 1 per oli e quantità consigliati.

Vedi Tabella 2 per i carichi radiali e assiali applicabili al riduttore.

**Oil quantity for
all positions:
15.85 oz.**

Quantità olio per tutte
le posizioni: 15.85 oz.

Shell
Omala S4 WE 320

Eni
Telium VSF 320

Tab. 1

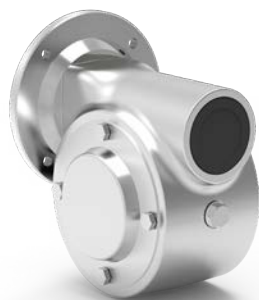
Suggested

Suggerito

Stainless steel protection cap
(on request).

Coperchio di protezione in
acciaio inox a richiesta.

Kit cod. KN630209



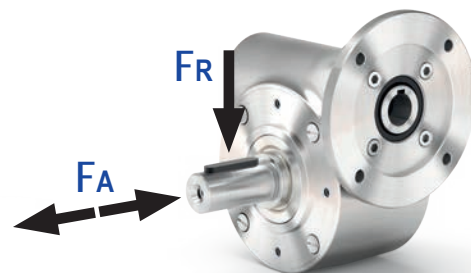
Radial and axial loads

Carichi radiali e assiali

Output shaft

Albero di uscita

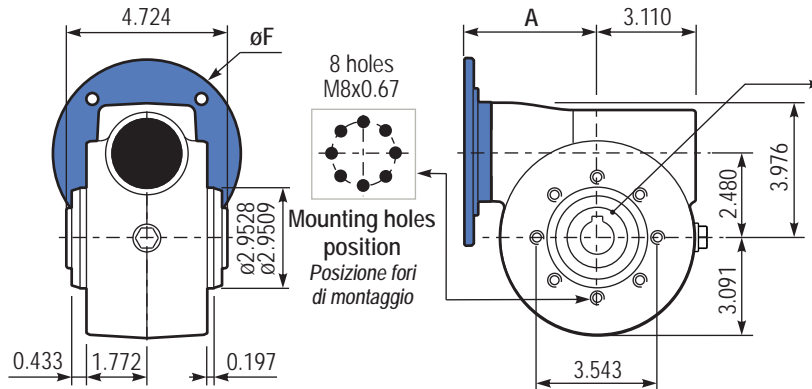
n_2 [min ⁻¹]	F_A [lb]	F_R [lb]
200	81	404.5
150	90	450
100	103.5	517
75	112.5	562
50	135	674.5
25	157	854
15	180	899



Tab. 2

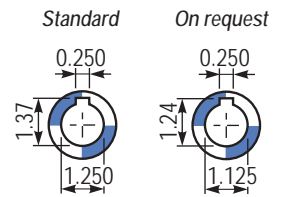
PN63 **UNI..** Basic gearbox
Riduttore base

M. flanges	Kit code	øF	A
56C	KUI634041	6.50	4.390
143/5 TC	KUI634041	6.50	4.390

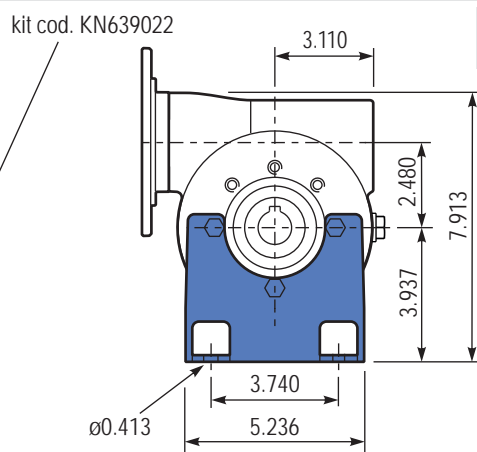
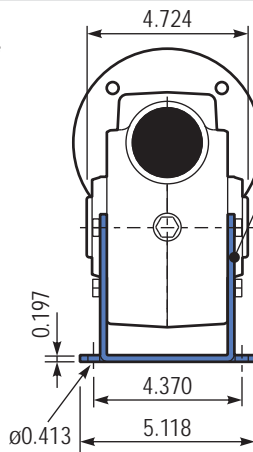


Gearbox weight
Peso riduttore 22.05 lb

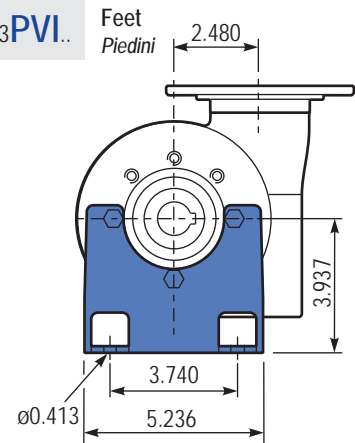
Hollow shaft *Foro in uscita*



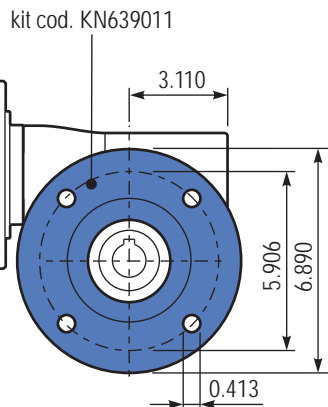
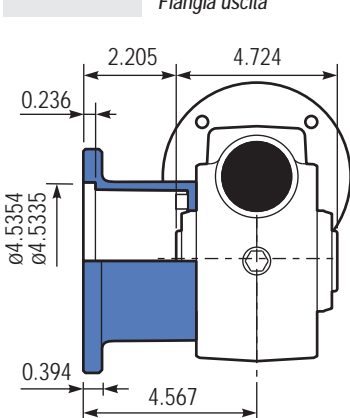
PN63 **PAI..** Feet
Piedini



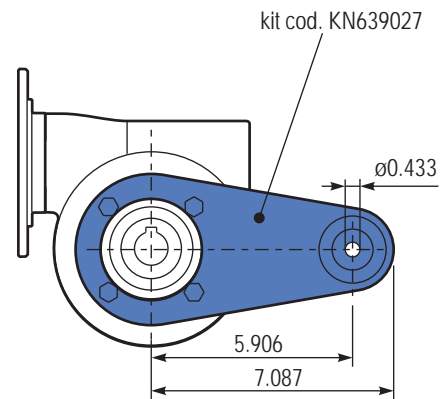
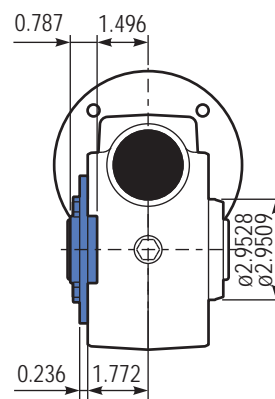
PN63 **PVI..** Feet
Piedini



PN63 **FLL..** Output flange
Flangia uscita



PN63 **BRI..** Reaction arm
Braccio di reazione



PN63 **SIF** Single output shaft
Albero semplice in uscita

