

Input speed (n_1) = 1750 min⁻¹

Output speed n_2 [min ⁻¹]	Ratio i	Motor power P_{1M} [HP]	Output torque M_{2M} [lb in]	Service factor f.s	Nominal power P_{1R} [HP]	Nominal torque M_{2R} [lb in]	Available NEMA motor flanges			Dynamic efficiency RD	Tooth module [mm]	Ratio code
							-W 56C	-X 143-5TC	-Y 182-4TC			
250.0	7	5	1109	2.0	9.90	2168	B	B		88	4.23	01
175.0	10	5	1441	1.7	8.40	2390	B	B		80	4.2	02
125.0	14	5	1967	1.3	6.61	2567	B	B		78	4.5	03
87.5	20	3	1707	1.5	4.41	2478	B	B		79	3.4	04
79.5	22	3	1854	1.3	4.06	2478	B	B		78	3.1	05
62.5	28	3	2269	1.3	3.91	2921	B	B		75	4.7	06
46.1	38	3	2915	1.0	2.95	2832	B	B		71	3.5	07
38.0	46	2	2253	1.2	2.47	2744	B	B		68	3.1	08
33.7	52	2	2472	1.0	1.99	2434	B	B		66	2.7	09
26.1	67	1.5	2353	1.0	1.57	2434	B	B		65	2.1	10
23.6	74	1.5	2319	1.0	1.48	2257	B	B		58	1.9	11
18.2	96	1	1833	1.1	1.13	2036	B	B		53	1.5	12

The nominal power should be reduced if the ambient temperature is $\geq 30^\circ\text{C}$, or when a cooler gearbox is required.

Diminuire la potenza nominale in caso di temperatura ambiente $\geq 30^\circ\text{C}$ o se è richiesta una bassa temperatura di utilizzo del riduttore.

Motor flanges available
Flange motore disponibili



B) Supplied with reduction bushing
Fornito con bussola di riduzione



B) Available on request without reduction bushing
Disponibile a richiesta senza bussola di riduzione



C) Motor flange holes position
Posizione fori flangia motore

Lubrication

Lubrificazione

Unit N85 is supplied with synthetic oil to assure long life lubrication.

Food grade oil is available on request.

See Table 1 for lubrication and recommended quantity.

See Table 2 for possible radial and axial loads on the gearbox.

I riduttore tipo N85 viene fornito con olio sintetico e lubrificazione tipo "long life".

Disponibile a richiesta olio alimentare.

Vedi Tabella 1 per oli e quantità consigliati.

Vedi Tabella 2 per i carichi radiali e assiali applicabili al riduttore.

**Oil quantity for
all positions:**

35.21 oz.

Quantità olio per tutte
le posizioni: 35.21 oz

Shell

Omala S4 WE 320

Eni

Telium VSF 320

Tab. 1

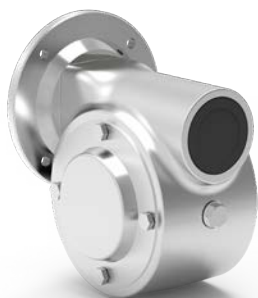
Suggested

Suggerito

Stainless steel protection cap
(on request).

Coperchio di protezione in
acciaio inox a richiesta.

Kit cod. KN850209



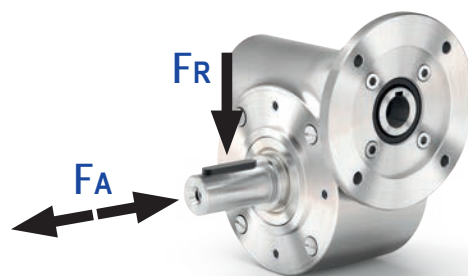
Radial and axial loads

Carichi radiali e assiali

Output shaft

Albero di uscita

n_2 [min ⁻¹]	FA [lb]	FR [lb]
200	112	562
150	130	652
100	135	674
75	157	787
50	180	899
25	225	1124
15	261	1304

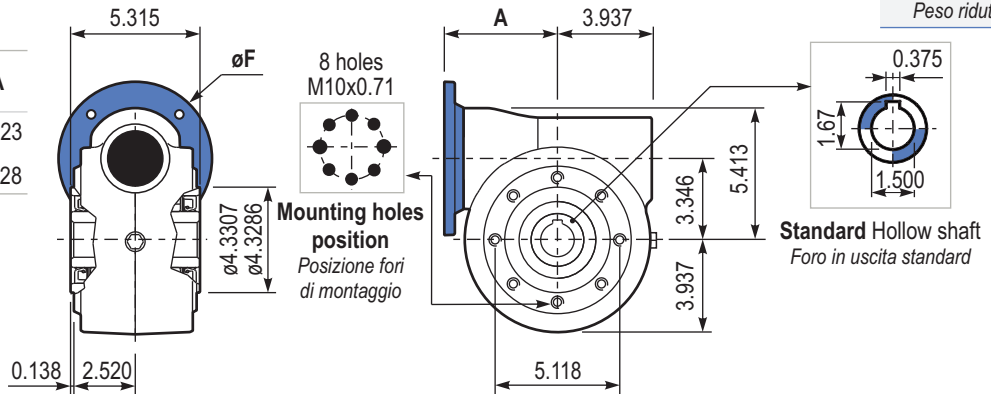


Tab. 2

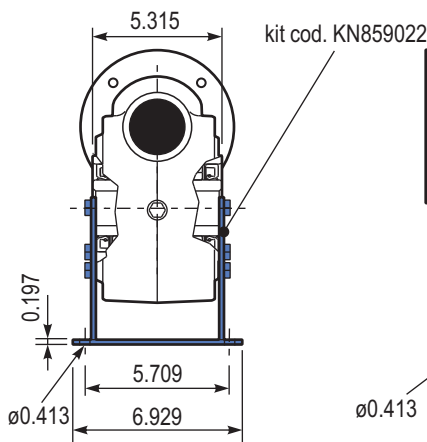
PN85 **UNI..** Basic gearbox
Riduttore base

Gearbox weight
Peso riduttore 46.30 lb

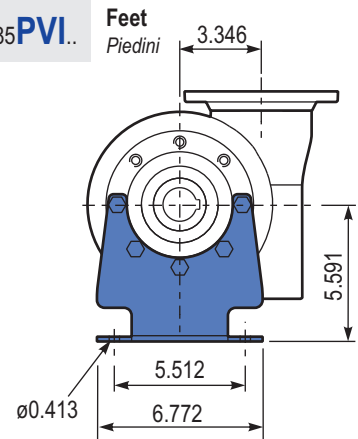
M. flanges	Kit code	øF	A
56C-143/5TC	KUI854041	6.50	4.823
182/4TC	KUI854042	8.88	5.528



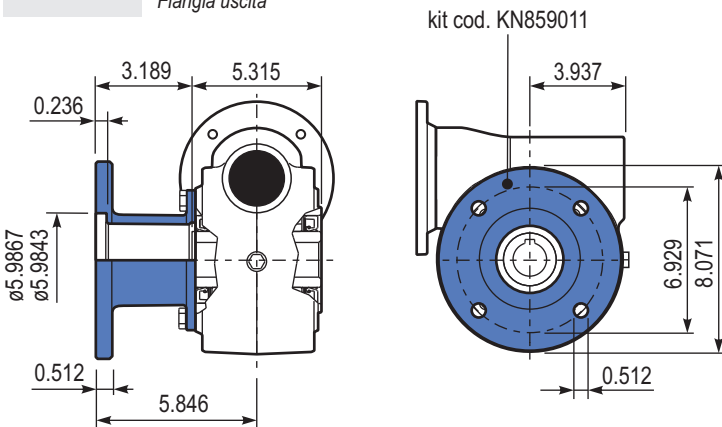
PN85 **PAI..** Feet
Piedini



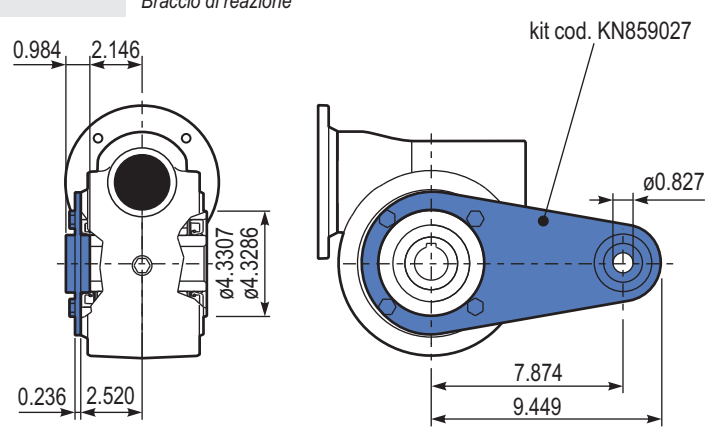
PN85 **PVI..** Feet
Piedini



PN85 **FLL..** Output flange
Flangia uscita



PN85 **BRI..** Reaction arm
Braccio di reazione



PN85 **SIH** Single output shaft
Albero semplice in uscita

